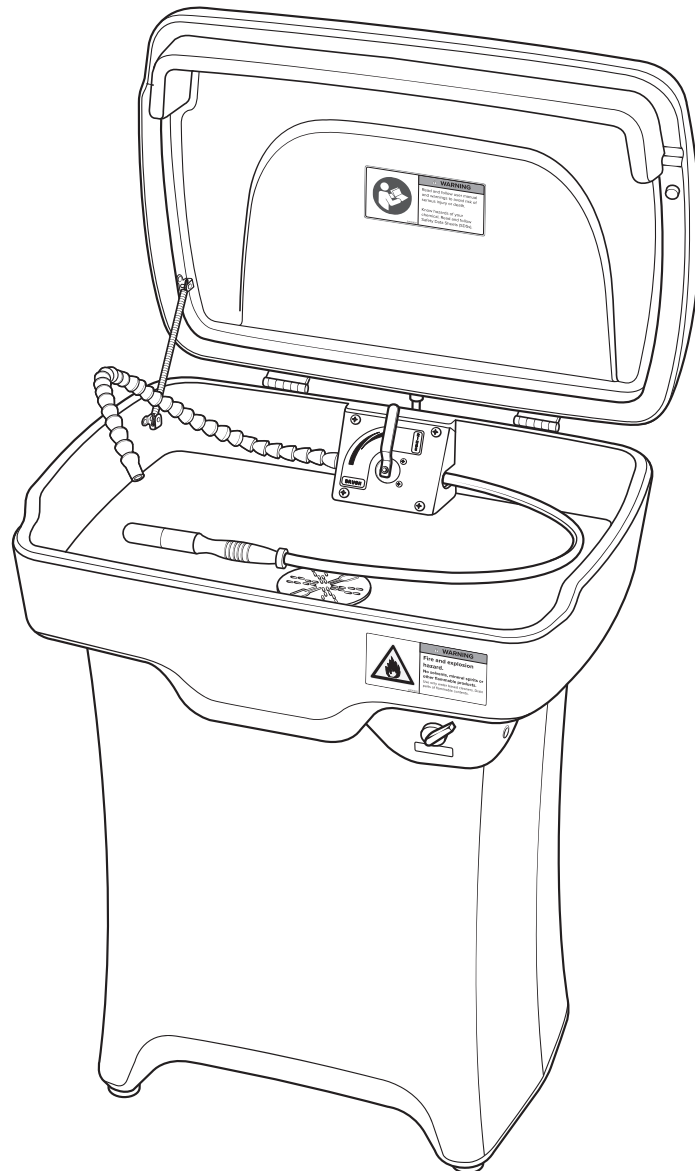


Aqueous Parts Washer

User Manual

APW20



READ ALL INSTRUCTIONS BEFORE USING, OR SERVICING, THIS EQUIPMENT. KEEP THIS MANUAL IN A LOCATION THAT IS READILY AVAILABLE TO USERS AND SERVICE TECHNICIANS.

English (Original Instructions)

Contents

- 1 Safety3
 - Safety Labels..... 4
- 2 Product Overview5
- 3 Installation.....6
 - System Requirements 6
 - System Specifications 6
 - Assembling the Equipment7
- 4 Use9
- 5 Cleaning & Maintenance..... 11
- 6 Troubleshooting 12
- 7 Parts 13

1 Safety

WARNING



Failure to read all the instructions before operating the unit may result in personal injury or death from the improper use of the chemical solution. Anyone handling, operating or using the unit must read, and understand, the instructions in the manual. The buyer assumes all responsibility for safety and proper use in accordance with the instructions.



Using, or servicing, the unit without proper protective clothing, gloves, and eye wear may result in serious injury such as burns, rashes, eye, throat or lung damage and death. Always wear protective clothing, gloves, and eye wear when using, or servicing, the unit. Protect eyes, skin, and lungs against drifting spray.



Using, or mixing, any amount of non-aqueous solvents (i.e.: alcohol, gasoline, petroleum or chlorinated solutions) when using this equipment may cause explosions, fire, skin burns, fatigue, dizziness, serious injury or death. Never add, mix, or use, non-aqueous solvents to the aqueous (water) based solution when using or servicing this equipment. Always follow these instructions:



- Only use non-flammable / non-combustible aqueous based solutions with this equipment.
- Drain any non-aqueous solvent from parts before cleaning.
- Read, and follow, all chemical safety precautions and handling instructions provided by the solution manufacturer and the Safety Data Sheet (SDS) associated with the solution being used before using the equipment.



Splashing, spills, puncture of the sink or base may result in standing fluid and cause people to slip and fall resulting in serious injury or death. Immediately cordon off the hazardous area to human and vehicular traffic and clean up any standing fluid around the equipment. Always follow the guidelines of the solution manufacturer and the Safety Data Sheet (SDS) associated with the solution when disposing the material used to clean the standing fluid.



Movement of the equipment due to collision or repositioning may cause the equipment to tip-over and result in serious injury or death. Install the equipment in a low traffic area away from vehicular traffic lanes. Always ensure the equipment is level and stable before using or servicing the equipment.

Overloading or imbalanced weight distribution of parts in the Sink may cause the equipment to tip-over and result in serious injury or death. Always keep the total weight of the parts in the sink under 400 pounds. Always arrange the parts so their weight is evenly distributed.

⚠ CAUTION



Improper use, or accidental movement, of this equipment during the part cleaning process, equipment cleaning or servicing may result in aqueous based solution making contact with the skin, eyes and soaking a person's clothing. This may cause irritation to a body part and should be addressed immediately. If this occurs, always follow safety guidelines of the solution manufacturer and the Safety Data Sheet (SDS) associated with the solution.

Fumes and odors from the cleaning process may cause irritation to a person's eyes and breathing. Always locate this equipment in well ventilated area.

NOTICE

Servicing, or modification, of this unit with parts not listed in this manual may cause the unit to operate improperly. Do not use unauthorized parts when servicing the unit.

Use of an air lubricator before the unit may result in diminished performance and damage to the unit. Do not use an air lubricator before the unit.

Moisture in the air lines will damage the pump and diminish the pumps life. The air must be filtered, clean, dry and free of moisture. If needed, install an air dryer before the unit.

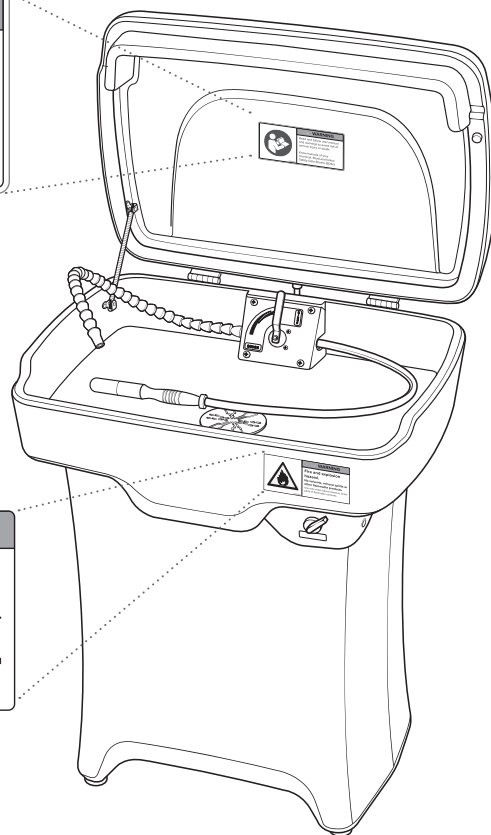
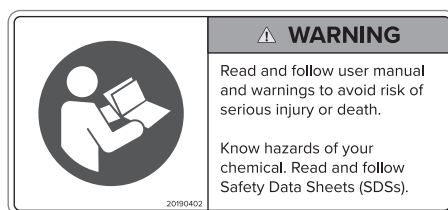
PROTECT THE ENVIRONMENT



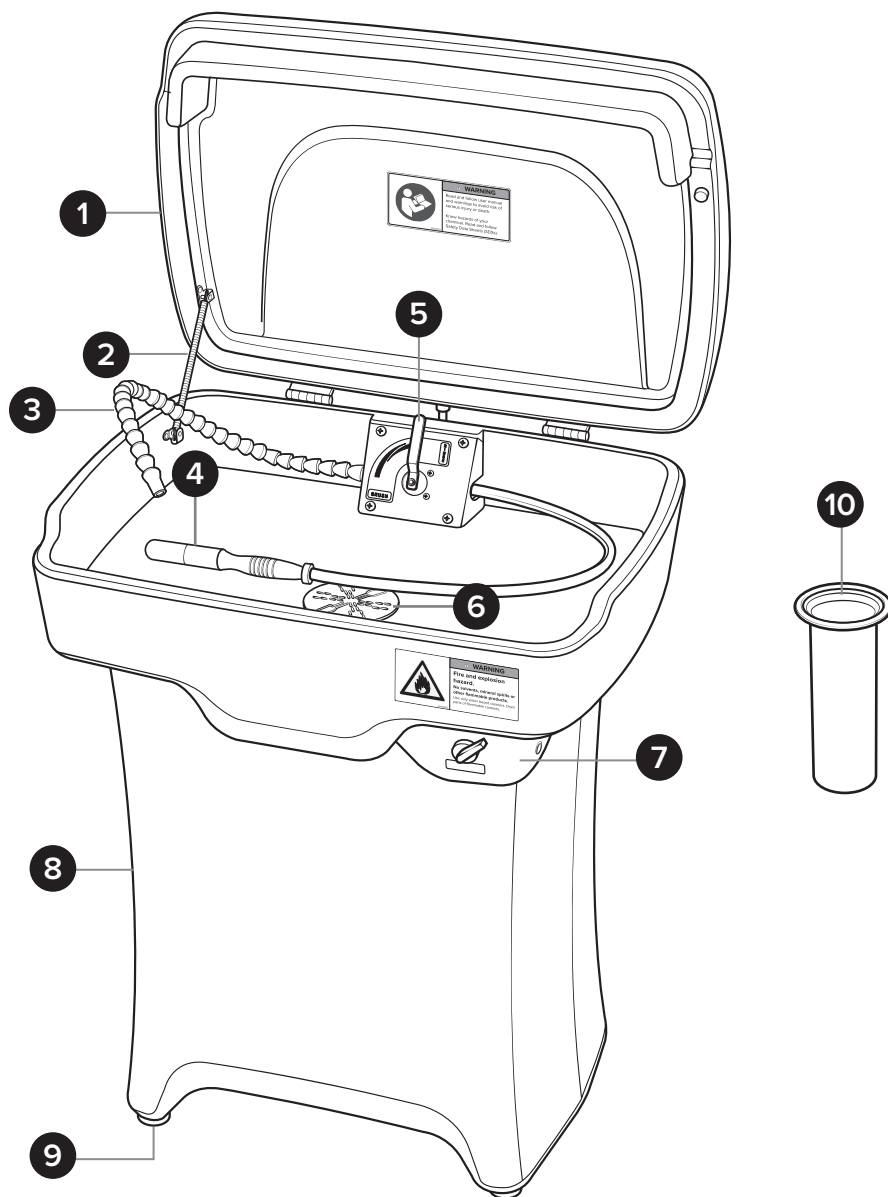
Please dispose of packaging materials, old machine components, and hazardous fluids in an environmentally safe way according to local waste disposal regulations

Safety Labels

The location of safety labels are shown here. **Important!** Immediately replace missing or damaged safety labels.



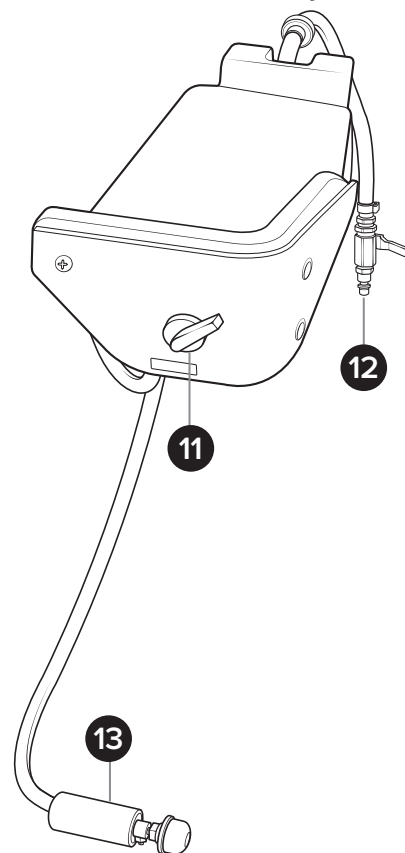
2 Product Overview



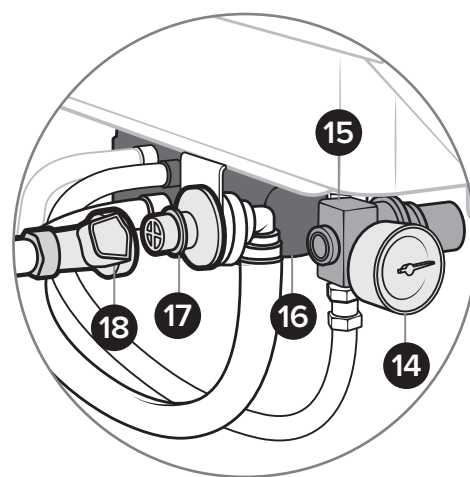
1. Lid
2. Lid Spring
3. Flexible Rinse Line
4. Flow-Thru Brush
5. Rinse/Brush Handle
6. Drain Grate
7. Control Box Assembly
8. Base
9. Mounting Feet (x4)

10. Filter Bag
11. Air On/Off Switch
12. Air Quick Connect Valve
13. Suction Line
14. Air Pressure Gage
15. Regulator
16. Pump
17. Supply Hose Quick Connect
18. Sink Hose Quick Connect

Control Box Assembly



Components inside the Control Box



3 Installation

WARNING



Locating the equipment in high traffic areas or vehicular traffic lanes may result in the equipment being punctured or tipped over causing spills, standing fluid and cause people to slip and fall, serious injury or death. Install the equipment in a low traffic area away from vehicular traffic lanes.

System requirements

Incoming compressed air requirements	25-80 psi (1.7-5.6 bar) with 1.5-3 cfm (42.5-85 l/min)
Recommended operating air pressure	25 psi (1.7 bar)
Chemical compatibility	For use with aqueous solutions only. Chemical products used with this equipment must be formulated for this type of application and compatible with unit materials and pump seals. For more information on chemical compatibility, consult the manufacturer or SDS for your product or contact our customer service department.

System specifications

Power type	Compressed Air
Chemical pickup type	Draws from pre-mixed solution
Number of products unit can draw from	One product
Suction line length/diameter	3.5 ft. (1 m) hose with 1/2 in. (12.7 mm) inside diameter
Fluid capacity	20 gallons (75.7 liters)
Output lines	FLOW-THRU BRUSH: 3 ft. (0.9 m) hose with 3/8 in. (9.5 mm) inside diameter and flow-thru brush FLEXIBLE RINSE LINE: 2 ft. (0.6 m) modular hose with 1/2 in. (12.7 mm) inside diameter and 1/2 in. (12.7 mm) round nozzle
Flow rate	110 gph (416.4 lph) at 25 psi (1.7 bar)
Pump seals	Santoprene
Filter bag	250 micron rating, size 4
Weight capacity	Up to 400 lbs. (181.4 kg)
Overall exterior dimensions	33 x 25 x 65 in. (83.8 x 63.5 x 165.1 cm) with lid open
Sink interior dimensions	30 x 18 x 5 in. (76.2 x 45.7 x 12.7 cm)
Work surface height	36 in. (91.4 cm)
Foot type	Four adjustable leveling feet
Certifications	Conforms to UL Std. 1204, Certified to CSA Std. 22.2# 68

Assembling the Equipment

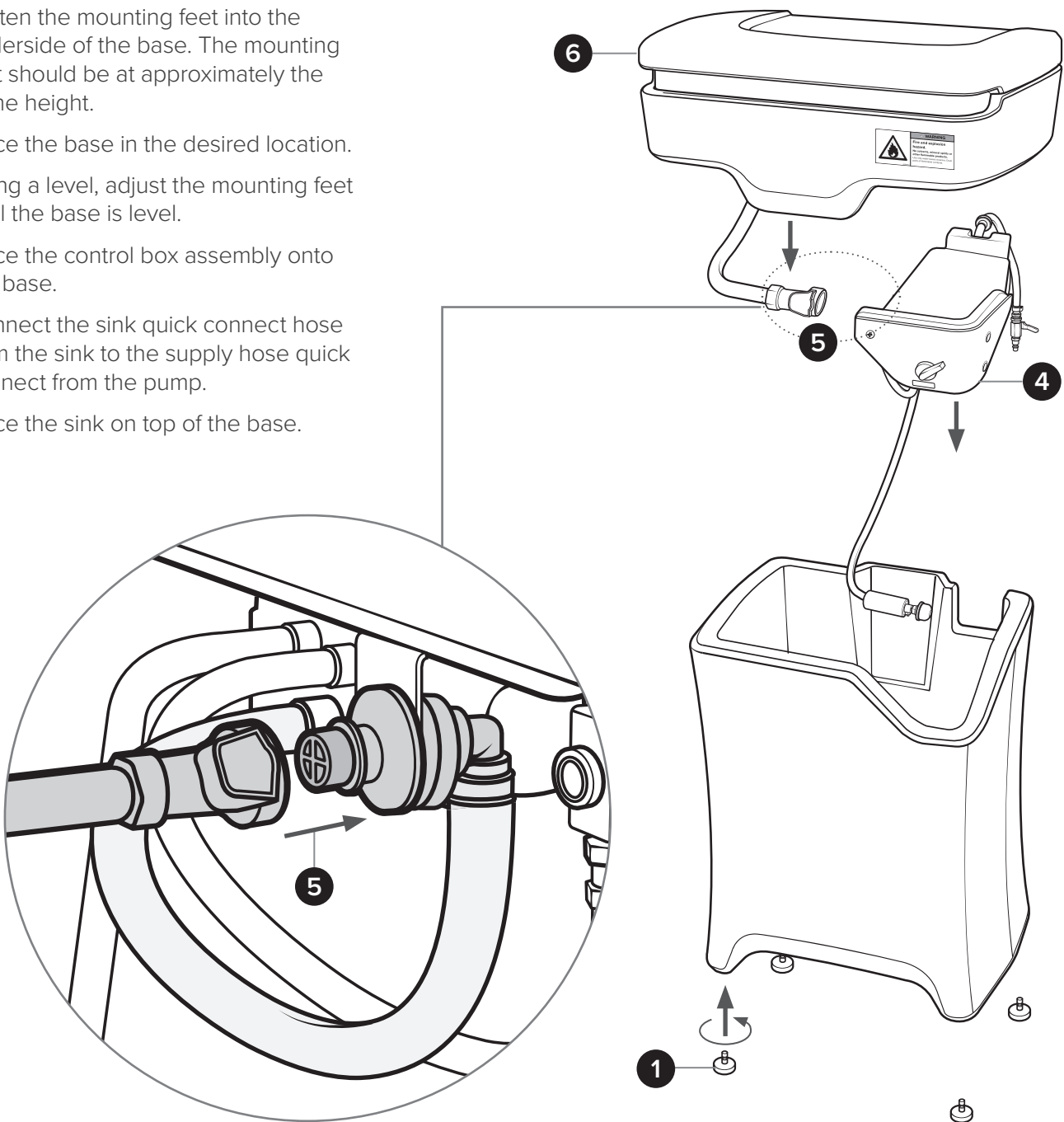
NOTICE

Operating the equipment with the protective packing material on the Control Box Assembly may cause damage to the equipment. Remove the protective packing material on the Control Box Assembly and properly dispose before using the equipment.

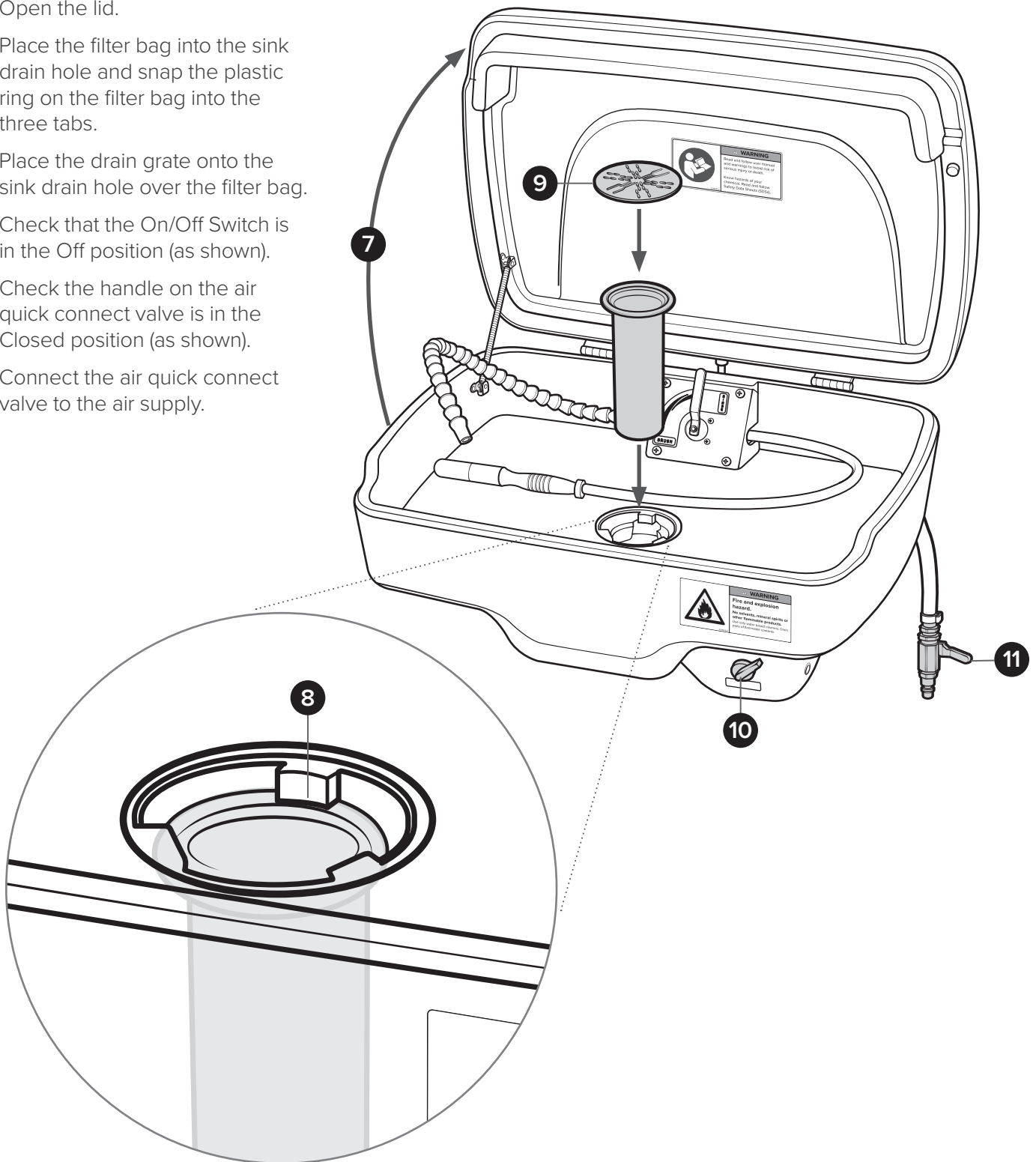
The equipment is shipped in two boxes, check that all the parts are included and undamaged. One box has the complete Sink assembly (including Lid) and the other has the Base and Control Box Assembly. The Drain Grate, Filter Bag and Mounting Feet are in a parts bag. **Important!** Locate the equipment in an area that has a hard, flat, level surface and proper ventilation.

Follow these steps to install the equipment:

1. Fasten the mounting feet into the underside of the base. The mounting feet should be at approximately the same height.
2. Place the base in the desired location.
3. Using a level, adjust the mounting feet until the base is level.
4. Place the control box assembly onto the base.
5. Connect the sink quick connect hose from the sink to the supply hose quick connect from the pump.
6. Place the sink on top of the base.



7. Open the lid.
8. Place the filter bag into the sink drain hole and snap the plastic ring on the filter bag into the three tabs.
9. Place the drain grate onto the sink drain hole over the filter bag.
10. Check that the On/Off Switch is in the Off position (as shown).
11. Check the handle on the air quick connect valve is in the Closed position (as shown).
12. Connect the air quick connect valve to the air supply.



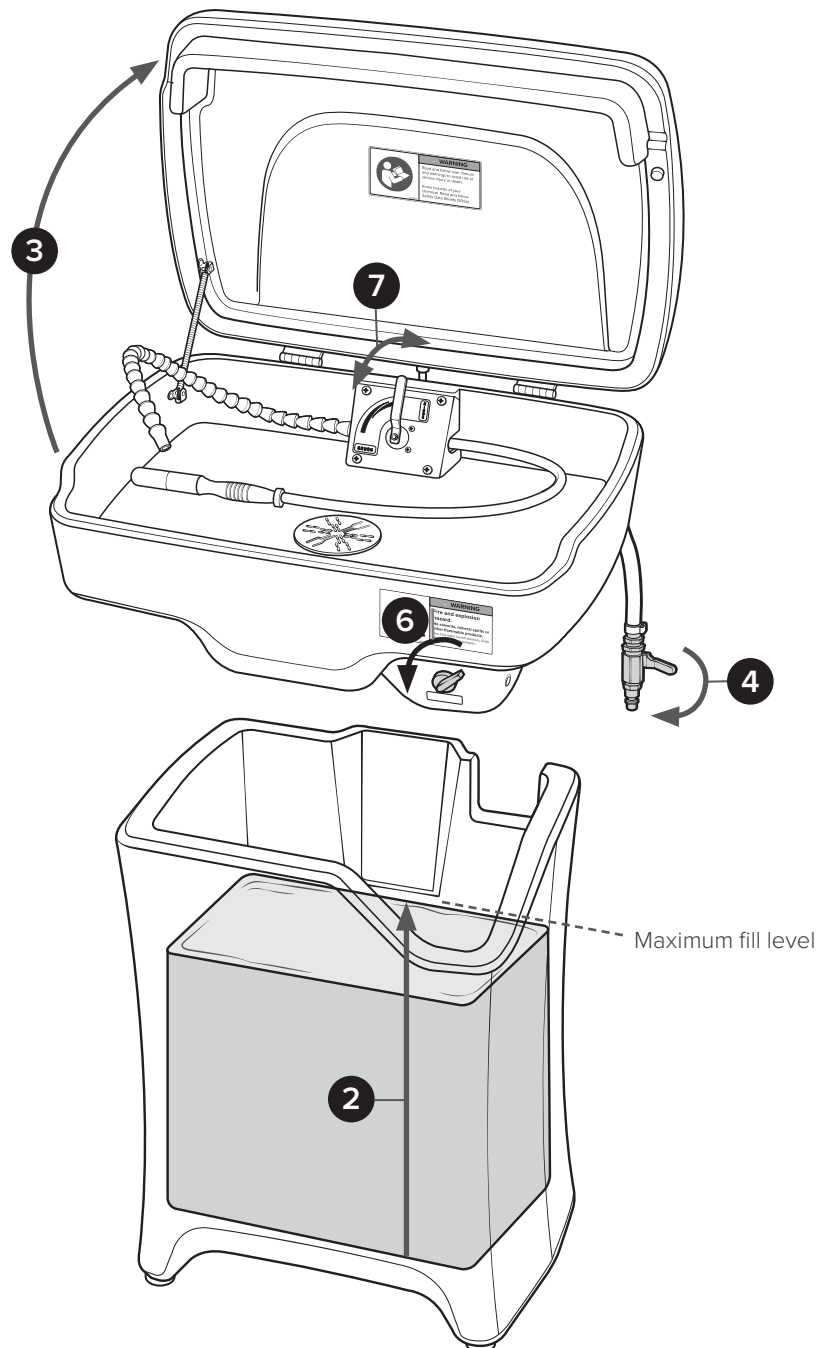
4 Use

Important! Only aqueous (water) based solutions shall be used with this equipment. It is beyond the scope of this manual to describe every aqueous based solutions available. It is the user's responsibility to ensure the use of proper solutions with this equipment.

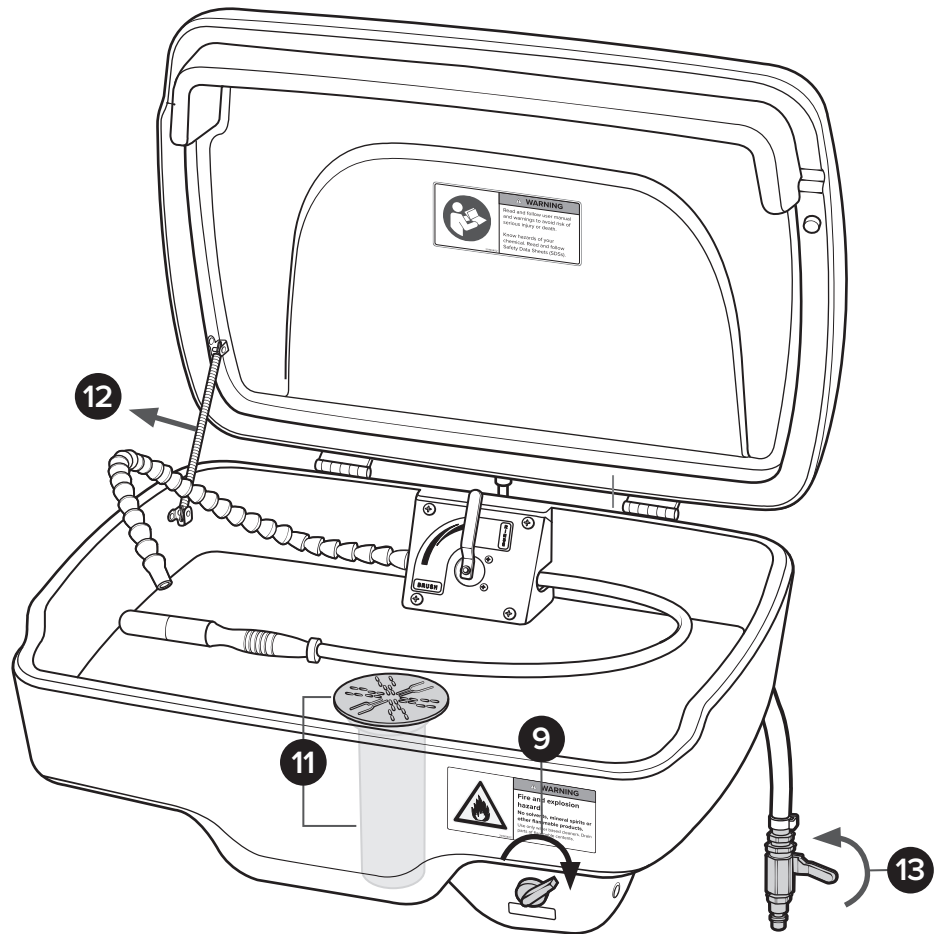
Chemicals used with this equipment must be formulated for this type of application and compatible with unit materials and pump seals. Always read, and follow, all chemical safety precautions and handling instructions provided by the solution manufacturer and the Safety Data Sheet (SDS) associated with the solution being used before using the equipment. Never use any amount of non-aqueous solvent with this equipment.

Follow these steps to use the equipment:

1. Lift the sink up from the base.
2. Fill the base with the aqueous based solution. Important! Do not fill higher than the maximum fill line. The equipment has a maximum capacity of 20 gallons (75.7 liters).
3. After the base is filled, place the control box assembly and sink back onto the base and open the lid.
4. Move the handle on the air quick connect valve to the Open position.
5. Place the parts in the sink.
Important! Do not overfill the sink. Maximum weight of the part(s) should not exceed 400 lbs.
6. Turn the On/Off Switch to the On position.
7. Move the rinse/brush handle towards the Rinse or Brush Hose. **Note:** The in-line valve can control the flow through the Rinse Hose. Turning the in-line valve fully to the right while the rinse/brush handle is in the rinse position will shut off the flow completely.
8. Clean the parts. Move the handle to the center to use both tools simultaneously.



9. Turn the air pressure On/Off Switch to the Off position.
10. Remove the parts and repeat steps 4 - 8 with additional parts.
11. Monitor the drain grate and filter bag for accumulated solid waste. Monitor the solution quality. Conduct maintenance if needed (see Section 5: Cleaning & Maintenance for more information).
12. Tap the lid spring towards the front of the equipment and close the lid.
13. Move the handle on the air quick connect valve to the Closed position.



5 Cleaning & Maintenance

WARNING



Using, or servicing, the unit without proper protective clothing, gloves, and eye wear may result in serious injury such as burns, rashes, eye, throat or lung damage and death. Always wear protective clothing, gloves, and eye wear when using, or servicing, the unit. Protect eyes, skin, and lungs against drifting spray.



Splashing, spills, puncture of the sink or base may result in standing fluid and cause people to slip and fall, or cause electric shock and electrocution if a person makes contact with a live electrical circuit, resulting in serious injury or death. Immediately cordon off the hazardous area to human and vehicular traffic and clean up any standing fluid around the equipment. Always follow the guidelines of the solution manufacturer and the Safety Data Sheet (SDS) associated with the solution when disposing the material used to clean the standing fluid.

Important! Dispose of the solution properly. Always follow local, state and federal regulations and laws when disposing hazardous materials. Consult with the local environmental management agency for additional guidance.

Cleaning and maintenance intervals will vary based on usage and soil levels, users should reference chemical manufacturer recommendations on how frequently they need to change out the cleaning solution.

Changing the Filter Bag

Follow these steps to change the filter bag:

1. Wipe down the sink interior and rinse any debris into the drain.
2. Remove the sink drain grate.
3. Remove the filter bag by pulling it up and out of the Sink.
4. Fit a clean filter bag by pushing the ring of the filter into the retaining tabs of the sink drain.
Note: The plastic ring on the filter bag must snap into the three tabs on the sink drain hole when refitted.
5. Put the drain grate back in place.

Changing the Cleaning Solution

Follow these steps to change the cleaning solution:

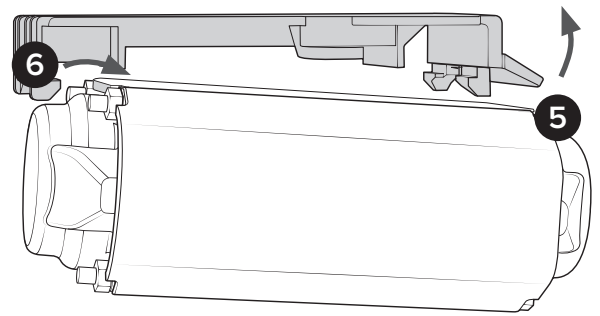
1. Position the flexible rinse line over the edge of the sink and into a suitable container.
2. Move the rinse/brush handle to the rinse side and drain as much solution as possible.
3. To completely drain the solution:
 - a. Lift up on the right side of the sink to access the quick release button on the hose connected to fluid supply connector on the control box assembly.
 - b. Undo the connection by pressing the quick release button.

- c. Lift the sink off and set aside.
- d. Remove the control box assembly and set it aside.
- e. Use a fluid evacuator to remove the remaining solution.
- f. Wipe down the base and remove collected sediment.
- g. Refill with clean solution.
- h. Place the control box assembly on the base.
- i. Connect the hose from the sink to the control box assembly.
- j. Place the sink on the base.
- k. Reconnect the air supply.

Replacing the Pump

Follow these steps if the pump needs to be replaced:

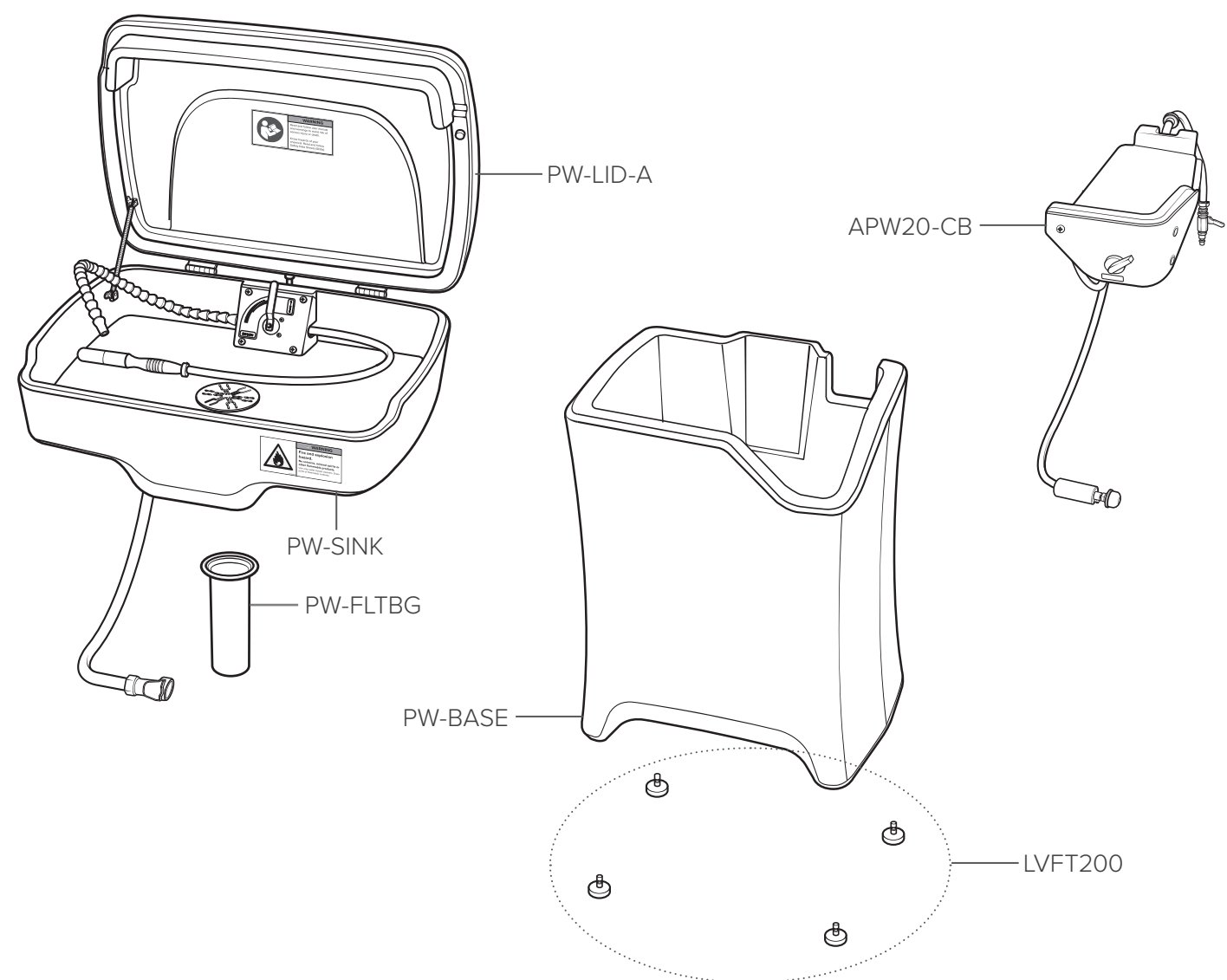
1. Turn the On/Off Switch to the Off position.
2. Move the handle on the air quick connect valve to the Closed position.
3. Lift the sink and disconnect the sink quick connect hose from the sink to the supply hose quick connect from the pump.
4. Disconnect the remaining hoses from the pump and remove the control box assembly.
5. Hold the pump and lift the locking tab up.
6. Move the Pump forward and release it from the mounting plate.
7. Reverse steps 1 - 6 to place the pump back into the control box assembly.



6 Troubleshooting

Issue	Solution
Solution doesn't flow through the Flexible Rinse Line or Flow-Thru Brush	<ul style="list-style-type: none"> • Check the hoses between the Sink and Control Box Assembly are connected. Reconnect if necessary. • Check the hoses between the Sink and Control Box Assembly are not pinched or damaged. Repair or replace if necessary. • Check the pump is functioning. Repair or replace if necessary.
Solution doesn't drain.	Check the Drain Grate and Filter Bag for sediment buildup or blockage. Clean or replace if necessary.

7 Parts



Item number	Description
PW-LID-A	Includes Lid, Spring, Hinges
PW-SINK	Includes Sink
PW-BASE	Includes Base
LVFT200	Leveling Feet
PW-FLTBG	Filter Bag
APW20-CB	Air Control Box

