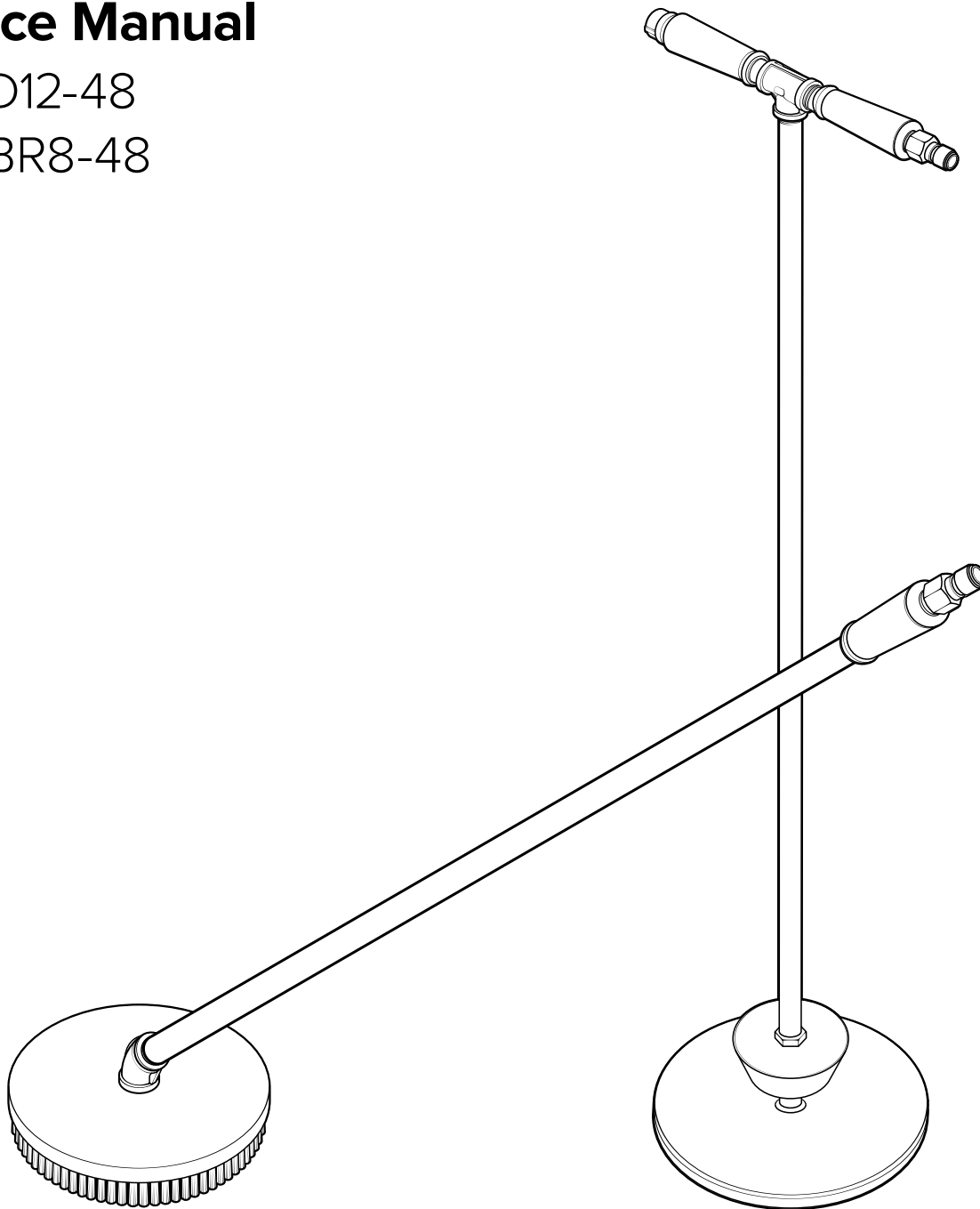


Drain Foaming Attachment

Service Manual

DFA-D12-48

DFA-BR8-48



READ ALL INSTRUCTIONS BEFORE USING OR
SERVICING THIS UNIT. KEEP THIS MANUAL IN A
LOCATION THAT IS READILY AVAILABLE TO USERS
AND SERVICE TECHNICIANS.

English (Original Instructions)



Scan this code for
service manual



Safety

WARNING

PEOPLE OR OBJECTS CAN BE HURT OR DAMAGED IF THIS UNIT IS NOT USED CORRECTLY!



Failure to read all the instructions before operating the unit may result in personal injury or death from the improper use of the chemical solution. Anyone handling, operating or using the unit must read, and understand, the instructions in the manual. The buyer assumes all responsibility for safety and proper use in accordance with the instructions.



Using, or servicing, the unit without proper protective clothing, gloves, and eye wear may result in serious injury such as burns, rashes, eye, throat or lung damage and death. Always wear protective clothing, gloves, and eye wear when using, or servicing, the unit. Protect eyes, skin, and lungs against drifting spray.



Chemical solutions may pose a health risk and death if they contact the skin or eyes, are inhaled or swallowed. Always read, and follow, all chemical safety precautions and handling instructions provided by the chemical manufacturer and the Safety Data Sheet (SDS) associated with the chemical solution being used before using the unit.



Pressure within the equipment may cause an unexpected release of the chemical solution and cause serious injury such as burns, rashes, eye damage, throat or lung damage and death. Always depressurize and clean the unit after each use. Never leave the unit unattended while pressurized.

Using the unit with fluid temperatures above 100°F (37.8°C) may result in scalding, burns, serious injury or death. DO NOT use a solution with a temperature above 100°F (37.8°C).

Operating the unit when damaged or leaking may result in exposure to chemical solutions, serious injury or death. Never use the unit if it is damaged or leaking.

Never point discharge wand at yourself, another person, or any object you do not want covered in chemical.

Using incoming air pressure exceeding 100 psi (6.9 bar) may result in pressure buildup, explosion, serious injury or death. DO NOT exceed 100 psi (6.9 bar) incoming air pressure when operating the unit.



Use of hydrocarbons and flammable products may result in explosions, fire and serious injury or death. Never use hydrocarbons or flammable products with the unit.



Mixing an alkaline with an acid may result in a chemical reaction. Overheating of the mixture may cause it to splatter caustic compounds or release hazardous fumes, gas and vapors. Always flush the unit with fresh water thoroughly when switching from an alkaline to an acid or an acid to an alkaline.

NOTICE

Servicing, or modification, of this unit with parts not listed in this manual may cause the unit to operate improperly. Do not use unauthorized parts when servicing the unit.

Use of an air lubricator before the unit may result in diminished performance and damage to the unit. Do not use an air lubricator before the unit.

Moisture in the air lines may damage the pump and diminish the units life. The air must be filtered, clean, dry and free of moisture. If needed, install an air dryer before the unit.

PROTECT THE ENVIRONMENT



Please dispose of packaging materials, old machine components, and hazardous fluids in an environmentally safe way according to local waste disposal regulations.

Service Guide

WARNING

Performing any maintenance with the unit pressurized, and connected to the air supply may result in serious injury or death. Always ensure that the unit has been depressurized, and disconnected from the air supply before conducting any maintenance. Servicing or modifying this unit with parts not listed in this manual may cause the unit to operate improperly. Do not use unauthorized parts when servicing the unit.

Maintaining Your Unit

To keep your unit operating properly, periodically perform the following maintenance procedures:

- Inspect all fittings, including quick-connect fittings, for wear and leaks.
- Check mixing material located inside the attachment handle for debris and wear. Clean and replace as needed.
- Examine the foam ring gasket for wear and replace as needed.

Servicing Your Unit

Most repairs on the unit can be performed with the following tools:

- Crescent wrench (2x)
- Thread seal tape

Disc Assembly

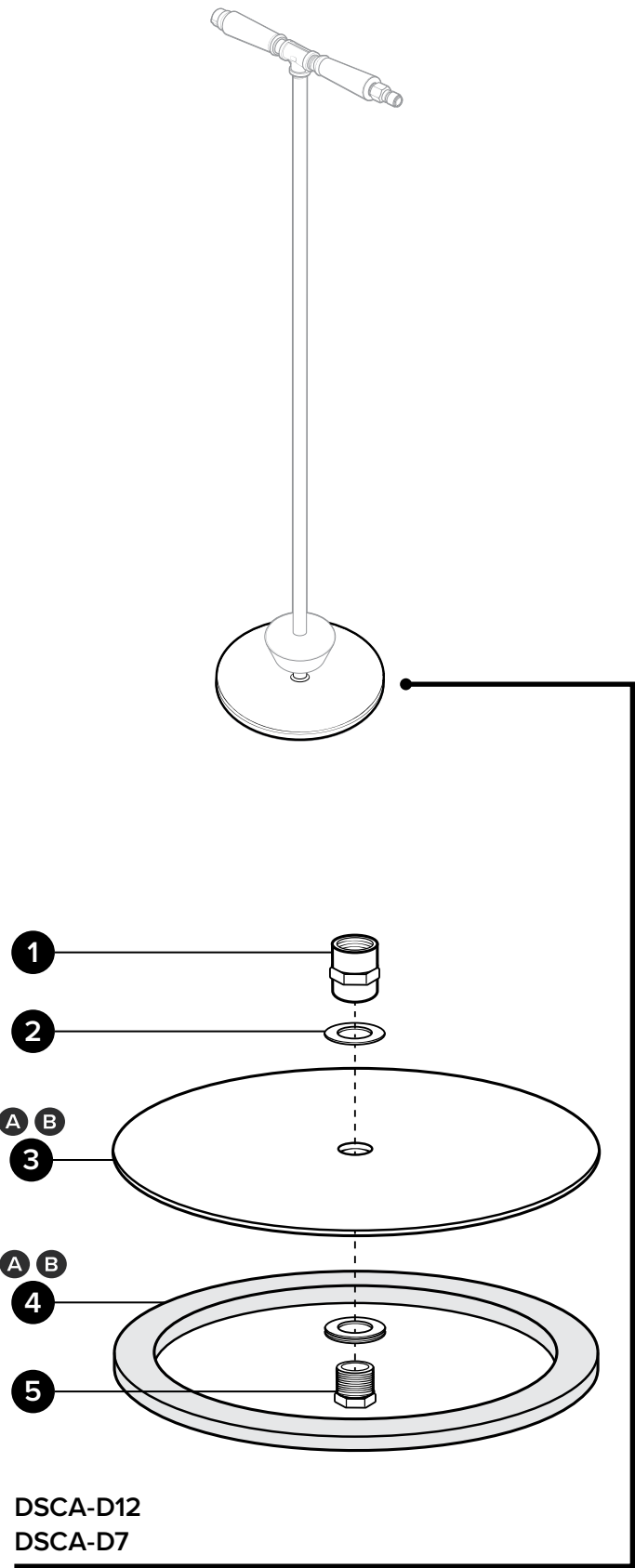
DSCA-D12:

Disc assembly - includes 12 in. diameter stainless disc, stainless steel bushing, coupler, foam ring, and washer

Additional disc assembly options:

DSCA-D7: 7 in. stainless disc assembly

| Item number | | Description |
|-------------|-------------|--|
| 1 | SC1212 | Stainless steel coupler ½ in. x ½ in. |
| 2 | FW12NPT | Flat washer for ½ in. NPT - stainless - 0.88 in. id x 1.5 in. od x 0.05 in. thk |
| 3 | A DSCSS-D12 | Disc - stainless steel - 12 in. dia |
| | B DSCSS-D7 | Disc - stainless steel - 7 in. dia |
| 4 | A ADHFM-D12 | Foam ring with adhesive back - EPDM - black - 12 in. dia x ½ in. thk - 1 in. wide ring |
| | B ADHFM-D7 | Foam ring with adhesive back - EPDM - black - 7 in. dia x ½ in. thk - 1 in. wide ring |
| 5 | HHSB1238 | Hex head stainless bushing ½ MPT x ¾ FPT |



Handle Assembly

HNDLA-DF-QC:

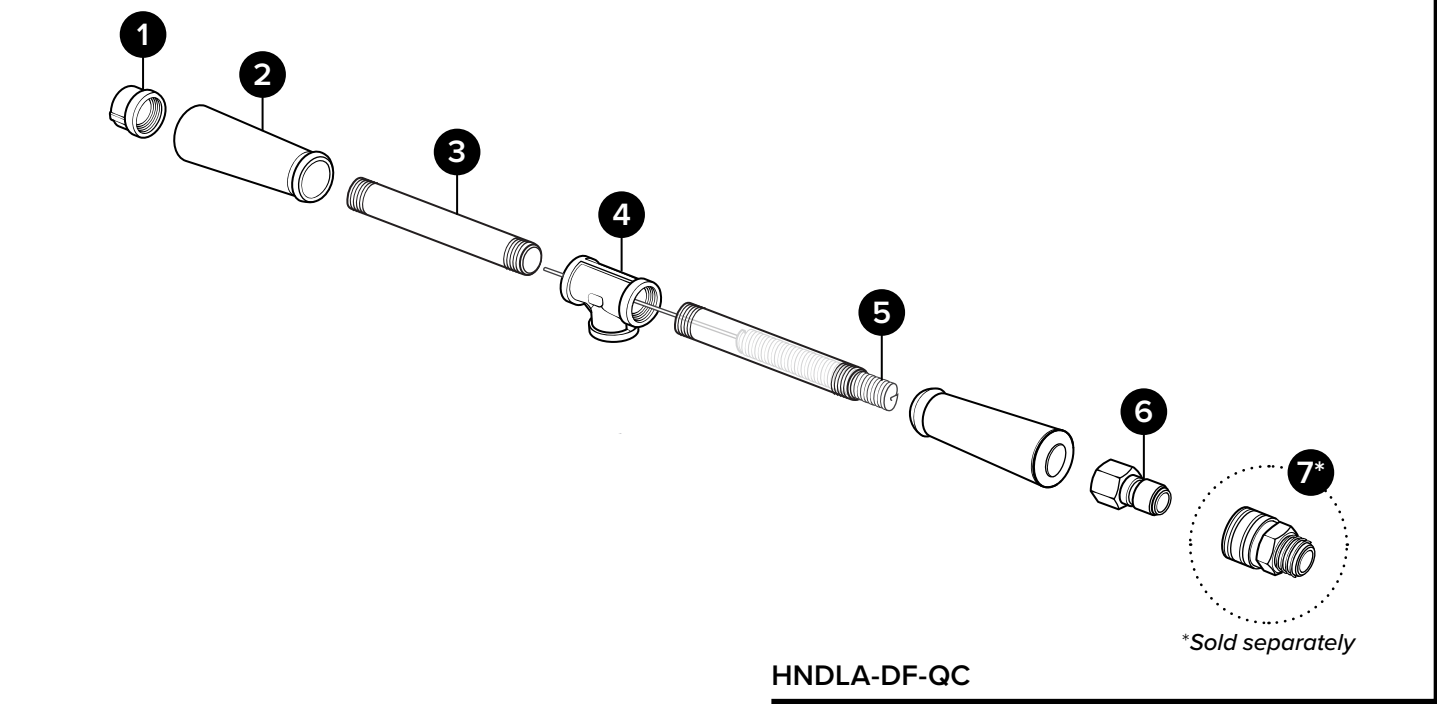
Handle assembly for drain foam - T-bar - includes quick connect fitting

| Item number | | Description |
|-------------|----------|--|
| 1 | SSCP12 | ½ FPT cap - stainless |
| 2 | HBG12-BK | Handle bar grip - for ½ in. NPT pipe - black flexible PVC - 4 ½ in. long - open on both ends |
| 3 | SSN126 | ½ in. NPT SCH40S pipe nipple - stainless - 6 in. long |
| 4 | SST12 | Stainless tee ½ FPT |
| 5 | MXSS587 | Mixing media - stainless - wire brush - ⅝ in. dia x 7 in. tall - 13 ½ in. overall length with stem |
| 6 | QCSS12PF | Stainless steel non check ½ in. quick connect plug - FPT |

Additional Components

Not included with assembly

| Item number | | Description |
|-------------|----------|---|
| 7 | QCSS12CM | Stainless steel non check ½ in. quick connect coupler - MPT |



Wand Assembly

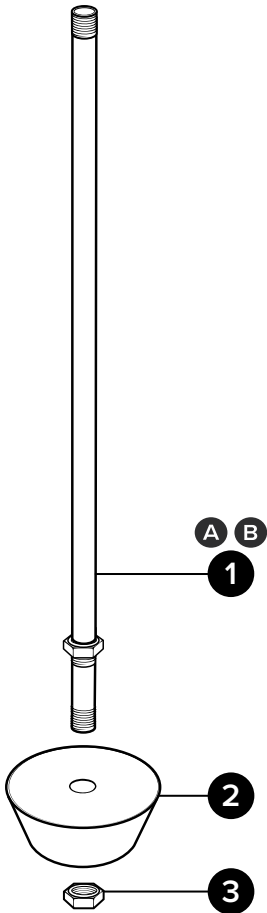
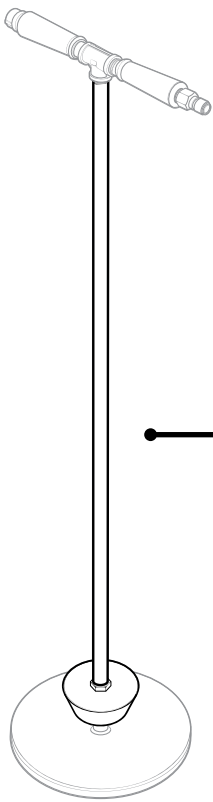
WA-DF-48:

Wand assembly - 48 in. tall with size 16 foot stop - for drain foam attachment

Additional wand assembly options:

WA-DF-36: 36 in. wand assembly with size 16 foot stop

| Item number | | Description |
|-------------|-------------|--|
| 1 | A SS1248DFA | ½ in. NPT SCH40S pipe nipple - polished stainless - 48 in. long - 3 in. NPSM DFA threads |
| | B SS1236DFA | ½ in. NPT SCH40S pipe nipple - polished stainless - 36 in. long - 3 in. NPSM DFA threads |
| 2 | STP16 | Drain stopper - size 16 - 3 ½ in. to 5 in. taper - black rubber - 2 in. long |
| 3 | SSTLN12 | ½ in. stainless locknut |



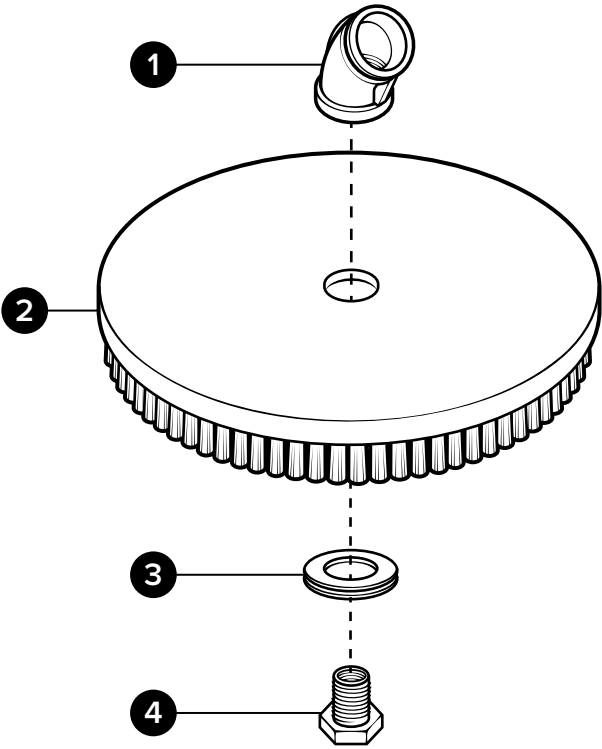
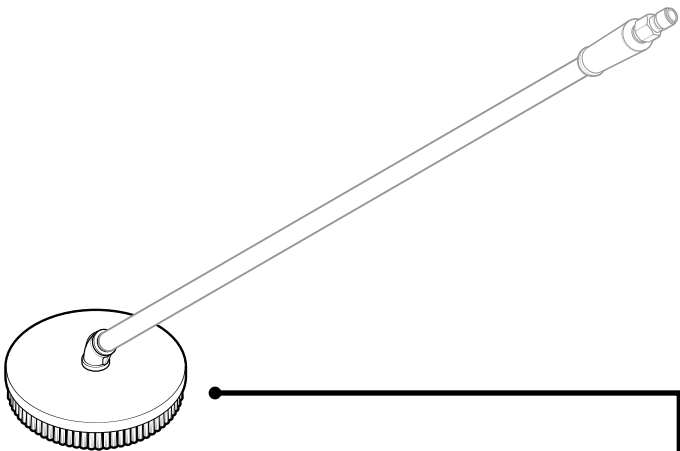
WA-DF-48
WA-DF-36

Disc Brush Assembly

DSCA-BR8-EL:

Disc assembly - includes 8 in. diameter brush, stainless steel bushing, 45 degree elbow, and washer

| Item number | | Description |
|-------------|----------|---|
| 1 | SEL12F45 | ½ FPT 45 degree elbow - stainless |
| 2 | BR-RND8 | Brush - round - 8 in. diameter - polypropylene with polypropylene bristles |
| 3 | FW12NPT | Flat washer for ½ in. NPT - stainless - 0.88 in. id x 1.5 in. od x 0.05 in. thk |
| 4 | HHSB1238 | Hex head stainless bushing ½ MPT x ⅜ FPT |



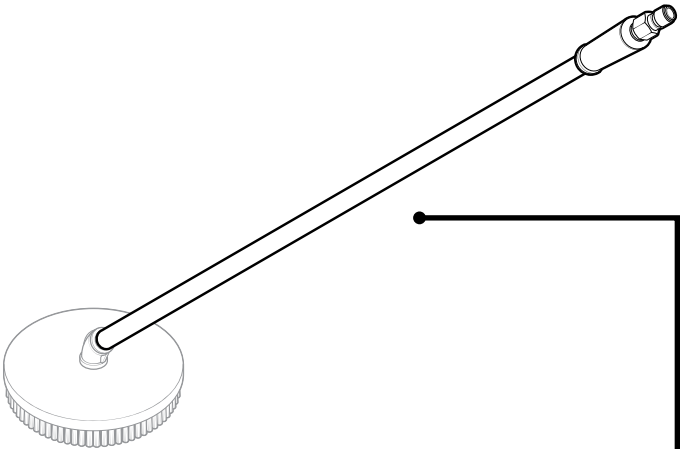
DSCA-BR8-EL

Handle Assembly

HNDLA-DF-BR-QC:

Handle assembly for drain foam brush attachment - includes quick connect fitting

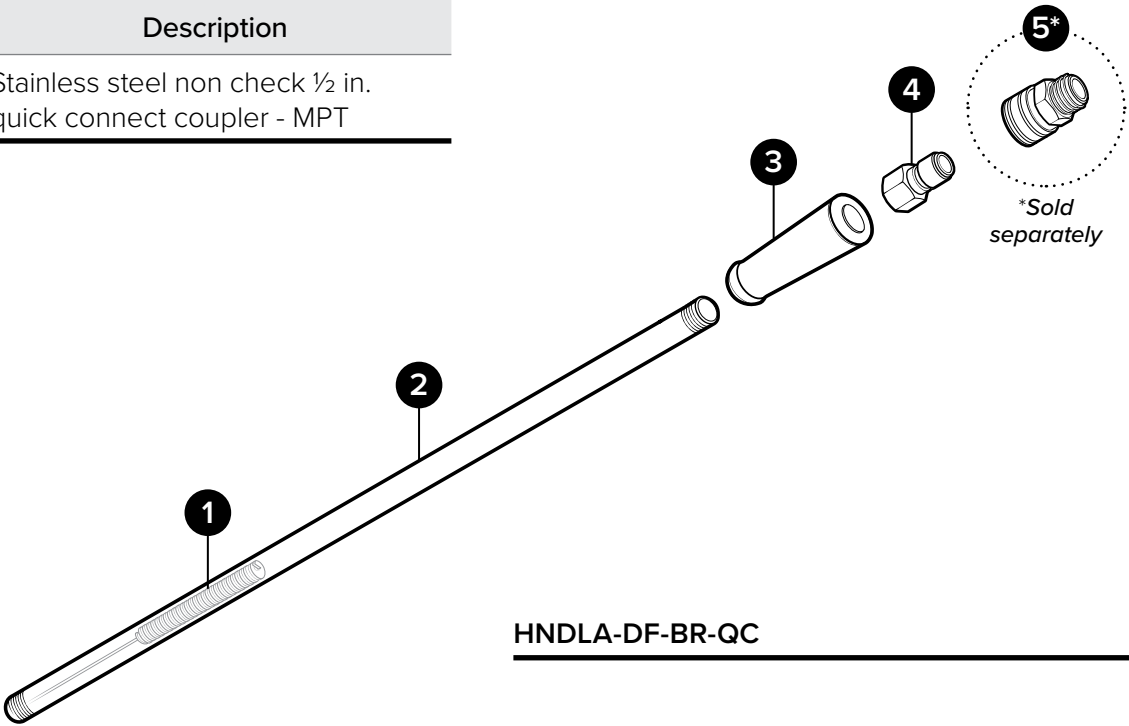
| Item number | | Description |
|-------------|----------|--|
| 1 | MXSS587 | Mixing media - stainless - wire brush - 5⁄8 in. dia x 7 in. tall - 13 ½ in. overall length with stem |
| 2 | SSN1248 | ½ in. NPT SCH40S pipe nipple - polished stainless - 48 in. long |
| 3 | HBG12-BK | Handle bar grip - for ½ in. NPT pipe - black flexible PVC - 4 ½ in. long - open on both ends |
| 4 | QCSS12PF | Stainless steel non check ½ in. quick connect plug - FPT |



Additional Components

Not included with assembly

| Item number | | Description |
|-------------|----------|---|
| 5 | QCSS12CM | Stainless steel non check ½ in. quick connect coupler - MPT |



HNDLA-DF-BR-QC