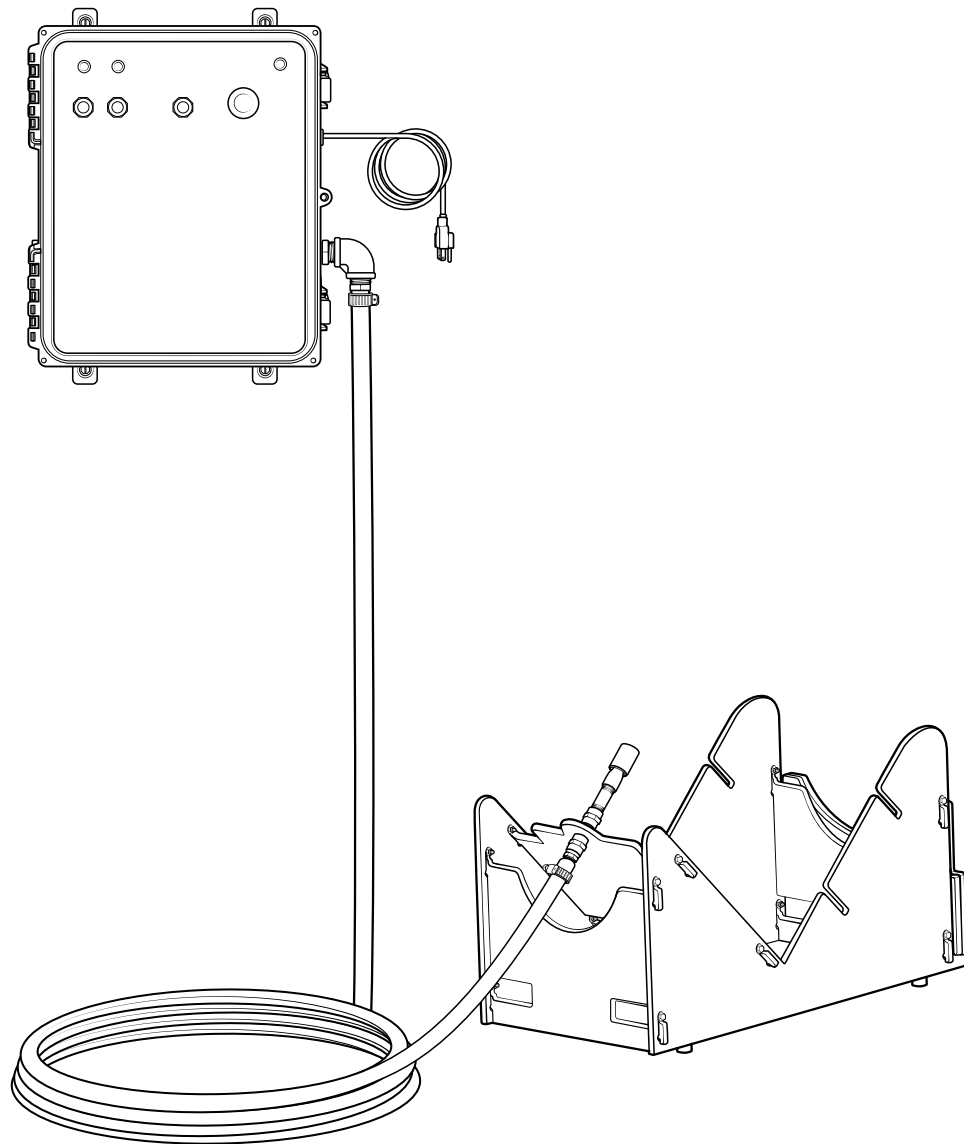


Drum Rinse System

Service Manual

DRS



READ ALL INSTRUCTIONS BEFORE USING OR
SERVICING THIS UNIT. KEEP THIS MANUAL IN A
LOCATION THAT IS READILY AVAILABLE TO USERS
AND SERVICE TECHNICIANS.

English (Original Instructions)



Scan this code for
service manual



Safety

WARNING

PEOPLE OR OBJECTS CAN BE HURT OR DAMAGED IF THIS UNIT IS NOT USED CORRECTLY!



Failure to read all the instructions before operating the unit may result in personal injury or death from the improper use or the chemical solution. Anyone handling, operating or using the unit must read and understand the instructions in the manual. The buyer assumes all responsibility for safety and proper use in accordance with the instructions.



Using or servicing the unit without appropriate personal protective equipment (PPE) may result in serious injury such as burns, rashes, eye, throat or lung damage and death. Always wear PPE as indicated in the Safety Data Sheet (SDS) when using or servicing the unit. Protect eyes, skin, and lungs against drifting spray.



Chemical solutions may pose a health risk and death if they contact the skin or eyes, are inhaled or swallowed. Always read and follow all chemical safety precautions and handling instructions provided by the chemical manufacturer and the SDS associated with the chemical solution before using the unit.



Pressure within the equipment may cause an unexpected release of the chemical solution and cause serious injury such as burns, rashes, eye damage, throat or lung damage and death. Always depressurize and clean the unit after each use. Never leave the unit unattended while pressurized.

Using the unit with fluid temperatures above 100°F (37.8°C) may result in scalding, burns, serious injury or death. Use extreme caution when handling a solution with a temperature above 100°F (37.8°C).

Operating the unit when damaged or leaking may result in exposure to chemical solutions, serious injury or death. Never use the unit if it is damaged or leaking.



Never point the discharge wand at yourself, another person, or any object you do not want covered in chemical.



Use of hydrocarbons and flammable products may result in explosions, fire and serious injury or death. Never use hydrocarbons or flammable products with the unit.



Mixing an alkaline with an acid may result in a chemical reaction. Overheating of the mixture may cause it to splatter caustic compounds or release hazardous fumes, gas and vapors. Always flush the unit with fresh water thoroughly when switching from an alkaline to an acid or an acid to an alkaline.

Touching damaged electrical cords may result in electrical shock, serious injury or death. Always inspect electrical cords and extension cords for damage before connecting the unit to power supply. DO NOT touch a damaged electrical cord, or extension cord, that is connected to power supply.

NOTICE

Servicing or modifying this unit with parts not listed in this manual may cause the unit to operate improperly. Do not use unauthorized parts when servicing the unit.



PROTECT THE ENVIRONMENT

Please dispose of packaging materials, old machine components, and hazardous fluids in an environmentally safe way according to local waste disposal regulations.

Service Guide

WARNING

Performing any maintenance with the unit pressurized, and/or connected to electrical power may result in serious injury or death. Always ensure that the unit has been depressurized, and disconnected from the electrical power before conducting any maintenance. Servicing or modifying this unit with parts not listed in this manual may cause the unit to operate improperly. Do not use unauthorized parts when servicing the unit.

Maintaining Your Unit

To keep your unit operating properly, periodically perform the following maintenance procedures:

- Inspect the spray nozzle for wear and leaks.
- Inspect all hoses for leaks or excessive wear.
- Make sure all hose clamps are in good condition and properly secured.

Servicing Your Unit

Most repairs on the unit can be performed with the following tools:

- Crescent wrench (2x)
- 2 mm flat head screwdriver
- Flat head screwdriver
- #2 Phillips head screwdriver
- Thread seal tape
- Hose cutters
- Knife

Troubleshooting Your Unit

If your unit is not operating properly, try using these troubleshooting tips:

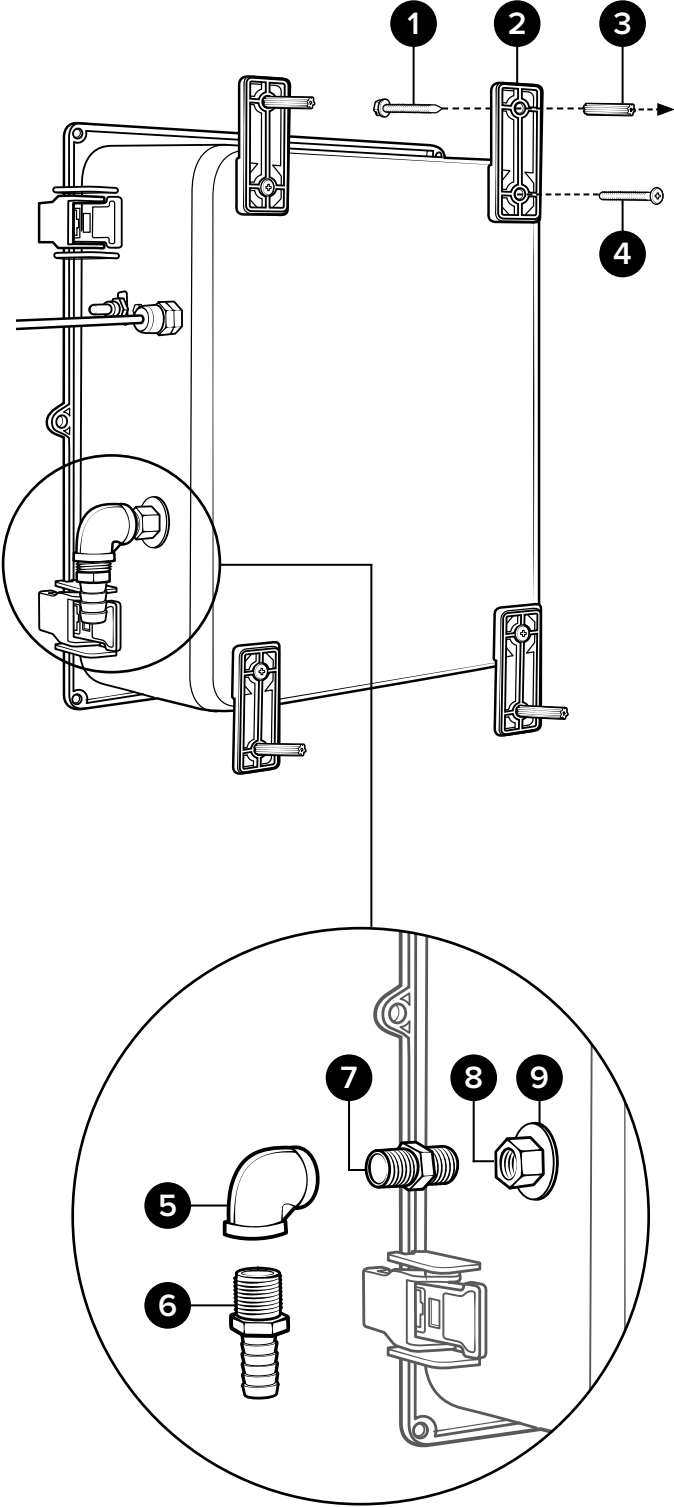
Issue	Solution
No water at rinsing nozzle	<ul style="list-style-type: none">• Verify water supply to control box is turned on and water is getting to the box.• The water solenoid may need to be replaced.
Water is coming out of spinner ball, but spinner ball does not spin	<ul style="list-style-type: none">• Confirm water supply to the control box is a minimum of 9 GPM. Note: If flow is less than 9 GPM, consider opting for the boosted version
Unit does not turn on when activation button is pressed	<ul style="list-style-type: none">• Verify power is supplied to unit and toggle switch is turned.• Inspect electrical connections for corrosion or loose connections. Repair if needed• Make sure the circuit breaker in the control box has not tripped.
Error light on the PLC is illuminated	<ul style="list-style-type: none">• Turn the switch on the PLC from run to stop for 10 seconds, then back to run to clear the error.• Check wire connections on the PLC for loose or corroded connections.

Control Box Assembly

DRS-CB:

Drum rinse system control box assembly - includes mounting feet, and outlet hose fittings

Item number		Description
1	WMS14	Wall mount screw - #14 x 1 ¼ in. - Stainless steel - hex head slotted
2	PB-FT	Poly box foot - gray polypropylene for PBA-12117 and PBA-16138
3	WMS14A	Wall mount screw anchor - #14 x 1 ¼ in. - plastic - 5/16 in. drill size
4	S1034-FH-HL	Screw - #10 x 3/4in - stainless steel flat head Phillips - hi-lo thread
5	SEL12F	SS elbow ½ in. FPT x ½ in. FPT
6	HBSS1234	Hose barb - stainless steel - straight - ½ in MPT x ¾ in. barb
7	SN1212	Stainless hex nipple ½ MPT x ½ MPT
8	SSA12	Stainless adapter ½ MPT x ½ FPT
9	FW12NPT-THK	Flat washer for ½ in. NPT - thick - stainless - 0.88 in. id x 1.5 in. od x 0.12 in. thk



Base and Hose Assemblies

H34BL-25:

Hose assembly - 25 ft. of 3/4 in. blue* hose

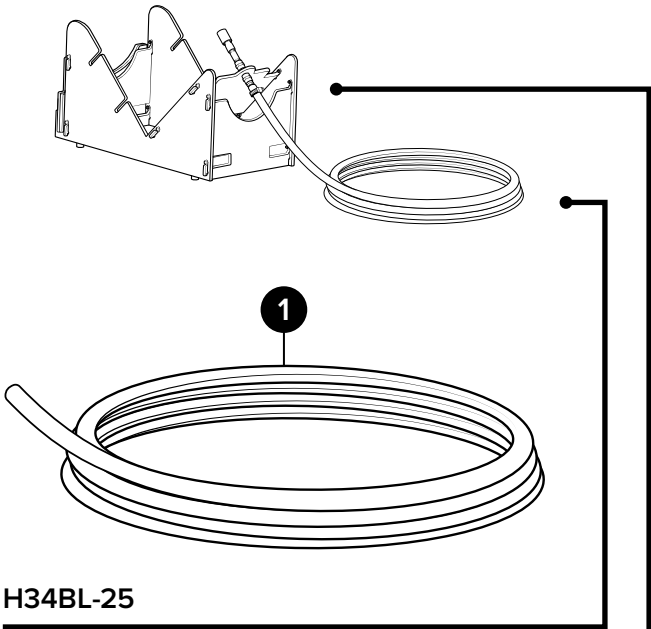
Item number	Description	
1	H34BL-F	3/4 in. blue* hose - hybrid TPE - available per ft.

* Additional colors available, see datasheet for options.

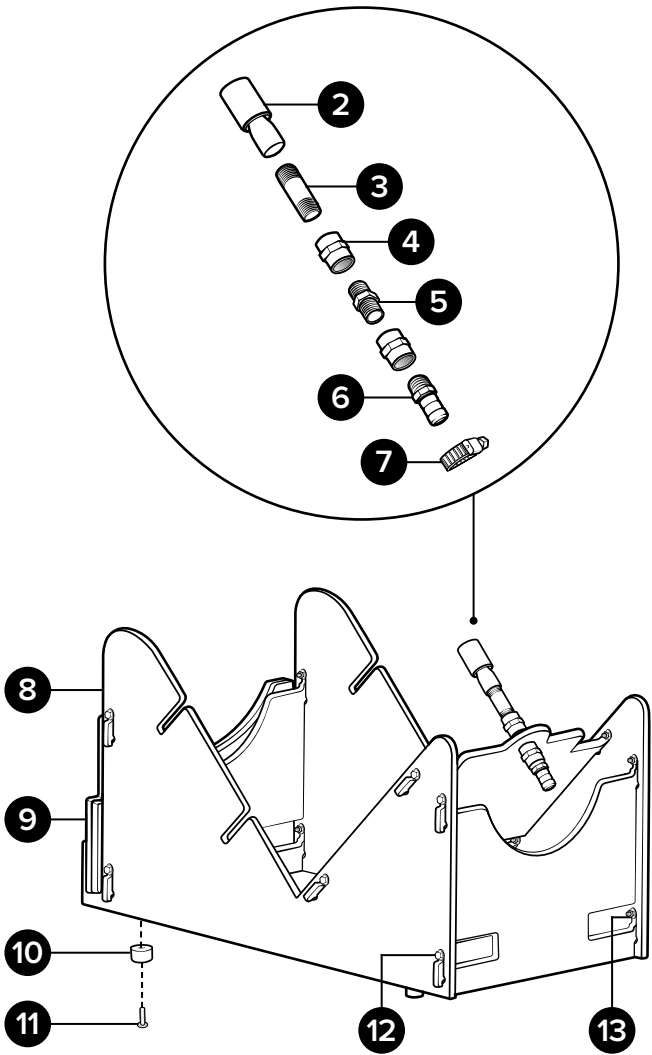
BSA-DRS:

Drum rinse system base assembly - includes nozzle

Item number	Description	
2	RNZSS12	Rotating nozzle - 1/2 in. FBSPT - stainless
3	SSN12212	1/2 in. NPT SCH40S pipe nipple stainless - 2 1/2 in. long
4	SC1212	SS Coupler 1/2 in. by 1/2 in.
5	SN1212	Stainless hex nipple 1/2 MPT x 1/2 MPT
6	HBSS1234	Hose barb - stainless steel - straight - 1/2 in. MPT x 3/4 in. barb
7	SSC34	Screw band clamp - stainless steel - for 3/4 in. Hose
8	BSA-DRS-NNZ	Drum rinse system base assembly - no nozzle
9	PL-DRS-ADPTR	Plate for BSA-DRS - 15 or 30 gallon adapter - PL-4X8
10	RFT12	Rubber foot - 1/2 in. tall - includes internal washer
11	B103258	Bolt - 10-32 x 5/8 in. - stainless steel - truss head Phillips
12	B516181-HH-F	Bolt - 5/16-18 x 1 in. - stainless steel - hex head - flanged
13	LN516F	Locknut - 5/16-18 - stainless steel nylon insert - flanged



H34BL-25



BSA-DRS