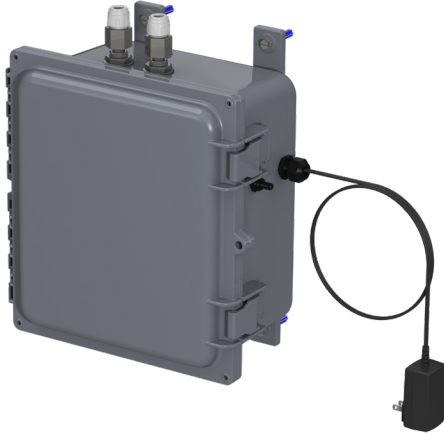


Twin Line Central Doorway Foam Station

DS-STN-TL



Features

- One central pump distributes pre-mixed solution through header system
- Pump and doorway nozzles sold separately
- Up to 100 ft. (30.5 m) total distance between control box and nozzle(s) (Note: distance does not need to be evenly distributed)
- Powered by air and electricity
- Repeat cycle digital timer

Industries

- Food and Beverage
- Manufacturing



How to Buy

The Good Stuff

- **Secure central chemical location**
Keep chemistry secure, away from the production floor; no need to refill containers, chemistry given on demand
- **No refills**
One location to titrate consistent chemical
- **On schedule chemical delivery**
Easy to use repeat cycle digital timer at each station (adjustable via traffic flow) with set delays to ensure coverage

Specifications

- Power type central system, electricity
- Chemical pickup type supplied with pre-mixed solution from a central system solution
- Number of products unit can draw from one product
- Flow rate 2 gal/min (7.6 l/min)
- Timer operation type repeat cycle
- Coverage area **ONE NOZZLE:** up to 9×5 ft. (2.7×1.5 m)
TWO NOZZLES: up to 8×4 ft. (2.4×1.2 m) at each nozzle
THREE NOZZLES: up to 6×3 ft. (1.8×0.9 m) at each nozzle
- Nozzle type twin-line stainless steel nozzle assembly
- Number of nozzles one control box can support up to 3 nozzle assemblies
- Distance from nozzles to control box the combined distance between control box and nozzle(s) must equal 100 ft. (30.5 m) or less
- Tubing/fitting sizes designed for use with 1/2 in. (12.7 mm) outside diameter tubing between control box and nozzle(s)

Requirements

- Compressed air requirements 40-80 psi (2.8-5.5 bar) with 5-10 CFM (141.6-283.2 l/min)
- Liquid temperature range 40-100 °F (4.4-37.8 °C)
- Electrical requirements 100-240 VAC, 50-60Hz, 1A (GFCI protected outlet)
- Operating voltage 24 VDC
- Central system requirements pre-mixed solution must be supplied by a properly sized header system at 2 GPM and 40-80 psi (2.8-5.5 bar)
- Chemical compatibility chemical products used with this equipment must be formulated for this type of application and compatible with unit materials and pump seals. For more information on chemical compatibility, consult the manufacturer or SDS for your product or contact our customer service department.



800 567 5420 | sales@foamit.com