
USER MANUAL

MODEL NUMBER:

GI-5N

GI-5NK

GI-5NV

AND RELATED UNITS

**5 Gallon Air Operated Portable Gel
Equipment**

English (Original Instructions)

READ ALL INSTRUCTIONS BEFORE OPERATING EQUIPMENT



WARNING



Read this manual completely and understand the machine before operating or servicing it.

- Read all instructions before installing or operating unit.
- Always wear appropriate personal protective equipment (PPE) when operating or servicing unit.
- Always follow all chemical safety precautions and handling instructions provided by the chemical manufacturer and Safety Data Sheet (SDS).
- Never point the discharge wand at yourself, another person, or any object you do not want covered in chemical.
- Always depressurize unit after use (as described in the After Use Instructions). Always store unit depressurized, with the discharge ball valve in the closed position.
- Do not exceed an incoming air pressure of 100 psi (7 bar).
- Do not exceed a fluid temperature of 100°F (37°C).
- Only use clean and dry air. Air must be filtered and free of moisture or pump life will be diminished. If needed, install an air dryer before unit.
- Do not use an air lubricator before the unit.

PROTECT THE ENVIRONMENT

Please dispose of packaging materials, old machine components, and hazardous fluids in an environmentally safe way according to local waste disposal regulations.



Always remember to recycle.

*Specifications and parts are subject to change without notice.

READ ALL INSTRUCTIONS BEFORE OPERATING EQUIPMENT

OPTIONS	
	Pump Seal Material
GI-5N	Santoprene (standard)
	Viton (V)
	Kalrez (K)
Add bold option codes to item number as shown. For standard options, no option code is needed.	
Examples:	
<ul style="list-style-type: none"> GI-5N (standard unit with Santoprene pump seals) GI-5NV (unit with Viton pump seals) 	

REQUIREMENTS	
Compressed air requirements	40-80 psi (3-5 bar) with 2 cfm (28.3 l/min)
Liquid temperature range	40-100°F (4.4-37°C)
Chemical compatibility	Chemical products used with this equipment must be formulated for this type of application and compatible with unit materials and pump seals. For more information on chemical compatibility, consult the manufacturer or MSDS for your product or contact our customer service department.

SPECIFICATIONS	
Power type	Compressed air
Chemical pickup type	Draws from pre-mixed solution
Number of products unit can draw from	One product
Suction line length/diameter	3/8 in. (9.5 mm) inside diameter
Capacity	5 gallons (18.9 liters)
Discharge hose diameter/length	20 ft. (6.1 m) hose, with 1/2 in. (12.7 mm) inside diameter
Discharge wand/tip type	10 in. (50.8 cm) poly wand with fan tip and ball valve (Spray tips included: ST1510, ST2508, and ST4008)
Output distance	6-10 ft. (1.8-3 m) (Varies due to viscosity of product)
Output volume	0.5-1 gal/min (1.89-3.79 l/min) (Varies due to viscosity of product and fan tip size)
Flow rate*	2 gal/min (7.6 l/min) (Varies based on spray tip used)
Pump seals	Santoprene, Viton, or Kalrez
Wheel type	Two 3 inch non-marking wheels

*Dilution rates and flow rates given are based on chemical with viscosity of water and factory air pressure settings.

READ ALL INSTRUCTIONS BEFORE OPERATING EQUIPMENT

Operation Instructions

Wearing all PPE and observing all safety precautions dictated by the SDS for your chemical:

1. Fill the tank with the desired gel product.
2. With the discharge ball valve in the closed position, connect an appropriate compressed air line into the air inlet fitting.
3. Open the discharge ball valve to begin dispensing gel chemical.

After Use Instructions:

1. Thoroughly flush the unit with fresh water.
2. Disconnect the air line from the air fitting and relieve any pressure remaining in the system by opening the discharge ball valve.
3. Close the ball valve after all pressure has been relieved from the system. Store the unit with the discharge ball valve in the closed position.

Maintenance Instructions:

To keep your portable unit operating properly, periodically perform the following maintenance procedures:

- Check the air pump for wear and leaks.
- Inspect hoses for leaks or excessive wear. Make sure all hose clamps are in good condition and properly secured.
- Replace filter in regulator as needed.
- Check the suction tube and screen for debris and clean as needed.
- Drain compressor tank on a regular basis to ensure proper operation of pump.

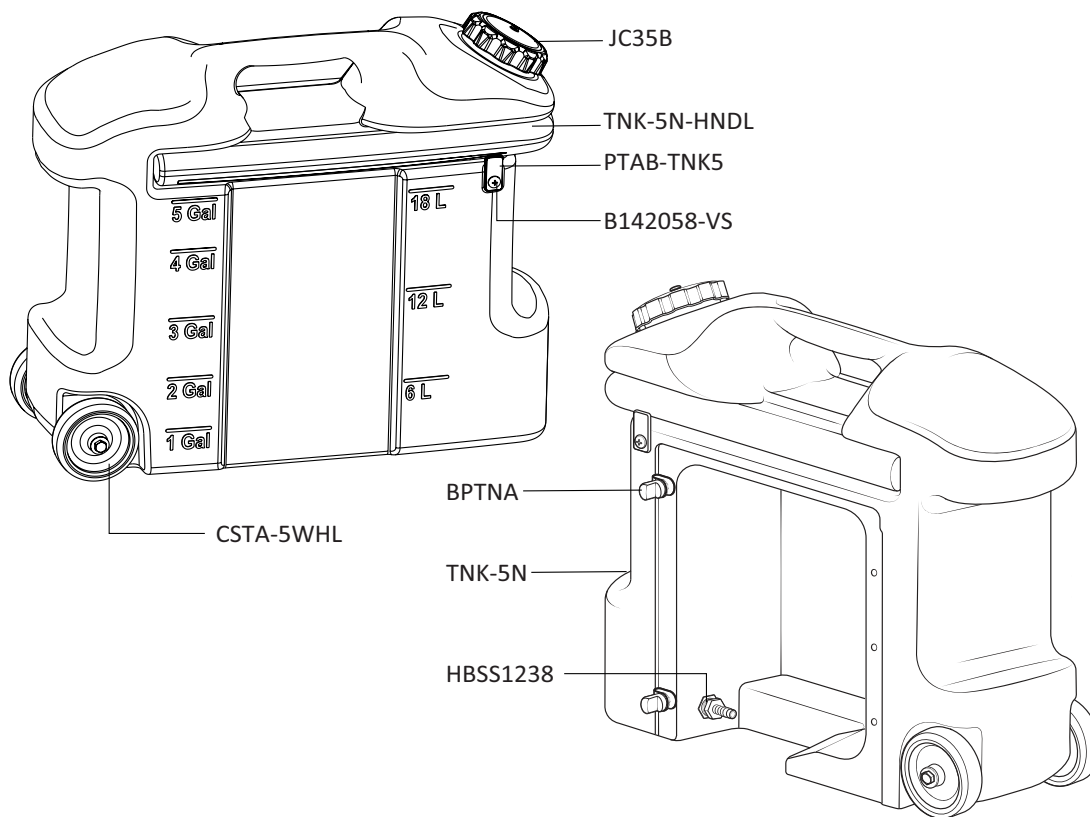
Troubleshooting Instructions:

- Check to ensure that the discharge hose is uncoiled properly, and that there are no kinks that could obstruct fluid flow.
- Check the air regulator bowl and air filter for debris such as water, oil, or rust particles. Clean by unthreading the air regulator bowl from the air regulator.
- Check the strainer for debris or other blockages, and clean as needed. Replace strainer if damaged. Strainer must be used.
- If air passes through the pump without cycling, the pump needs to be replaced.
- Check for proper air pressure on the air gauge. The air regulator is factory set at 50 psi (3.4 bar). Operating range is 40 to 80 PSI (3 to 5 bar) with 2 CFM (56.6 l/min).
- If the unit operates at a reduced pressure:
 - Check the air compressor supplying the unit. If the pressure is less than 40 psi, turn the unit off until the compressor can catch up.
 - If the air supply is 50 psi (3.4 bar) or above, check the air gauge, which should read near 50 psi (3.4 bar). If the air gauge reads more or less than 50 psi (3.4 bar), adjust the pressure by turning the knob on the top of the air regulator.

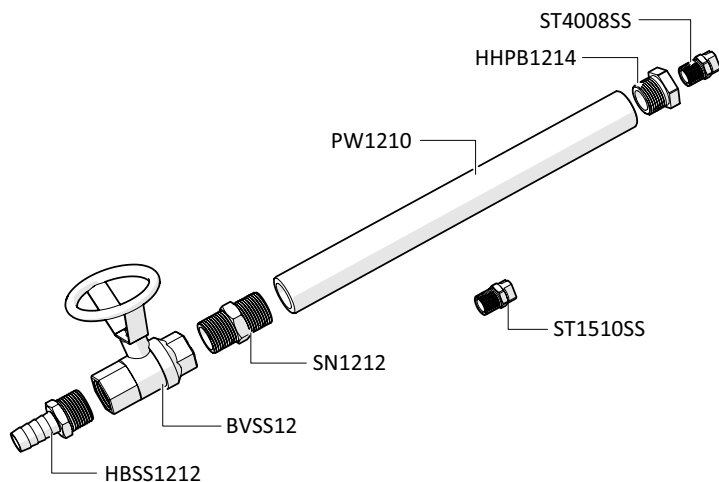
READ ALL INSTRUCTIONS BEFORE OPERATING EQUIPMENT

TANK ASSEMBLY

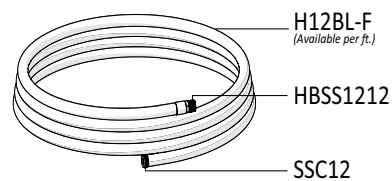
ITEM NUMBER: TNKA-5N-BK



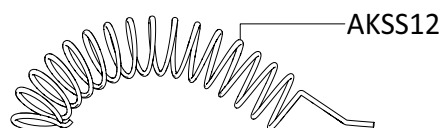
DISCHARGE WAND



DISCHARGE HOSE ASSEMBLY ITEM NUMBER: HA12BL-20

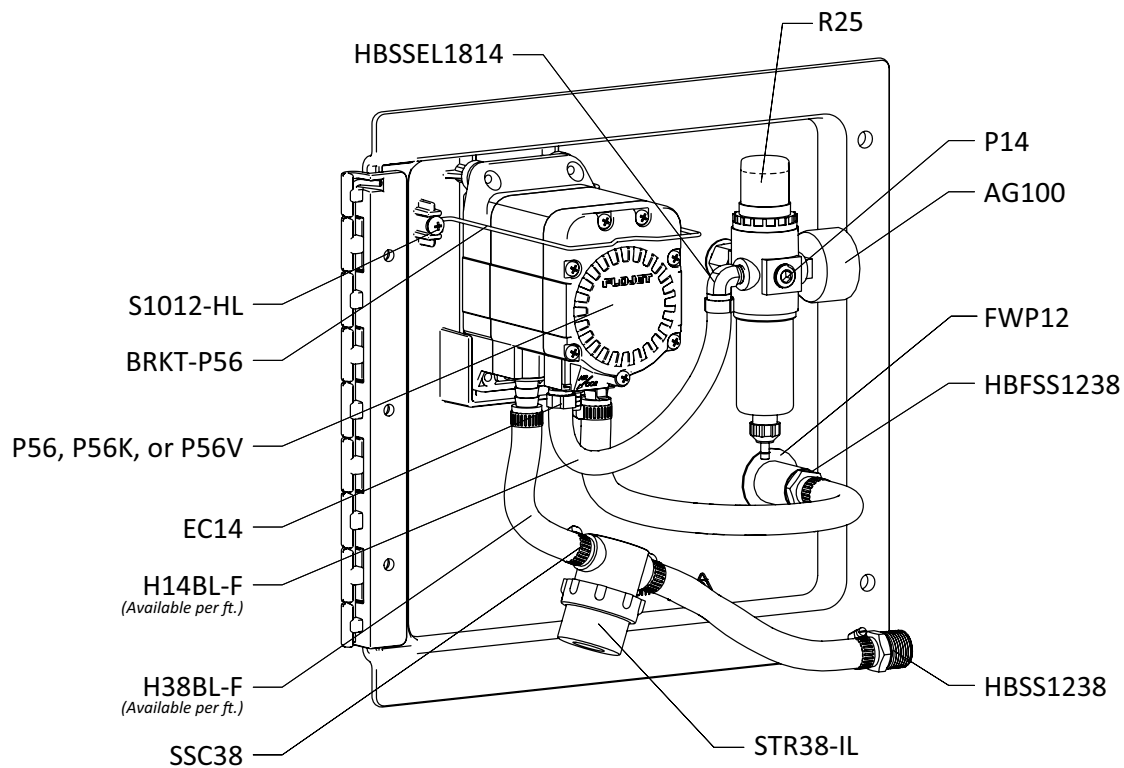


ANTI-KINK SPRING ITEM NUMBER: AKSS12

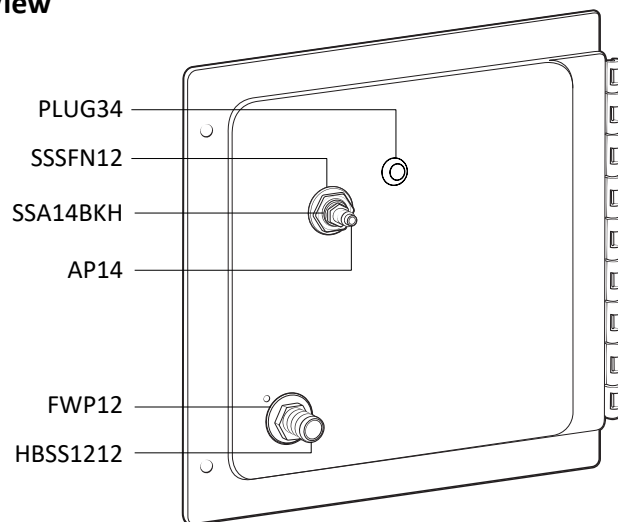


READ ALL INSTRUCTIONS BEFORE OPERATING EQUIPMENT

BACK PLATE Inside View

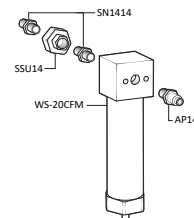


BACK PLATE Outside View

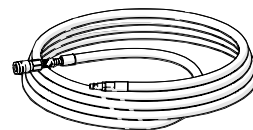


OPTIONAL COMPONENTS

WATER SEPARATOR ITEM NUMBER: WS-20CFM



AIR HOSE ASSEMBLY ITEM NUMBER: AH30



READ ALL INSTRUCTIONS BEFORE OPERATING EQUIPMENT

ITEM NUMBER	DESCRIPTION
AG100	AIR GAUGE - ½ IN. NPT - 100 PSI DRY MODEL
AH30	30 FT AIR HOSE W/ QUICK CONNECT FITTINGS
AKSS12	STAINLESS ANTI-KINK SPRING FOR ½ IN. HOSE
AP14	AIR FITTING ¼ MPT X PLUG-NICKEL-PLATED BRASS
BPTNA	BACK PLATE THUMB NUT ASSEMBLY - INCLUDES BOLT, THUMB NUT, AND TETHER
<i>BST14201125-VS</i>	¾-20 SET BOLT - 1.125 IN. LONG - VIBRA-SEAL
<i>TN1420</i>	¾-20 THUMB NUT - BRASS INSERT - ASSEMBLED WITH TETHER
BRKT-P56	PUMP BRACKET- STAINLESS STEEL
B142058-VS	1/4-20 X 5/8IN BOLT-STAINLESS-TRUSS HEAD PHILLIPS-VIBRASEAL
BVSS12	STAINLESS BALL VALVE-½ IN. NPT
CSTA-5WHL	5 IN. CASTER WHEEL - INCLUDES BOLT AND WASHERS
<i>B51618225</i>	8-8 STAINLESS STEEL HEX HEAD SCREW - BOLT
<i>CST5-WHL</i>	WHEEL - POLYPRO - FOR CST5 AND CST5-L
<i>FW38X78</i>	FLAT WASHER - .406 X .875 OD X .05 THK - 18-8 SS
EC14	OETIKER CLAMP 13.8
F12SS	STAINLESS .875 ID FERRULE FOR 1/2 INCH HOSE
FW58	FLAT WASHER FOR ¾ IN. PIPE - STAINLESS - 0.687 ID X 1.5 OD X 0.07 THK
FWP12	7/8 ID X 1.5 OD X 0.05 THK SSFW
H12BL-F	½ INCH BLUE HOSE-HYBRID TPE-AVAILABLE PER FT.
H14BL-F	¾ INCH BLUE HOSE-HYBRID TPE-AVAILABLE PER FT.
H38BL-F	1 ½ INCH BLUE HOSE-HYBRID TPE-AVAILABLE PER FT.
HBFS1238	HOSE BARB 3/8 X FEMALE PIPE THREAD 1/2 IN STAINLESS STEEL
HBSS1212	STAINLESS HOSE BARB 1/2 X 1/2
HBSS1238	STAINLESS HOSE BARB ½ MPT X ¾ BARB
HBSEL1814	STAINLESS ELBOW ¾ IN. NPT X ¾ IN. HOSE BARB
HHPB1214	HEX HEAD POLY REDUCER BUSHING 1/2IN X 1/4IN
JC35B	BLACK 3.5 INCH ONE WAY VENTED CAP POLYPROPYLENE WITH GASKET AND CHECK VALVE
P14	COUNTERSUNK PLUG-HEXAGON 1/4
P56	PUMP WITH SANTOPRENE SEALS - INCLUDES HOSE BARBS, AIR FITTING, AND EXHAUST BARB
P56K	PUMP WITH KALREZ SEALS - INCLUDES HOSE BARBS, AIR FITTING, AND EXHAUST BARB

ITEM NUMBER	DESCRIPTION
P56V	PUMP WITH VITON SEALS - INCLUDES HOSE BARBS, AIR FITTING, AND EXHAUST BARB
S1012-HL	10-16 X 1/2 IN SCREW-STAINLESS-HI LO
PLPF	PORTABLE FOAMER BACK PLATE W/ HINGE AND HOLES
PLPF-PIN	302 STAINLESS PORTABLE PLATE HINGE PIN
PLUG34	TUBING PLUG 3/4 (FITS 11/16 HOLE)
PTAB-5N	HDPE TAB FOR TANK-5N HNDL
PW1210	½ IN. FPT X ½ IN. FPT-10 IN. LONG-BLACK POLYPRO
R25	AIR REGULATOR - 1/4FPT TWO PORT 1/8FPT TWO PORT - INCLUDES FILTER AND BOWL
<i>AFR25</i>	AIR FILTER FOR R25
<i>ABR25</i>	METAL AIR BOWL FOR R25
SN1212	1/2IN HEX STAINLESS STEEL NIPPLE
SN1414	STAINLESS HEX NIPPLE ¼ MPT X ¼ MPT
SSA14BKH	BULKHEAD ADAPTER - STAINLESS - ¼ NPT X ¼ NPSM
SSA14	SS304 MALE/FEMALE ADAPTOR 1/4 NPT X 1/4 NPT
SSC12	STAINLESS SCREW BAND CLAMP FOR ½ IN. HOSE
SSC38	STAINLESS SCREW BAND CLAMP FOR ¾ IN. HOSE
SS-TAB	STAINLESS STEEL TAB 5/8 X 3/4 WITH 1/4 INCH MOUNTING HOLE
SSSFN12	SERRATED FLANGE NUT - STAINLESS - ½ IN.
SSU14	STAINLESS STEEL UNION- 1/4 INCH FP
ST1510SS	SPRAY TIP-15 DEGREE FAN-1.0 GPM-STAINLESS-1/4 MPT
ST4008SS	SPRAY TIP-40 DEGREE FAN-0.8 GPM-STAINLESS-1/4 MPT
STR38-IL	IN LINE STRAINER 3/8 BARB 20 MESH 304 STAINLESS EDPM GSKT
TNK-5N	5 GALLON NATURAL TANK
TNK-5N-HNDL	HANDLE FOR TNK-5N
WS-20CFM	WATER SEPARATOR - 20 CFM - ¼ IN. FPT PORTS