

---

# USER MANUAL

**MODEL NUMBER:  
MS-WC-2P**

**DUAL MIXING STATION - Ratio of 1:1:10  
to 1:1:20 (Part A:Part B: Water)**

**WARNING: UNIT DOES NOT INCLUDE  
A BACKFLOW PREVENTER, WHEN  
INSTALLING UNIT REFER TO LOCAL  
PLUMBING CODES.**

---

**English (Original Instructions)**

---

## READ ALL INSTRUCTIONS BEFORE OPERATING EQUIPMENT



# WARNING



**Read this manual completely and understand the machine before operating or servicing it.**

1. Always wear protective clothing, gloves, and eyewear while operating or servicing unit.
2. Avoid contact of cleaning agent with skin and eyes. If contact occurs, see SDS sheet for further first aid measures.
3. Follow safety instructions of chemical manufacturer (SDS).
4. Never point the discharge wand at anyone.
5. UNIT DOES NOT INCLUDE A BACKFLOW PREVENTER, WHEN INSTALLING UNIT REFER TO LOCAL PLUMBING CODES.
6. Only use with cold water.

### PROTECT THE ENVIRONMENT

Please dispose of packaging materials, old machine components, and hazardous fluids in an environmentally safe way according to local waste disposal regulations.



Always remember to recycle.

\*Specifications and parts are subject to change without notice.

### Operation Instructions:

This system is designed to accurately blend two chemicals and dilute with water.

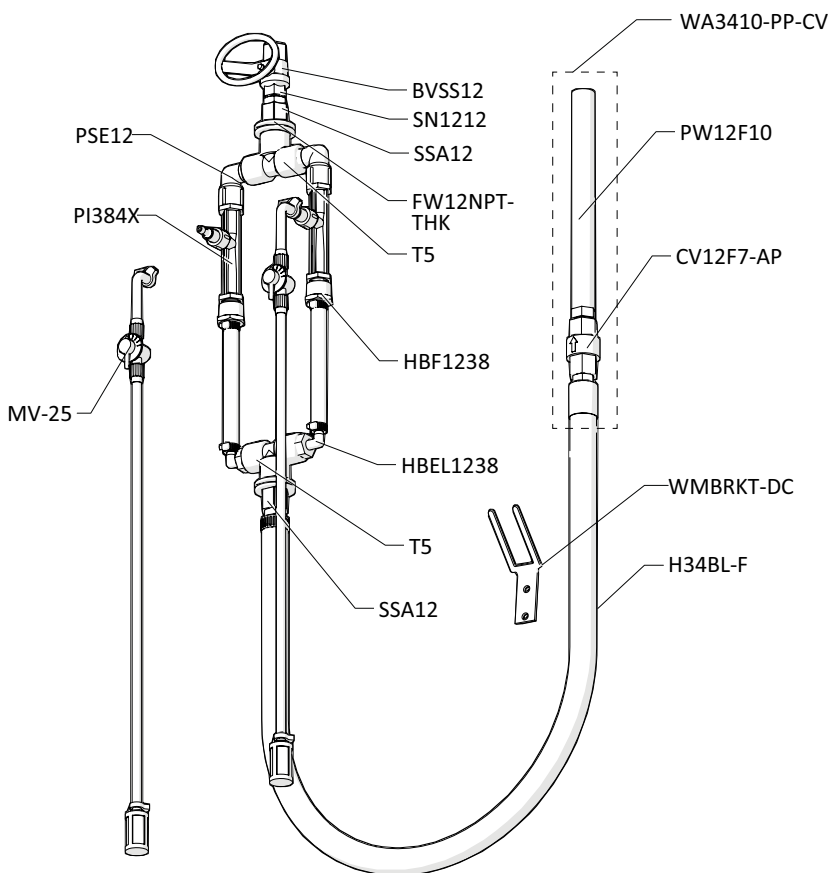
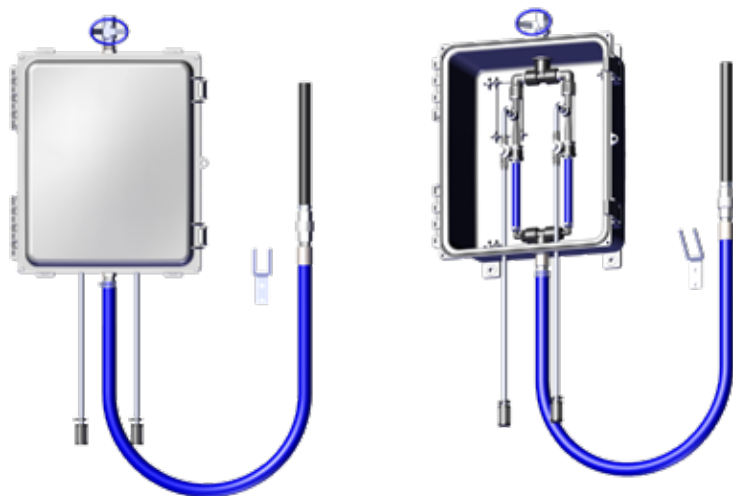
1. Determine where the two chemical drums will be located.
2. Mount the MS-WC-2P on the wall using the included wall anchors.
3. Mount the Fill Wand Holder to the wall using the included wall anchors.
4. **Connect the water source to the MS-WC-2P's water inlet using an approved backflow preventer.**
5. Insert a chemical pick-up line into each drum.
6. Open the MS-WC-2P and adjust the meter valves to the same value. The maximum setting is recommended for a 1:1:10 dilution ratio. Refer to chart for dilution ratio. NOTE: THAT ALL DILUTION RATIOS WILL VARY BASED ON VISCOSITY. THE CHART ASSUMES THE PRODUCT VISCOSITY IS 1CP. WATER VISCOSITY = 1 CP. It is recommended to confirm proper dilution by titration.
7. Place the Fill Wand into the container to be filled.
8. Turn water on and begin filling the container. Check to make sure chemical is being drawn through the chemical pick-up lines.
9. Once both chemicals are flowing through the chemical pick up lines, turn the system off and return the Fill Wand to the Wand Holder.

## READ ALL INSTRUCTIONS BEFORE OPERATING EQUIPMENT

Injector Performance Table							
Injector Model: PI384X							
Operating Pressure PSIG		Water Suction		Operating Pressure PSIG		Water Suction	
Injector Inlet	Injector Outlet	Water Flow GPM	Chemical Suction fl. oz./min.*	Injector Inlet	Injector Outlet	Water Flow GPM	Chemical Suction fl. oz./min.*
15	0	1.2	55.4	45	0	2.1	67.8
	5		23.4		5		63.2
	7		8.2		10		61.4
	10				15		37.8
	12				20		22.0
20	0	1.4	59.2	50	25	2.2	2.8
	5		34.2		30		
	10		6.0		35		
	12				0		67.6
	15				5		65.4
25	0	1.6	66.2	60	10	2.5	63.4
	5		44.8		20		50.6
	10		22.4		25		30.4
	15				30		13.4
	20				35		
30	0	1.7	67.6	70	40	2.6	
	5		49.2		0		68.6
	10		34.6		5		68.4
	15		13.8		10		68.0
	20				15		63.8
35	0	1.9	67.4		20		48.2
	5		58.0		30		18.2
	10		38.2		35		3.0
	15		21.4		40		
	20				45		
40	25	2.0			0		
	0		67.8		5		70.2
	5		63.0		10		71.6
	10		48.2		15		69.4
	15		28.4		20		65.8
	20		7.0		30		61.4
	25				40		35.8
	30				45		6.8
					50		
					55		

\* Injection rates will vary based on chemical viscosity and many other factors. We recommend testing unit output to verify injection rate prior to use.

## READ ALL INSTRUCTIONS BEFORE OPERATING EQUIPMENT



ITEM NUMBER	DESCRIPTION
BVSS12	STAINLESS BALL VALVE- 1/2 IN NPT
CV12F7-AP	1/2 CHECK VALVE 7 LB SPRING - HASTELLOY SPRING - EP SEALS - ACID PROOF - BLK/WHT CHK
F34SS	STAINLESS CRIMP FERRULE FOR 3/4 IN HOSE
FW12NPT	FLAT WASHER FOR 1/2 IN NPT - STAINLESS - 0.88IN ID X 1.5IN OD X 0.05IN THK
FW12NPT-THK	FLAT WASHER FOR 1/2 IN NPT - THICK - STAINLESS - 0.88IN ID X 1.5IN OD X 0.12IN THK
HA34BL-10	HOSE ASSEMBLY - 10FT OF 3/4IN BLUE HOSE - INCLUDES FERRULED HOSE BARB, SCREW BAND CLAMP
H34BL-F	3/4 IN ID BLUE HOSE - HYBRID TPE - AVAILABLE PER FT
H38BL-F	3/8 IN ID BLUE HOSE - HYBRID TPE - AVAILABLE PER FT
HBEL1238	HOSE BARB ELBOW 1/2 X 3/8
HBF1238	HOSE BARB - POLYPROPYLENE - 1/2IN FPT X 3/8IN BARB
HBSS1234	STAINLESS HOSE BARB 1/2 X 3/4
MV-25	METERING VALVE FOR MAZZEI INJECTOR WITH SUCTION LINE AND STRAINER
N1213	1/2-13 FIN HEX NUT 18-8 PLN
PBA-16138	POLY BOX ASSEMBLY - 16IN X 13IN X 8IN - GRAY POLYPROPYLENE - INCLUDES BRAND LABEL AND MOUNTING HARDWARE
PBA-16138	POLY BOX ASSEMBLY - 16IN X 13IN X 8IN - GRAY POLYPROPYLENE - INCLUDES BRAND LABEL AND MOUNTING HARDWARE
PB16138-LID	POLY BOX LID - GRAY POLYPROPYLENE - FOR PBA-16138 - INCLUDES PB-GSKT ROPE SEAL
PB16138-BOX	POLY BOX - GRAY POLYPROPYLENE - FOR PBA-16138
PB-FT	POLY BOX FOOT - GRAY POLYPROPYLENE - FOR PBA-12117 AND PBA-16138
PB-LTCH	POLY BOX LATCH - GRAY POLYPROPYLENE - TWO PIECES ASSEMBLED - FOR PBA-12117 AND PBA-16138
PB-PIN	STAINLESS STEEL HINGE PIN FOR PB16138 AND PB12117
PI384X	1/2IN POLY HIGH FLOW INJECTOR
PN1212	1/2IN MPT X 1/2IN MPT POLY NIPPLE
PSE12	POLY STREET ELBOW - ARAG
PW12F10	1/2IN FNPT AND 1/2IN FNPT WAND - BLACK POLYPROPYLENE - 10IN LONG
S1034-FH-HL	SCREW - #10 X 3/4IN - STAINLESS STEEL - FLAT HEAD PHILLIPS - HILO THREAD
SN1212	1/2IN HEX STAINLESS STEEL NIPPLE
SSA12	STAINLESS MALE/FEMALE S.S. ADAPTOR 1/2IN X 1/2IN
SSC34	SCREW BAND CLAMP - STAINLESS STEEL - 3/4IN HOSE
SSC38	SCREW BAND CLAMP - STAINLESS STEEL - 3/8IN HOSE
T5	1/2 POLY TEE
WA3410-PP-CV	WAND ASSEMBLY FOR 3/4IN HOSE - STRAIGHT - 10IN POLYPROPYLENE WAND WITH 7LB CHECK VALVE - SS CONNECTOR - INCLUDES SS FERRULED HOSE BARB AND SCREW BAND CLAMP
WMBRKT-DC	WALL MOUNT HANGING BRACKET
WMS14	WALL MOUNT SCREW - #14 X 1 1/4IN - STAINLESS STEEL - HEX HEAD SLOTTED
WMS14A	WALL MOUNT SCREW ANCHOR -#14 X 1 1/4IN - PLASTIC - 5/16IN DRILL SIZE