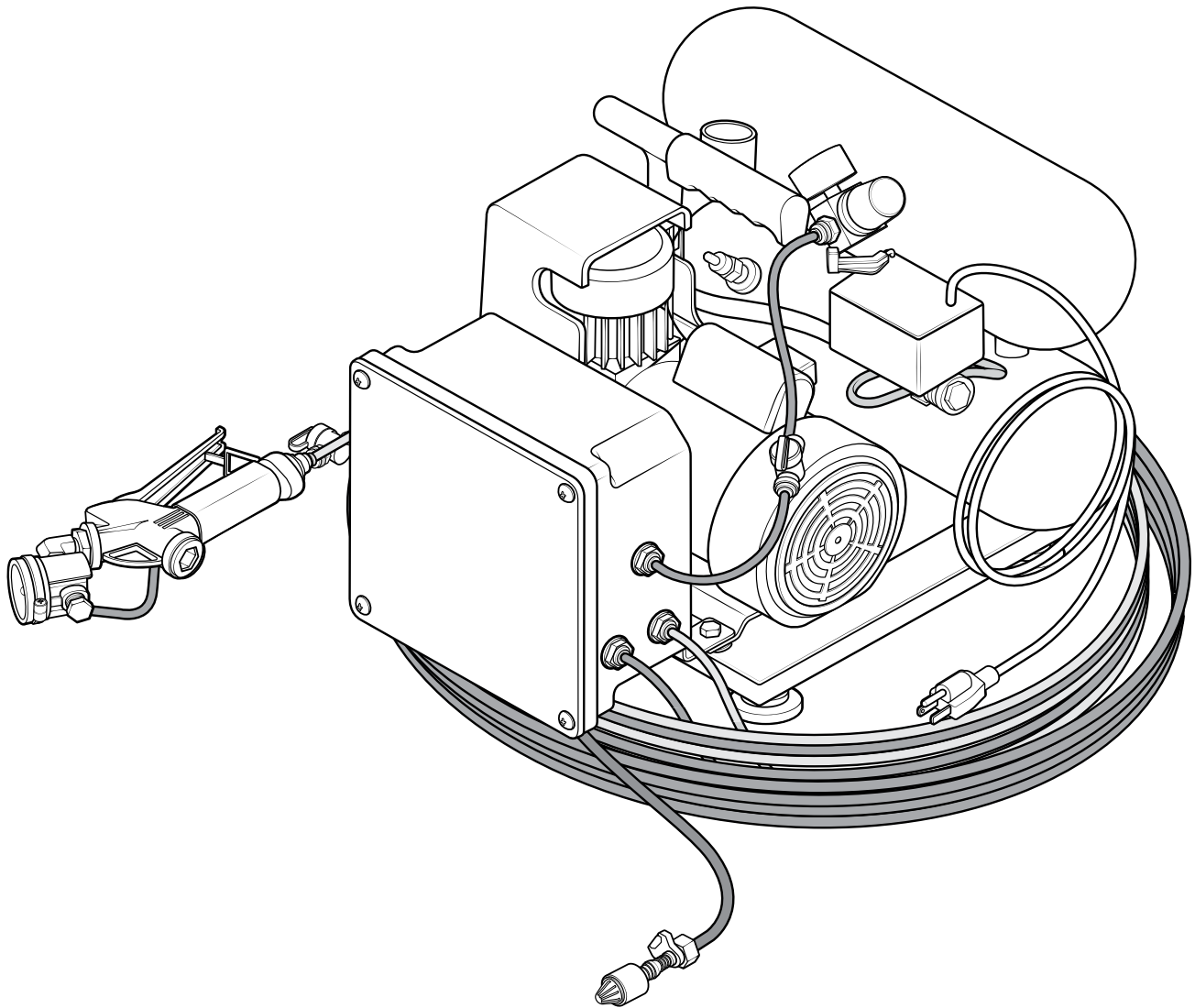


Pre-Mix Electric Fog / Mist Unit

User Manual

MU-JR-PSGN130-H50

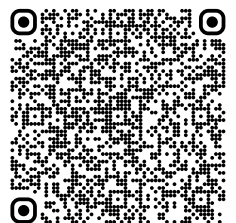


READ ALL INSTRUCTIONS BEFORE USING OR
SERVICING THIS UNIT. KEEP THIS MANUAL IN A
LOCATION THAT IS READILY AVAILABLE TO USERS
AND SERVICE TECHNICIANS.

English (Original Instructions)



Scan this code for
user manual



Safety

WARNING

PEOPLE OR OBJECTS CAN BE HURT OR DAMAGED IF THIS UNIT IS NOT USED CORRECTLY!



Failure to read all the instructions before operating the unit may result in personal injury or death from the improper use or the chemical solution. Anyone handling, operating or using the unit must read and understand the instructions in the manual. The buyer assumes all responsibility for safety and proper use in accordance with the instructions.



Using or servicing the unit without appropriate personal protective equipment (PPE) may result in serious injury such as burns, rashes, eye, throat or lung damage and death. Always wear PPE as indicated in the Safety Data Sheet (SDS) when using or servicing the unit. Protect eyes, skin, and lungs against drifting spray.



Chemical solutions may pose a health risk and death if they contact the skin or eyes, are inhaled or swallowed. Always read and follow all chemical safety precautions and handling instructions provided by the chemical manufacturer and the SDS associated with the chemical solution before using the unit.



Pressure within the equipment may cause an unexpected release of the chemical solution and cause serious injury such as burns, rashes, eye damage, throat or lung damage and death. Always depressurize and clean the unit after each use. Never leave the unit unattended while pressurized.

Using the unit with fluid temperatures above 100°F (37.8°C) may result in scalding, burns, serious injury or death. DO NOT use a solution with a temperature above 100°F (37.8°C).

Operating the unit when damaged or leaking may result in exposure to chemical solutions, serious injury or death. Never use the unit if it is damaged or leaking.

Never point the discharge wand at yourself, another person, or any object you do not want covered in chemical.



Using incoming air pressure exceeding 100 psi (6.9 bar) may result in pressure buildup, explosion, serious injury or death. DO NOT exceed 100 psi (6.9 bar) incoming air pressure when operating the unit.

Use of hydrocarbons and flammable products may result in explosions, fire and serious injury or death. Never use hydrocarbons or flammable products with the unit.



Mixing an alkaline with an acid may result in a chemical reaction. Overheating of the mixture may cause it to splatter caustic compounds or release hazardous fumes, gas and vapors. Always flush unit with fresh water thoroughly when switching from an alkaline to an acid or an acid to an alkaline.

NOTICE

Servicing or modifying this unit with parts not listed in this manual may cause the unit to operate improperly. Do not use unauthorized parts when servicing the unit.

Use of an air lubricator before the unit may result in diminished performance and damage to the unit. Do not use an air lubricator before the unit.

Moisture in the air lines will damage the pump and diminish the pump life. The air must be filtered, clean, dry and free of moisture. If needed, install an air dryer before the unit.

PROTECT THE ENVIRONMENT



Please dispose of packaging materials, old machine components, and hazardous fluids in an environmentally safe way according to local waste disposal regulations

Product Overview

Requirements

| | |
|-----------------------------|--|
| Compressed air requirements | 50-80 psi (3.4-5.5 bar) |
| Liquid temperature range | 40-100°F (4.4-37.8°C) |
| Chemical compatibility | Chemical products used with this equipment must be formulated for this type of application and compatible with unit materials and pump seals. For more information on chemical compatibility, consult the manufacturer or SDS for your product or contact our customer service department. |

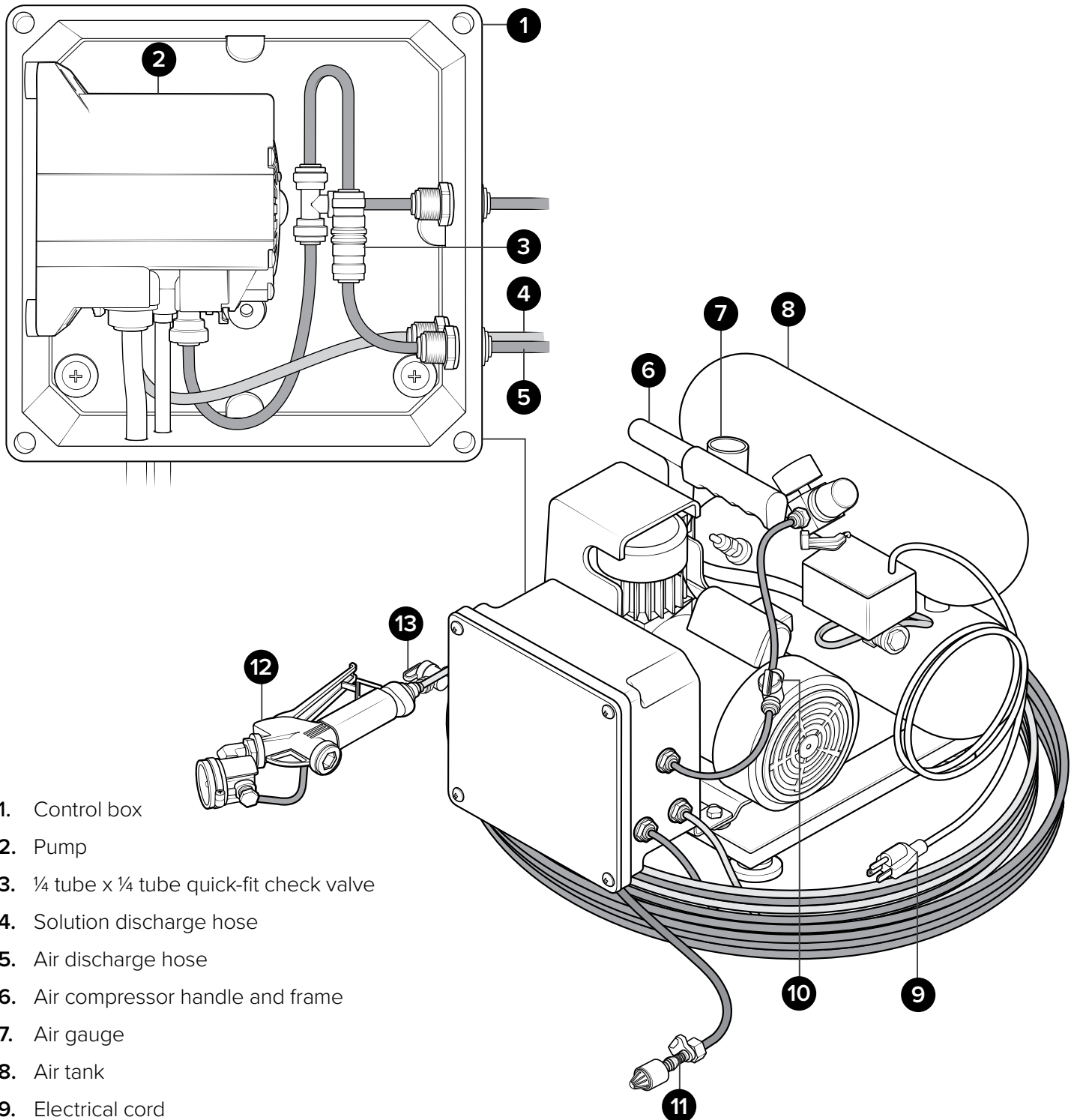
Specifications

| | |
|---------------------------------------|---|
| Power type | Electricity |
| Chemical pickup type | Draws from pre-mixed solution |
| Number of products unit can draw from | One product |
| Suction line length/diameter | 6 ft. (1.8 m) clear hose with 1/4 in. (6.4 mm) inside diameter |
| Discharge line length/diameter | 50 ft. (15.2 m) twin-line tubing 1/4 in. (6.4 mm) outside diameter |
| Discharge wand/tip type | Polypropylene trigger handle for liquid output and polypropylene fog/mist nozzle with Kynar tip |
| Output distance | 3-5 ft. (0.9-1.5 m) |
| Output volume | 8.9 oz/min (0.3 l/min) at 50 psi (3.4 bar) - static |
| Flow rate* | 8.9 oz/min (0.3 l/min) at 50 psi (3.4 bar) - static |
| Pump seals | Santoprene, Viton, or Kalrez |
| Droplet size | 15 microns at 50 psi (3.4 bar) |
| Coverage area | 1 liter of solution will cover approximately 1000 cubic feet |
| Nozzle type | Pneumatic fog nozzle |
| Number of nozzles | One |

*Dilution rates and flow rates given are based on chemical with viscosity of water and factory air pressure settings.

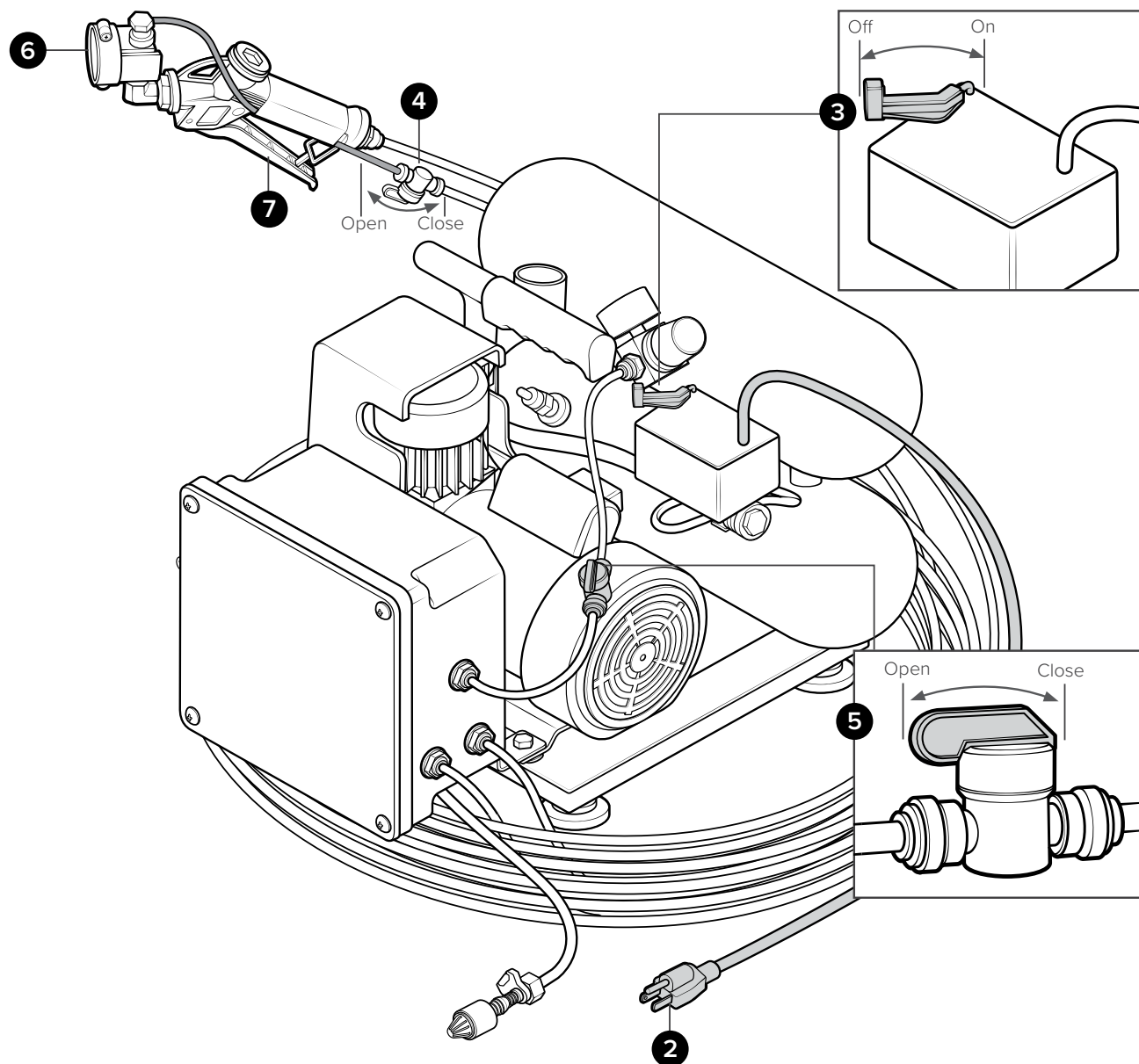
Product Components

Get to know the MU-JR-PSGN130-H50 components that you will need to use, adjust or assemble.



1. Control box
2. Pump
3. ¼ tube x ¼ tube quick-fit check valve
4. Solution discharge hose
5. Air discharge hose
6. Air compressor handle and frame
7. Air gauge
8. Air tank
9. Electrical cord
10. Air inlet shut-off valve
11. Suction hose
12. PSGA-PNZ wand
13. Air discharge shut-off valve

Using your unit



Operating Instructions

1. Follow all instructions from chemical manufacturer. Place the chemical suction line into a container of pre-mixed chemical solution.
2. Plug unit into GFCI protected 120 VAC power outlet.
3. Turn the power switch ON to start the air compressor.
4. Verify that the air shut-off valve at the trigger gun is in the closed position.
5. Open the air inlet valve to the control box.
6. Point the discharge wand in a safe direction and open the air shut-off valve at the trigger gun.
7. Squeeze the trigger handle to begin misting.
Note: Both discharge valves should be completely open while misting.
8. To stop misting, release trigger handle and close the air shut-off valve.

Using your unit

After Use Instructions

9. Thoroughly flush unit with fresh water after use.
10. Shut off the air supply to the unit by closing the air inlet valve to the control box.
11. Turn the power switch OFF to shut off the air compressor.
12. Unplug the air compressor.
13. Open the air shut-off valve at the trigger gun and squeeze the trigger handle to relieve any pressure remaining in the unit. Once pressure is relieved, release trigger handle and close air shut-off valve.
14. Depressurize and drain the air compressor tank by opening the drain valve on the compressor tank.

NOTICE

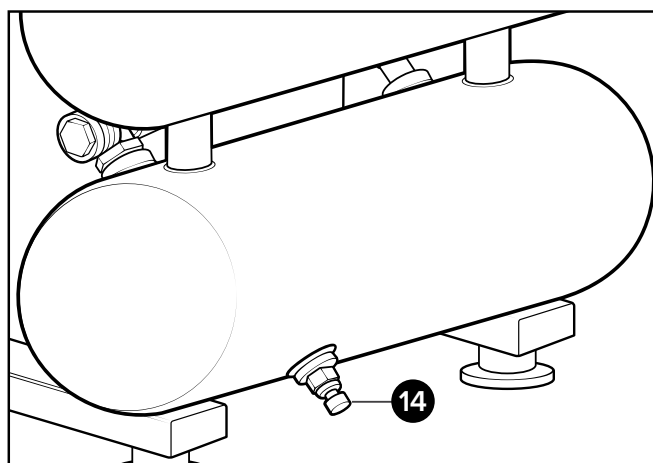
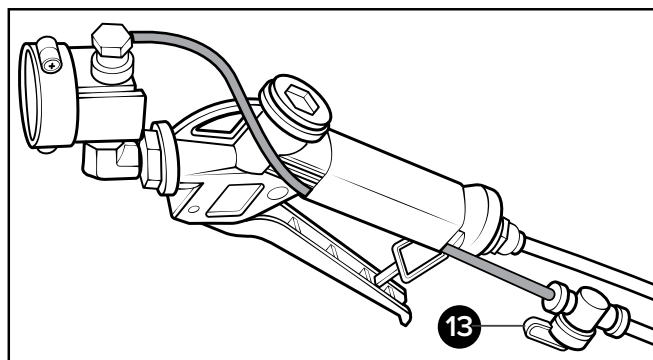
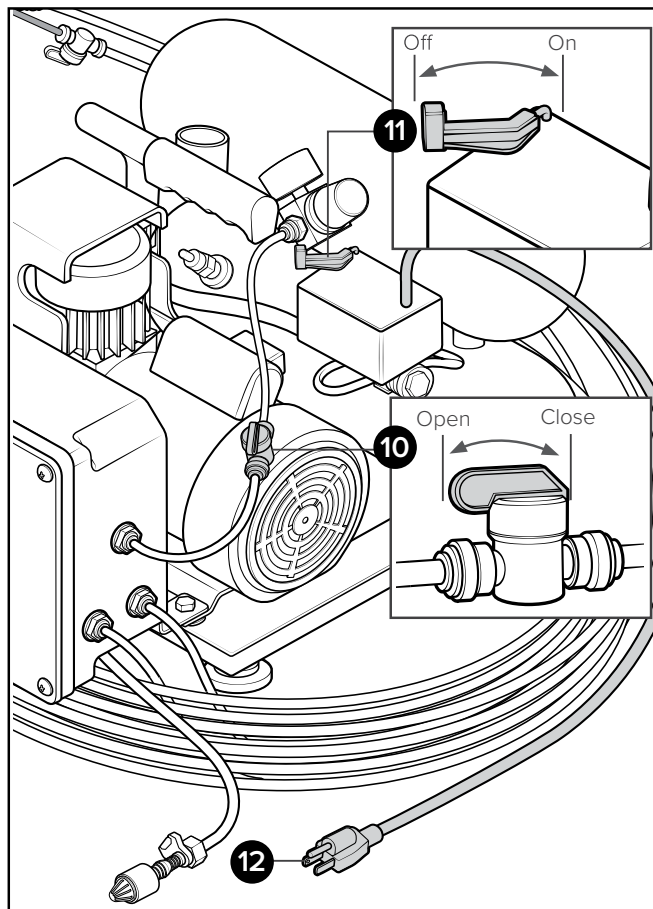
Air Compressor Instructions

The use of any extension cord will cause some drop in voltage and loss of power. For optimum performance, plug the compressor power cord directly into a grounded wall socket.

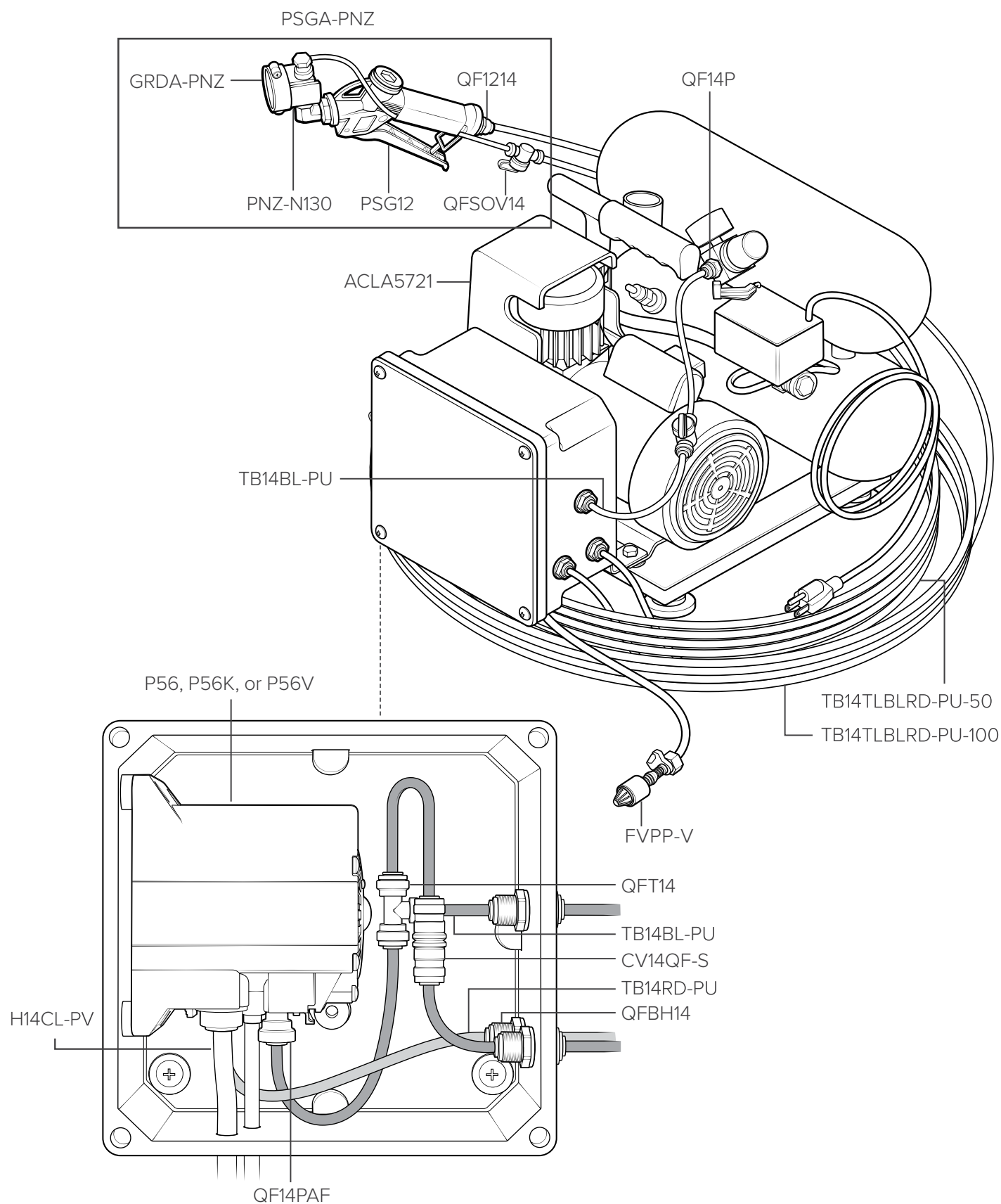
Do not use an extension cord unless absolutely necessary. It is better to use a long air hose to reach area where work is being performed. If use of an extension cord can not be avoided, refer to the following guidelines

Use only 3-wire extension cord. Make sure your extension cord is in good condition. Be sure gauge is sufficient to carry the current the unit will draw. Note that the smaller the gauge the heavier the cord.

Example: Gauge 10 is heavier than gauge 12.



Parts



| Item number | Description |
|-------------------|---|
| ACLA5721 | 1-HP 2-gallon twin stack air compressor |
| CV14QF-S | ¼ tube x ¼ tube check quick fit - small |
| FVPP-V | FOOT VALVE - POLYPROPYLENE BODY - NOT CUT TO SIZE - VITON CHECK VALVE - BLACK |
| GRDA-PNZ | Guard assembly - for pneumatic nozzle - includes 2 guard halves and hardware |
| H14CL-PV | ¼ in. id ¾ in. od clear hose - PVC - available per ft. |
| P56 | Pump with Santoprene seals - includes hose barbs, air fitting, and exhaust barb |
| P56K | Pump with Kalrez seals - includes hose barbs, air fitting, and exhaust barb |
| P56V | Pump with Viton seals - includes hose barbs, air fitting, and exhaust barb |
| PNZ-N130 | Pneumatic mixing nozzle - polypropylene body - blue Kynar tip - 3.7 Gal/hr |
| PSG12 | Poly spray gun with 2x ½ in. straight thread - gray handle with red clip - 316SS internal spring - includes 2x O-ring |
| PSGA-PNZ | Poly spray gun assembly - with 1x PZN-N130 pneumatic nozzle - includes nozzle guard |
| QF1214 | Quick fit - ½ MPT x ¼ OD tube - polypropylene |
| QF14P | Quick fit - ¼ MPT X ¼ OD tube - polypropylene |
| QF14PAF | Quick fit - ¼ MPT pump air fitting |
| QFBH14 | Bulkhead ¼ in. tube polypropylene |
| QFSOV14 | Shut off valve ¼ in. tube - polypropylene |
| QFT14 | Union tee ¼ in. tube - polypropylene |
| TB14BL-PU | ¼ in. od blue tube - polyurethane - available per ft. |
| TB14RD-PU | ¼ in. od red tube - polyurethane - available per ft. |
| TB14TLBLRD-PU-50 | ¼ in. od twin line bonded blue and red tube - polyurethane - 50 ft. section |
| TB14TLBLRD-PU-100 | ¼ in. od twin line bonded blue and red tube - polyurethane - 100 ft. section |