
USER MANUAL

MODEL NUMBER:
SP-30N
SP-30NK
SP-30NV
AND RELATED UNITS

**30 Gallon Air Operated Portable Spray
Equipment**

English (Original Instructions)

READ ALL INSTRUCTIONS BEFORE OPERATING EQUIPMENT



WARNING



Read this manual completely and understand the machine before operating or servicing it.

- Read all instructions before installing or operating unit.
- Always wear appropriate personal protective equipment (PPE) when operating or servicing unit.
- Always follow all chemical safety precautions and handling instructions provided by the chemical manufacturer and Safety Data Sheet (SDS).
- Never point the discharge trigger gun at yourself, another person, or any object you do not want covered in chemical.
- Always depressurize unit after use (as described in the After Use Instructions), and store unit depressurized.
- Do not exceed an incoming air pressure of 100 psi (6.9 bar).
- Do not exceed a fluid temperature of 100°F (37.8°C).
- Only use clean and dry air. Air must be filtered and free of moisture or pump life will be diminished. If needed, install an air dryer before unit.
- Do not use an air lubricator before the unit.

PROTECT THE ENVIRONMENT

Please dispose of packaging materials, old machine components, and hazardous fluids in an environmentally safe way according to local waste disposal regulations.



Always remember to recycle.

*Specifications and parts are subject to change without notice.

Specifications:

Hose 30 feet reinforced hose, 3/8 inch inside diameter
(9 meters reinforced hose, 9.5 mm inside diameter)
Tank Capacity..... 30 gallons (113.6 liters)
Spray Output..... 2 gallons/minute (7.5 liters/minute)
Spray Output Distance..... 10 to 12 feet (3 to 4 meters)
Liquid Temperature 40°F to 100°F (4.4°C to 37°C)

Dimensions:

Length 31 in (787 mm) approximately
Width 21 in (533 mm) approximately
Height 37 in (940 mm) approximately
Weight, including discharge hose and wand:
(Empty) 45 lbs (20 kg) approximately

Requirements:

Compressed Air Source Requirements: Air regulator is factory set at 50 psi (3.4 bar). Operating range is 40 to 80 PSI (2.8 to 5.5 bar) with 2 CFM (56.6 l/min).

Chemical Requirements: Follow all instructions from chemical manufacturer and Safety Data Sheet (SDS).

Air Operated Double Diaphragm Pump Models Offered:

P56: Polypropylene body with Santoprene diaphragm

P56V: Polypropylene body with Viton diaphragm

P56K: Polypropylene body with Kalrez diaphragm

Acceptable Products:

Alkaline cleaners, Caustic cleaners, Sanitizers, and Acids

* D-Limonene may only be used with Kalrez pump

* Chlorine may only be used with Viton or Kalrez pump

DO NOT USE: All hydrocarbons

READ ALL INSTRUCTIONS BEFORE OPERATING EQUIPMENT

Operation Instructions

Wearing all PPE and observing all safety precautions dictated by the MSDS for your chemical:

1. Fill the tank with the solution to be sprayed.
2. Connect an appropriate compressed air line into the air inlet fitting.
3. Squeeze the discharge trigger gun to begin spraying.

After Use Instructions:

1. Thoroughly flush the unit with fresh water.
2. Disconnect the air line from the air fitting and relieve any pressure remaining in the system by squeezing the discharge trigger gun.
3. Release the discharge trigger gun after all pressure has been relieved from the system.

Maintenance Instructions:

Warning: Performing any maintenance with the unit pressurized, and connected to the air supply may result in serious injury or death. Always ensure that the unit has been depressurized, and disconnected from the air supply before conducting any maintenance.

To keep your portable unit operating properly, periodically perform the following maintenance procedures:

- Check the air pump for wear and leaks.
- Inspect hoses for leaks or excessive wear. Make sure all hose clamps are in good condition and properly secured.
- Replace filter in regulator as needed.
- Check the suction tube and screen for debris and clean as needed.
- Drain compressor tank on a regular basis to ensure proper operation of pump.

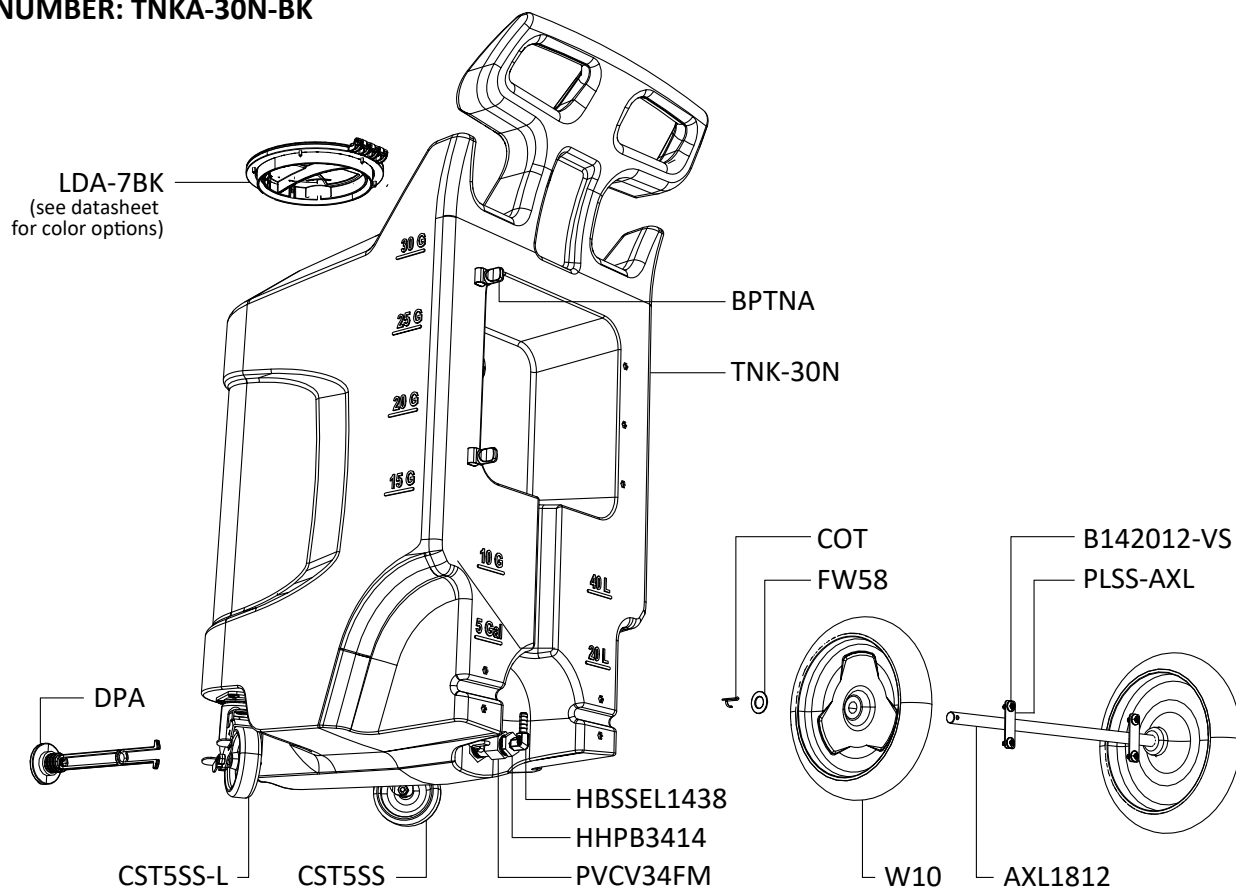
Troubleshooting Instructions:

- Check to ensure that the discharge hose is uncoiled properly, and that there are no kinks that could obstruct fluid flow.
- Check the air regulator bowl and air filter for debris such as water, oil, or rust particles. Clean by unthreading the air regulator bowl from the air regulator.
- Check the strainer for debris or other blockages, and clean as needed. Replace strainer if damaged. Strainer must be used.
- If air passes through the pump without cycling, the pump needs to be replaced.
- Check for proper air pressure on the air gauge. The air regulator is factory set at 50 psi (3.4 bar). Operating range is 40 to 80 PSI (3 to 5 bar) with 2 CFM (56.6 l/min).
- If the unit operates at a reduced pressure:
 - Check the air compressor supplying the unit. If the pressure is less than 40 psi, turn the unit off until the compressor can catch up.
 - If the air supply is 50 psi (3.4 bar) or above, check the air gauge, which should read near 50 psi (3.4 bar). If the air gauge reads more or less than 50 psi (3.4 bar), adjust the pressure by turning the knob on the top of the air regulator.

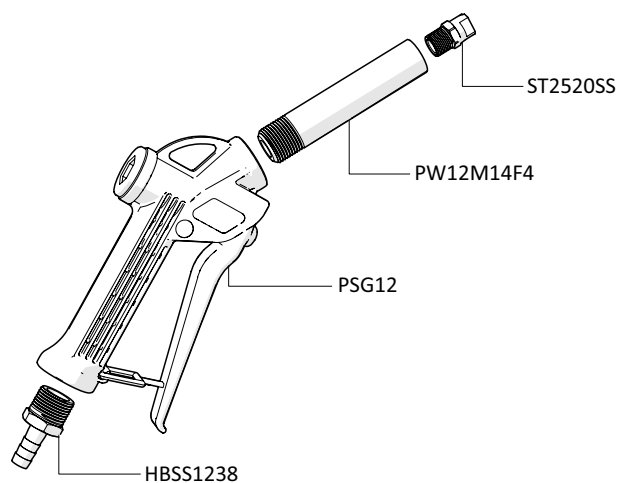
READ ALL INSTRUCTIONS BEFORE OPERATING EQUIPMENT

TANK ASSEMBLY

ITEM NUMBER: TNKA-30N-BK

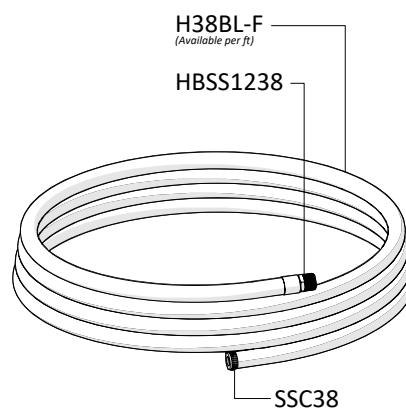


SPRAY GUN ASSEMBLY



DISCHARGE HOSE ASSEMBLY

ITEM NUMBER: HA38BL-30



READ ALL INSTRUCTIONS BEFORE OPERATING EQUIPMENT

PLATE ASSEMBLY

Plate - Inside View

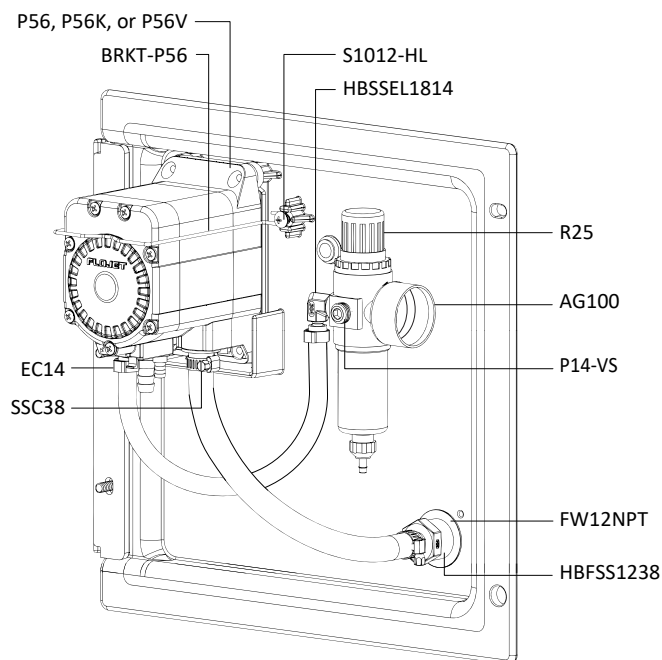
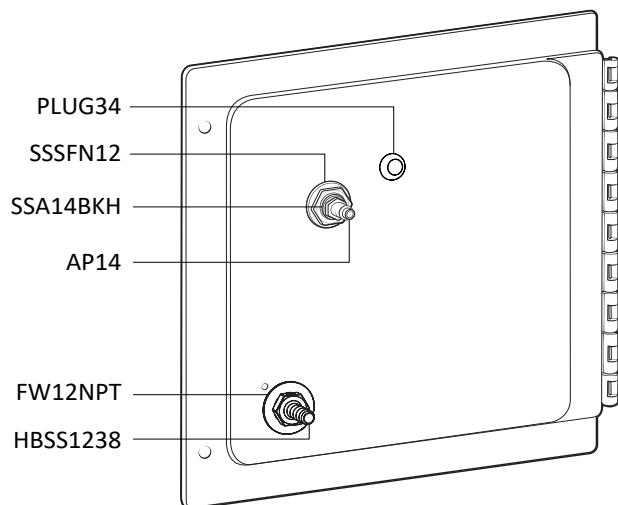


Plate - Back View

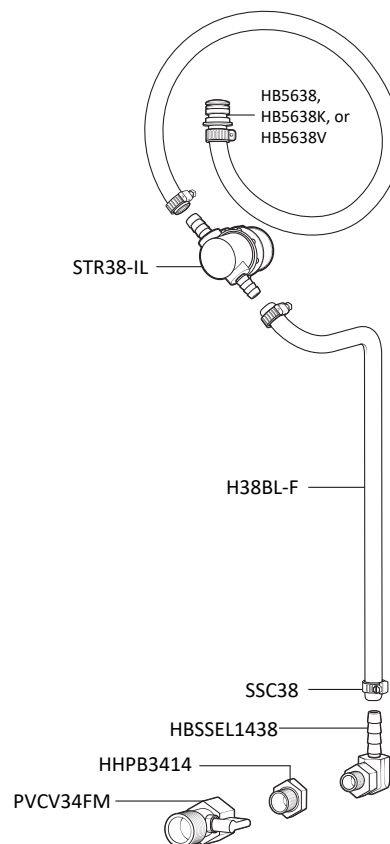


SUCTION ASSEMBLY

ITEM NUMBER (Santoprene pump): SCTNA-PF

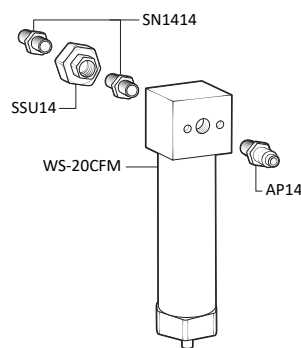
ITEM NUMBER (Kalrez pump): SCTNA-PFK

ITEM NUMBER (Viton pump): SCTNA-PFV

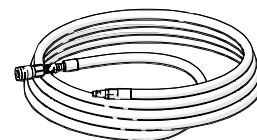


OPTIONAL COMPONENTS

WATER SEPARATOR ASSEMBLY ITEM NUMBER: WSA-20CFM



30 ft (9 m) AIR HOSE ASSEMBLY ITEM NUMBER: AH30



READ ALL INSTRUCTIONS BEFORE OPERATING EQUIPMENT

ITEM NUMBER	DESCRIPTION		
AG100	AIR GAUGE - ½ IN. NPT - 100 PSI DRY MODEL	P56	PUMP WITH SANTOPRENE SEALS - INCLUDES HOSE BARBS, AIR FITTING, AND EXHAUST BARB
AH30	30 FT AIR HOSE W/ QUICK CONNECT FITTINGS	P56K	PUMP WITH KALREZ SEALS - INCLUDES HOSE BARBS, AIR FITTING, AND EXHAUST BARB
AP14	AIR FITTING ¼ MPT X PLUG-NICKEL-PLATED BRASS	P56V	PUMP WITH VITON SEALS - INCLUDES HOSE BARBS, AIR FITTING, AND EXHAUST BARB
AXL1812	AXLE - STAINLESS - 0.625 DIA. X 18.5 IN.	HB5638	HOSE BARB FOR P56 PUMP - EPDM O-RING
B142012-VS	¼-20 X ½ IN. BOLT-STAINLESS-TRUSS HEAD PHILLIPS-VIBRASEAL	HB5638K	HOSE BARB FOR P56K PUMP - KALREZ O-RING
B142058-VS	¼-20 X ¾ IN. BOLT-STAINLESS-TRUSS HEAD PHILLIPS-VIBRASEAL	HB5638V	HOSE BARB FOR P56V PUMP - VITON O-RING
BPTNA	BACK PLATE THUMB NUT ASSEMBLY - INCLUDES BOLT, THUMB NUT, AND TETHER	PLPF	PORTABLE FOAMER BACK PLATE W/ HINGE AND HOLES
BST1420118-VS	¼-20 X 1 ½ IN. SET BOLT - STAINLESS - VIBRASEAL	PLPF-PIN	302 STAINLESS PORTABLE PLATE HINGE PIN
TN1420	¼-20 THUMB NUT - BRASS INSERT - ASSEMBLED WITH TETHER	PLSS-AXL	AXLE PLATE - STAINLESS - 2.5 IN. X 1 IN. - 2 HOLES
BRKT-P56	PUMP BRACKET- STAINLESS STEEL	PLUG34	TUBING PLUG ¼ (FITS ⅜ HOLE)
COT	COTTER PIN-STAINLESS-⅜ IN. X 1 IN.	PSG12	ASSEMBLY WITH O-RINGS INCLUDED/1/2IN POLY SPRAY GUN W/ GRAY HNDL. & 316SS
CST5SS	SWIVEL CASTER - STAINLESS - 5 IN. CLEARANCE - 4 IN. WHEEL	PSGORV	PSG12 VITON O RING
CST5SS-L	SWIVEL CASTER - STAINLESS - 5 IN. CLEARANCE - 4 IN. WHEEL - WITH LOCK	PVCV34FM	PVC VALVE ¾ IN. FPT X ¾ IN. MPT
LDA-7BK	LID ASSEMBLY - INCLUDES 7 IN. BLACK LID, LID FLANGE, HINGE PIN, AND MOUNTING SCREWS	PW12M14F4	½ IN. NPT AND ¼ IN. FNPT WAND - BLACK UHMW - 4 IN. LONG
LD-7BK-LID	7 INCH FILL CAP POLYPRO BLACK	R25	AIR REGULATOR - TWO ¼ IN. FPT PORTS - TWO ¼ IN. FPT PORTS - INCLUDES FILTER AND BOWL
LD-7BK-FLNG	7 INCH TANK LID FLANGE POLYPRO	AFR25	AIR FILTER FOR R25
LD-PIN	HINGE PIN FOR 7 INCH FILL CAP AND FLANGE	ABR25	METAL AIR BOWL FOR R25
DPA	DRAIN PLUG ASSEMBLY - INCLUDES GASKET	S1012-HL	10-16 X ½ IN. SCREW-STAINLESS-HI LO
EC14	OETIKER EAR CLAMP FOR ¼ IN. HOSE	SN1212	½ IN. HEX STAINLESS STEEL NIPPLE
F38SS	STAINLESS CRIMP FERRULE FOR ¾ IN. HOSE	SN1414	STAINLESS HEX NIPPLE ¼ MPT X ¼ MPT
FW58	FLAT WASHER FOR ¾ IN. PIPE - STAINLESS - 0.687 ID X 1.5 OD X 0.07 THK	SSA14BKH	BULKHEAD ADAPTER - STAINLESS - ¼ NPT X ¼ NPSM
FW12NPT	FLAT WASHER FOR ½ IN NPT - STAINLESS .88 IN ID X 1.5 IN. OD X 0.05 IN. THK	SSC12	STAINLESS SCREW BAND CLAMP FOR ½ IN. HOSE
H12BL-F	½ INCH BLUE HOSE-HYBRID TPE-AVAILABLE PER FT.	SSC38	STAINLESS SCREW BAND CLAMP FOR ¾ IN. HOSE
H14BL-F	¾ INCH BLUE HOSE-HYBRID TPE-AVAILABLE PER FT.	SSSFN12	SERRATED FLANGE NUT - STAINLESS - ½ IN.
H38BL-F	¾ INCH BLUE HOSE-HYBRID TPE-AVAILABLE PER FT.	SSU14	STAINLESS STEEL UNION- ¼ INCH FP
HBEL1212	HOSE BARB ELBOW ½ IN. MPT X ½ IN. BARB	ST2520SS	SPRAY TIP-25 DEGREE FAN-2.0 GPM-STAINLESS-¼ MPT
HBFS1238	STAINLESS STEEL HOSE BARB ½ FPT X ¾ BARB	STR38-IL	IN-LINE STRAINER - ¾ BARB - EPDM GASKET - 20 MESH SS - BLACK BOWL
HBSEL1438	STAINLESS HOSE BARB ¼ MPT X ¾ BARB ELBOW	TNK-30N	30 GALLON NATURAL TANK
HBSEL1814	STAINLESS HOSE BARB ¼ MPT X ¾ BARB ELBOW	W10	NONMARKING WHEEL FOR PORTABLE UNITS
HHPB3414	HEX HEAD POLY BUSHING ¾ MPT X ¼ FPT	WS-20CFM	WATER SEPARATOR - 20 CFM - ¼ IN. FPT PORTS
P14-VS	COUNTERSUNK PLUG-HEXAGON ¼ WITH VIBRASEAL PATCH		