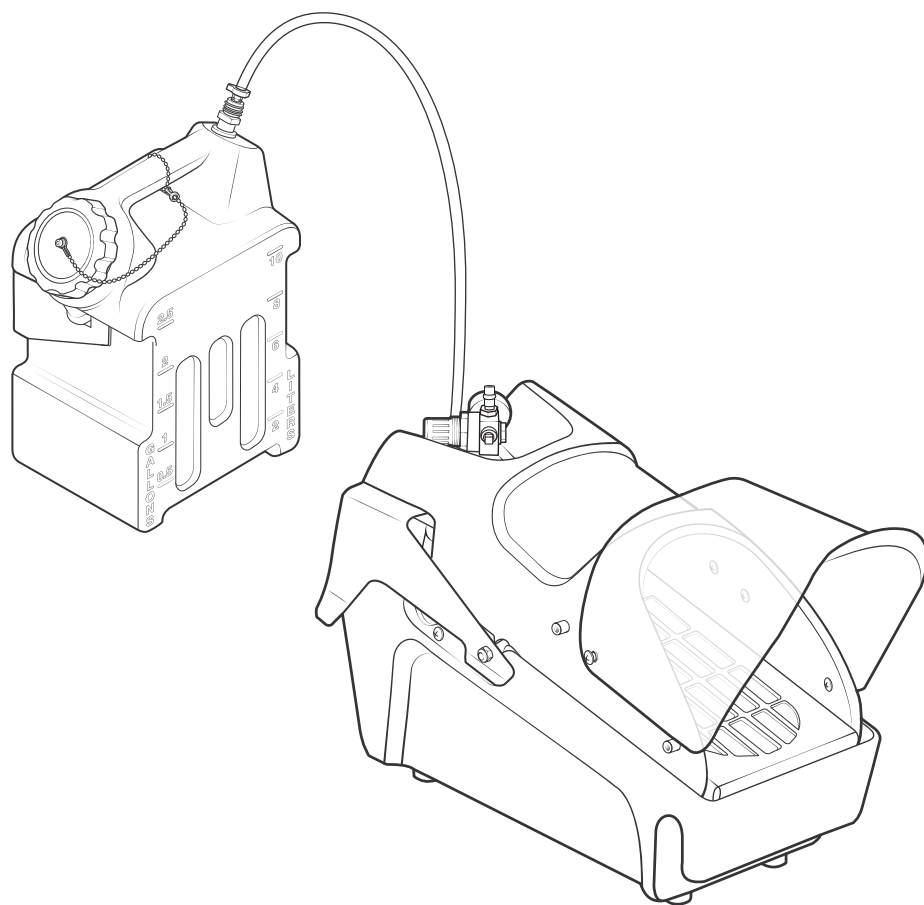


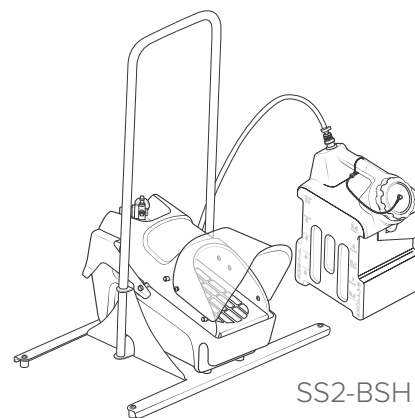
Air Powered Footwear Sanitizing Unit

Service Manual

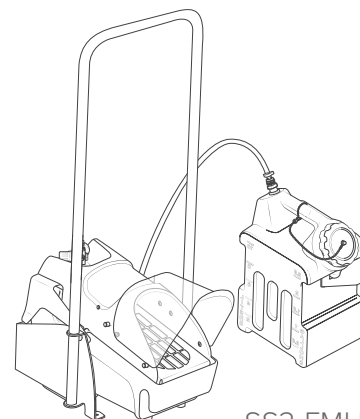
SS2



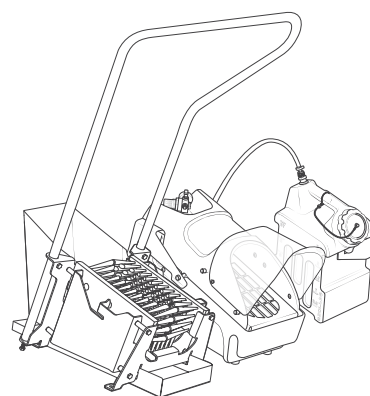
SS2



SS2-BSH



SS2-FMH



SS2-MBS

READ ALL INSTRUCTIONS BEFORE USING OR SERVICING THIS UNIT. KEEP THIS MANUAL IN A LOCATION THAT IS READILY AVAILABLE TO USERS AND SERVICE TECHNICIANS.

English (Original Instructions)



Scan this code for
service manual



Safety

WARNING

PEOPLE OR OBJECTS CAN BE HURT OR DAMAGED IF THIS UNIT IS NOT USED CORRECTLY!



Failure to read all the instructions before operating the unit may result in personal injury or death from the improper use or the chemical solution. Anyone handling, operating or using the unit must read and understand the instructions in the manual. The buyer assumes all responsibility for safety and proper use in accordance with the instructions.



Using or servicing the unit without appropriate personal protective equipment (PPE) may result in serious injury such as burns, rashes, eye, throat or lung damage and death. Always wear PPE as indicated in the Safety Data Sheet (SDS) when using or servicing the unit. Protect eyes, skin, and lungs against drifting spray.



To prevent chemical spray to face and eyes, ensure full foot insertion into unit and press down with heel. Wear splash goggles as directed by chemical manufacturer, SDS, or OSHA.

This unit is for use with fully protective footwear only. This unit is designed to help sanitize footwear at transition zones with a focus on reduced moisture. This unit is intended to sanitize shoe soles and not intended for any other use.



Chemical solutions may pose a health risk and death if they contact the skin or eyes, are inhaled or swallowed. Always read and follow all chemical safety precautions and handling instructions provided by the chemical manufacturer and the SDS associated with the chemical solution before using the unit.



Pressure within the equipment may cause an unexpected release of the chemical solution and cause serious injury such as burns, rashes, eye damage, throat or lung damage and death. Always disconnect the air line from the unit before performing any maintenance, and clean the unit after each use.

Using the unit with fluid temperatures above 100°F (37.8°C) may result in scalding, burns, serious injury or death. DO NOT use a solution with a temperature above 100°F (37.8°C).

Operating the unit when damaged or leaking may result in exposure to chemical solutions, serious injury or death. Never use the unit if it is damaged or leaking.



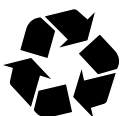
Use of hydrocarbons and flammable products may result in explosions, fire and serious injury or death. Never use hydrocarbons or flammable products with the unit.

NOTICE

Servicing or modifying this unit with parts not listed in this manual may cause the unit to operate improperly. Do not use unauthorized parts when servicing the unit.

This unit is for use with fully protective footwear only.

PROTECT THE ENVIRONMENT



Please dispose of packaging materials, old machine components, and hazardous fluids in an environmentally safe way according to local waste disposal regulations

Service Guide

WARNING

Performing any maintenance with the unit pressurized may result in serious injury. Before conducting any maintenance, always ensure the unit has been depressurized by disconnecting the air line on the unit. Servicing or modifying this unit with parts not listed in this manual may cause the unit to operate improperly. Do not use unauthorized parts when servicing the unit. Remember to reconnect air line, and re-prime the unit according to the priming instructions in the operation manual after performing any maintenance.

Maintaining Your Unit

To keep your unit operating properly, perform the following daily maintenance procedures:

For SS2, SS2-BSH, SS2-FMH, and SS2-MBS units:

- Inspect the stainless foot grate for debris and clean when necessary.
- Collection basin should be emptied and cleaned each time the chemical supply container is changed or refilled. See **Collection basin cleaning instructions** for more information.

Note: During heavy use, over-spray can fill up basin. Be mindful of fluid levels not reaching above manifold, this can cause the unit to operate improperly.

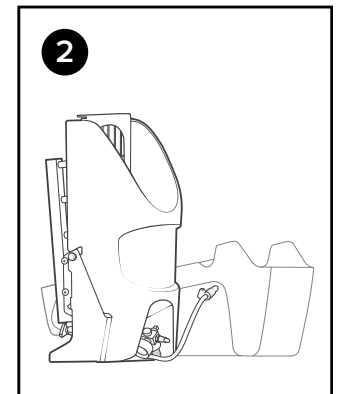
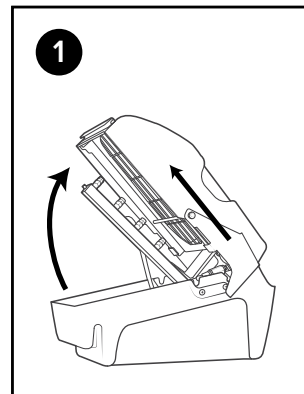
- Verify nozzle assembly is free of any debris or blockage. Rinse with low pressure water if necessary.
- Check suction line and strainer for debris. Clean as needed.
- Inspect all tubing for leaks or excessive wear. Make sure all hose clamps and push fittings are in good condition and properly secured.

For SS2-MBS units only:

- Remove brushes by lifting them out from the brush bracket. Remove debris and clean. Brushes should be replaced every 6 months depending on wear.
- Slide out debris tray. Empty debris and wipe clean.
- Base assembly of unit is fully stainless and can be cleaned in place by method suitable for stainless steel.

Collection basin cleaning instructions:

1. Lift the shroud upwards to raise the top half of the unit. Then, slide the top half away from the bracket to detach it from the housing.
2. Place the top half of the unit to the side.
Note: Stand the top half of the unit on short end. Setting the unit down in other position may cause damage to nozzle assembly.
3. Empty and clean the collection basin.
4. Re-insert the top half of the unit by repeating step 1 in reverse order.



Servicing Your Unit

Most repairs on the unit can be performed with the following tools:

- Crescent wrench (2x)
- $\frac{7}{16}$ in. (11 mm) socket wrench
- $\frac{9}{16}$ in. (14 mm) socket wrench
- #2 Phillips head screwdriver
- Thread seal tape
- Hose cutters
- Knife

Troubleshooting Your Unit

If your unit is not operating properly, try using these troubleshooting tips:

Issue	Solution
If the unit does not spray	<ul style="list-style-type: none"> • Check valve stem and roller cam for proper movement and compression. • If the pump is cycling, but unit does not spray, the pump may be air locked. • Verify pump springs are not worn or broken. • Check the suction line and strainer for debris and clean if necessary. • Verify the jug the unit is pulling from is vented, and filled appropriately. • Ensure nothing is blocking or impeding the full motion of the mechanism.
If the unit sprays irregularly	<ul style="list-style-type: none"> • Verify that the unit is connected to an appropriate compressed air source. Unit requires 40 psi (2.8 bar) with 1 CFM (28.3 l/min) to operate. To maximize unit lifespan and performance, compressed air should be clean and dry. Note: If the air source has a high moisture content, you may wish to install a water separator before the unit. • Verify the pump is cycling regularly. Pump can be disassembled and the o-rings can be re-lubricated with a silicone-based lube. • Ensure the springs in the pump are not worn or broken. • Check the spray tips and make sure they are not clogged or blocked by debris. The spray tips may be removed and cleaned if necessary. • Verify that the jug the unit is pulling from is vented, and filled appropriately.
If the unit does not hold a prime	<ul style="list-style-type: none"> • Check hose clamps and ensure that barbs are secure. • Check all tubing connections and verify none are loose, broken, or leaking.

Shroud and Housing Assemblies

SHRA-SS2:

Shroud assembly for SS2 - includes shroud with spray guard, and mounting hardware

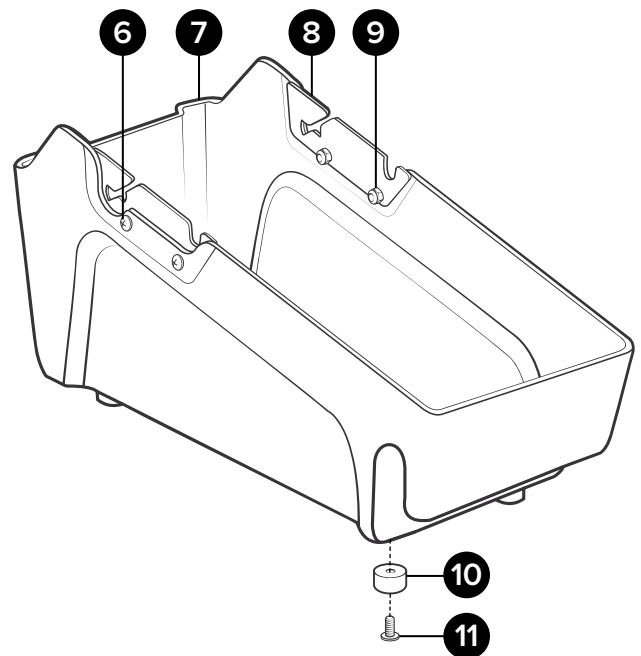
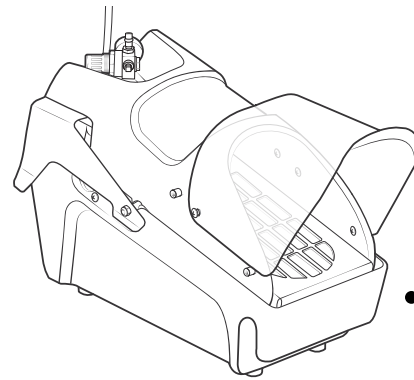
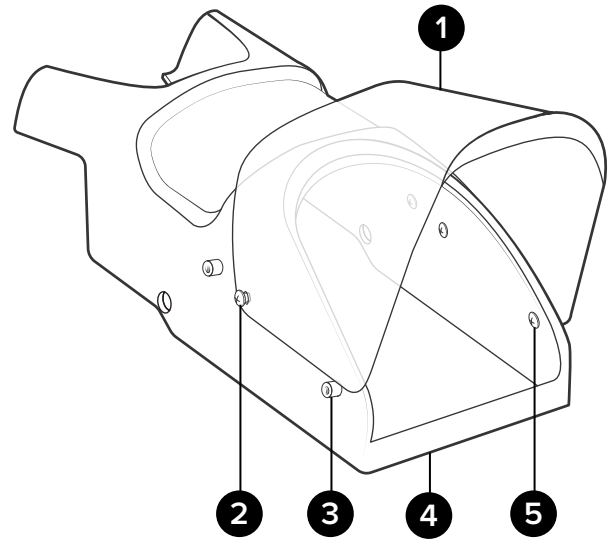
Item number	Description
1 SPGRD-SS2	Spray guard for SS2
2 BPB142038	¼-20 x ¾ in. binding post barrel - stainless - truss head Phillips
3 SO142012	¼-20 x ½ in. threaded standoff - stainless
4 SHR-SS2	Shroud - SS2 - drilled out - includes warning and brand label
5 B142012-VS	¼-20 x ½ in. bolt - stainless - truss head Phillips - Vibra-Seal

HSGA-SS2:

Housing assembly for SS2 - includes mechanism mounting plate, rubber feet, and mounting hardware

Item number	Description
6 B142058-VS	¼-20 x 5/8 in. bolt - stainless - truss head Phillips - Vibra-Seal
7 HSG-SS2	Housing for SS2 - includes warning label
8 MPL-SS2	Mount plate for SS2 - stainless
9 LN1420	Locknut - ¼-20 - stainless - nylon insert
10 RFT12	Rubber foot - ½ in. tall - includes internal washer
11 B142058-VS	¼-20 x 5/8 in. bolt - stainless - truss head Phillips - Vibra-Seal

SHRA-SS2



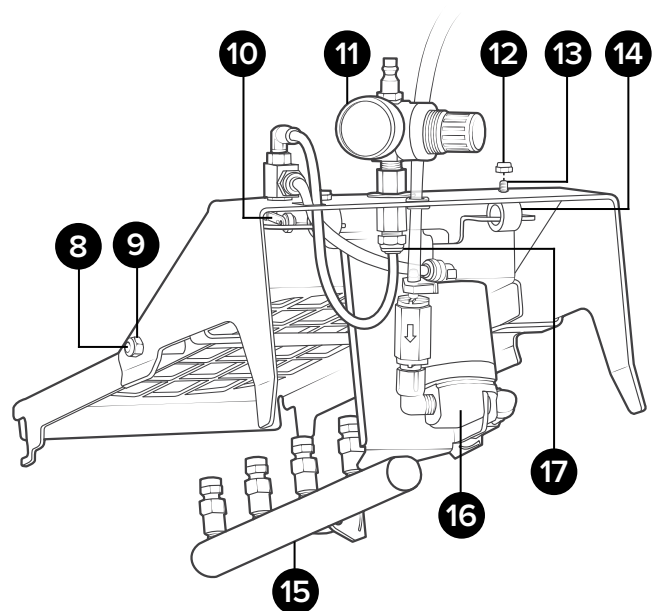
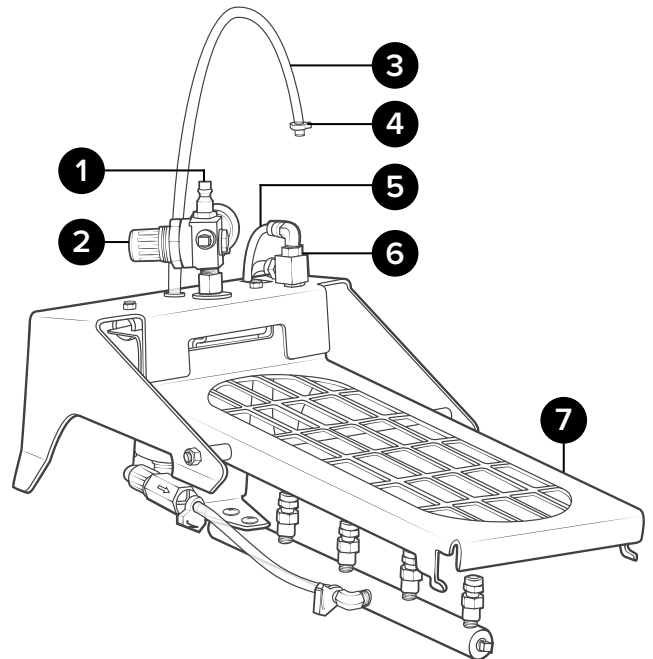
HSGA-SS2

Mechanism Assembly

MCHA-SS2:

Mechanism assembly for SS2 - includes fluid pump, mounting hardware, and air connection

Item number	Description
1 AP14	Air fitting ¼ mpt x plug - nickel-plated brass
2 R16	Air regulator - ¼ FPT two port ⅛ FPT two port - no bowl/filter
3 H14CL-PV	¼ in. id ⅜ in. od clear hose - PVC - available per ft.
4 CLMPTB38-ADJ	Clamp for ¼ in. od tube - plastic - adjustable
5 TB14BL-PU	¼ in. od blue tube - polyurethane - available per ft.
6 VLVA-3W2P-SS2	Valve assembly - 3 way 2 position - SS2 - includes tooth washers and nuts
7 GRT-SS2	Grate - SS2 - stainless steel
8 TRD5161114	⅝ in. od x 11 ¼ in. long threaded rod - ⅝-18 end threads - stainless
9 LN516	Locknut - ⅝-18 - stainless - nylon insert
10 ACVB-3W2P-RCA	Air control valve - nickel-plated brass - 3 way 2 position - roller cam actuator
11 AG100	Air gauge - ⅛ in. NPT - 100 psi dry model
12 LN1032	Locknut - 10-32 - stainless - nylon insert
13 B103212-PH	10-32 x ½ in. bolt - stainless - pan head Phillips
14 RSPG1	Radial spring - 1 in. dia. - rubber
15 MNA-SS2	Manifold assembly - SS2 - SS check valves and spray tips includes fitting and plug
16 PMPA-FLD-SS2	Pump assembly - SS2 - fluid - includes spring and seals
17 QF14P	Quick fit - ¼ MPT x ¼ od tube - polypropylene

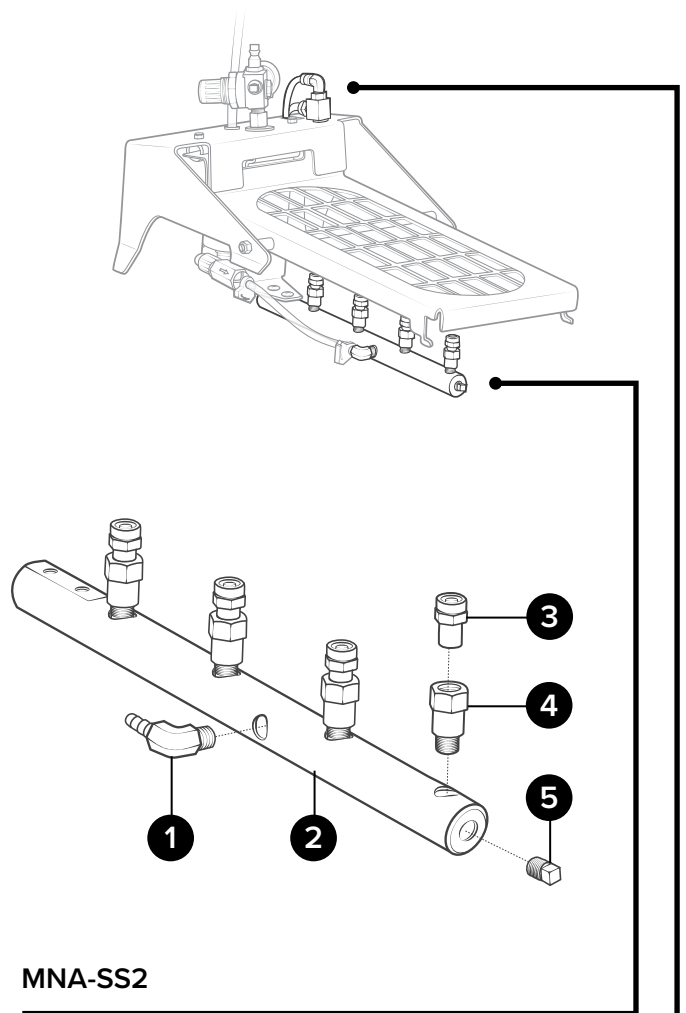


Mechanism Sub-assemblies

MNA-SS2:

Manifold assembly for SS2 - includes SS check valves, spray tips, fitting, and plug

Item number	Description	
1	HBSEL1814	Stainless hose barb 1/8 MPT x 1/4 barb elbow
2	MN-SS2	Manifold - SS2 - 1/8 in. NPT - 6 ports PVC
3	FCN12016	Full cone nozzle - PVDF - 120 deg 16 GPH
4	CVSS18MF	Check valve - stainless steel - 1/8 MPT x 1/8 FPT - 1 lb. stainless steel spring - Viton seals
5	P18	Plug 1/8 MPT hex head 304 SS

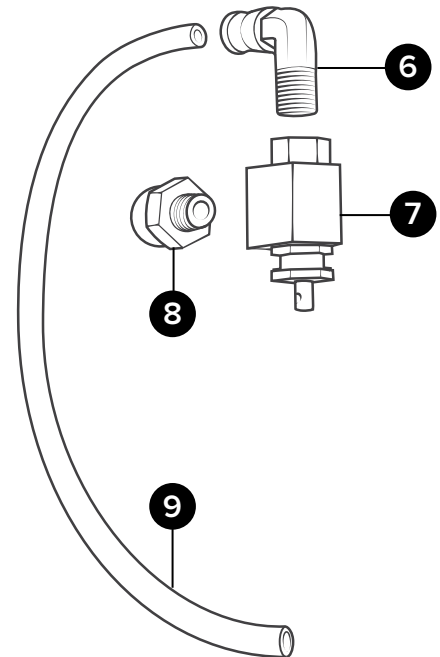


MNA-SS2

VLVA-3W2P-SS2:

Valve assembly for SS2 - 3 way 2 position - includes tooth washers and nuts

Item number	Description	
6	QFEL18	Fixed elbow 1/4 in. tube x 1/8 in. MPT brass
7	ACVB-3W2P	Air control valve - nickel-plated brass - 3 way 2 position - valve only - does not include tooth washers and nuts
8	QF1814	Quick fit - 1/8 MPT x 1/4 od tube - polypropylene
9	TB14BL-PU	1/4 in. od blue tube - polyurethane available per ft.



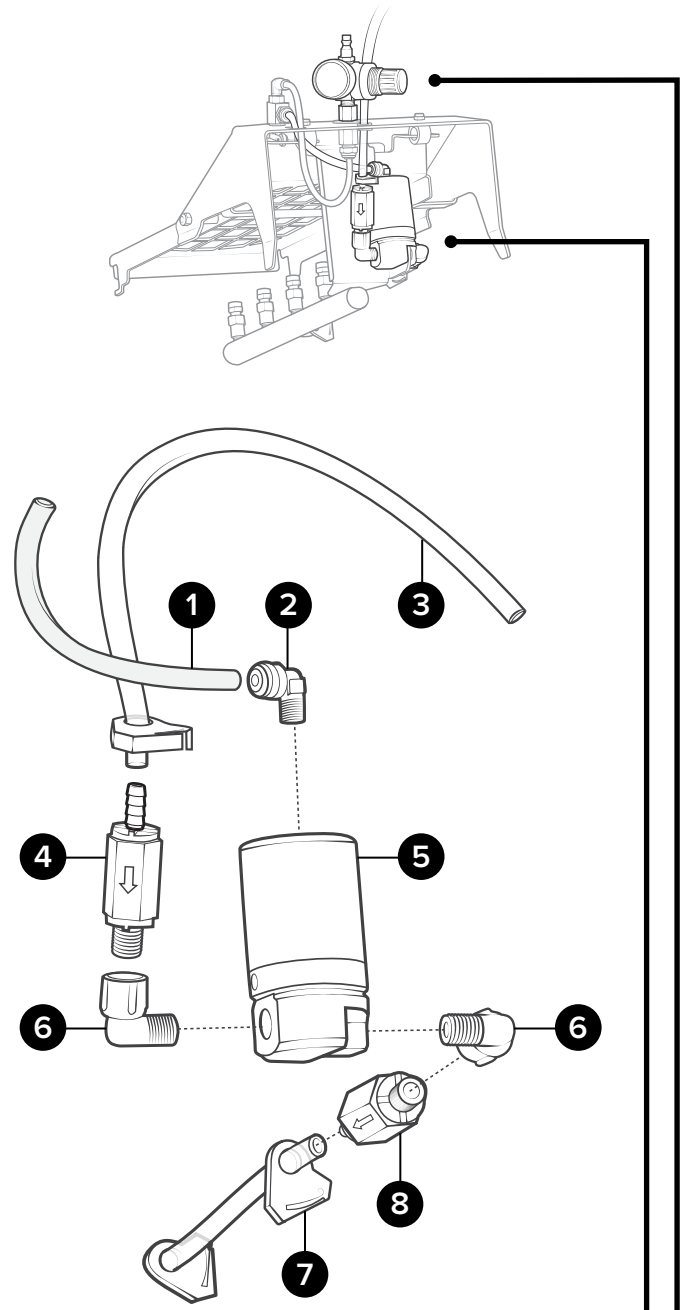
VLVA-3W2P-SS2

Mechanism Sub-assemblies

PMPA-FLD-SS2-WF:

Pump assembly for SS2 - fluid - includes fittings, tubing, and check valves

Item number	Description
1	TB14BL-PU ¼ in. od blue tube - polyurethane available per ft.
2	QFEL1814 Fixed elbow ¼ in. MPT x ¼ in. tube - polypropylene
3	H14CL-PV ¼ in. id ¾ in. od clear hose - PVC - available per ft.
4	CV14HB14M Check valve - PVC - ¼ barb x ¼ MNPT - 302SS spring - Viton seals - air flow right
5	PMPA-FLD-SS2 Pump assembly - SS2 - fluid - includes spring and seals
6	EL14M14F ¼ FPT x ¼ MPT - polypro elbow
7	CLMPTB38-ADJ Clamp for ¼ in. od tube - plastic adjustable
8	CV14M14HB Check valve - PVC - ¼ MNPT x ¼ barb - 302SS spring - Viton seals - air flow left

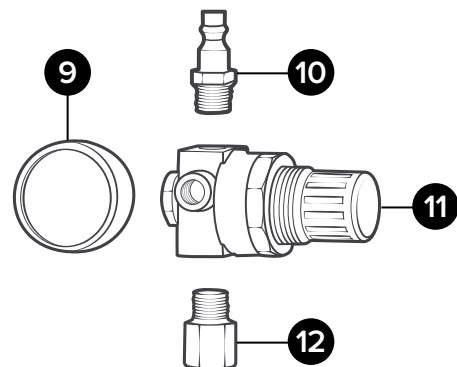


RGA-R16-SS2:

Regulator assembly - includes regulator with 2x ¼ in. and ⅛ in NPT ports, air gauge, and ⅛ in. NPT plug

Item number	Description
9	AG100 Air gauge - ⅛ in. NPT - 100 psi dry model
10	AP14 Air fitting ¼ mpt x plug - nickel-plated brass
11	R16 Air regulator - ¼ FPT two port ⅛ FPT two port - no bowl/filter
12	SSA14 Stainless adaptor ¼ MPT x ¼ FPT

PMPA-FLD-SS2-WF



RGA-R16-SS2

Base With Handle

SS2-BSH

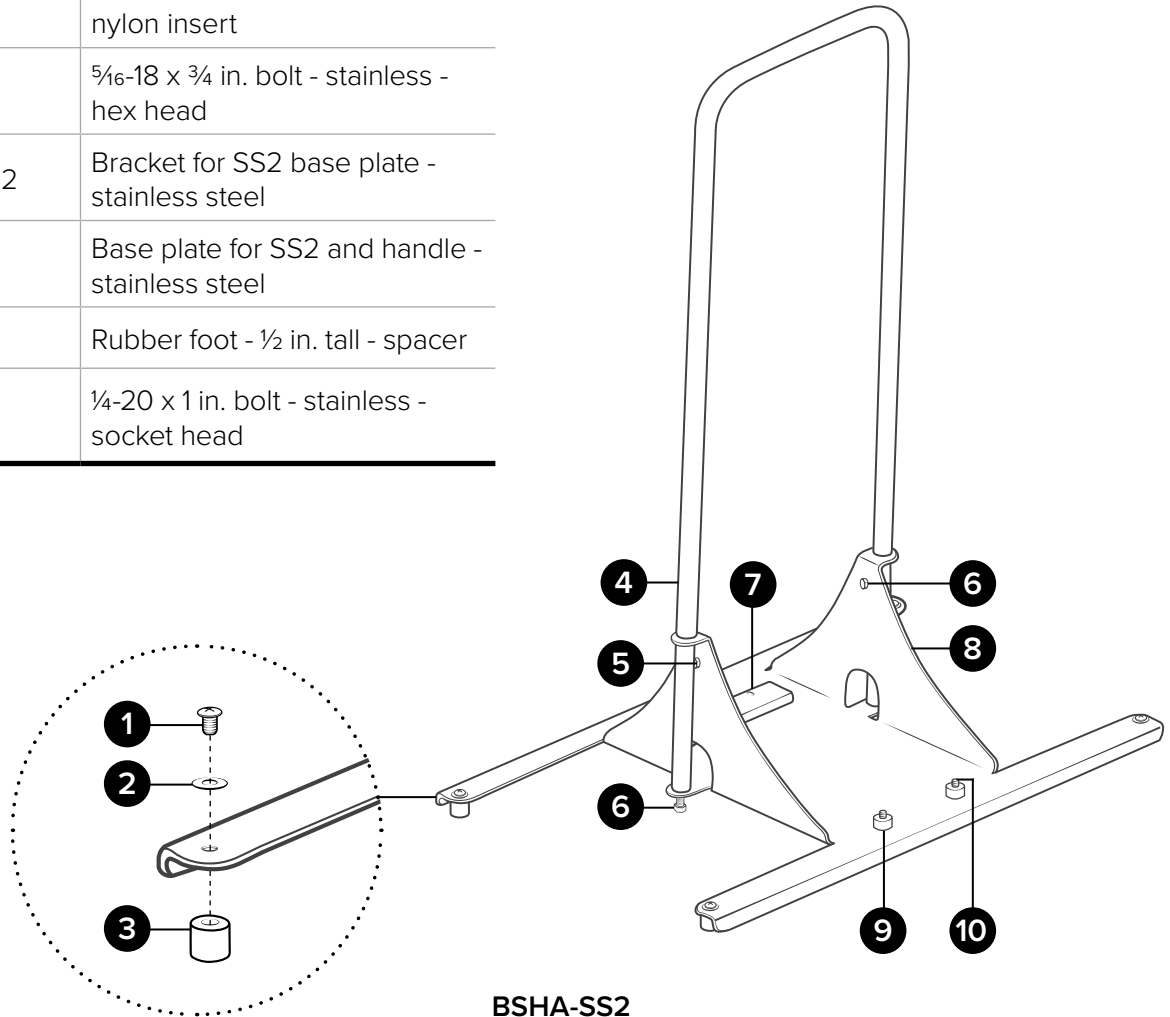
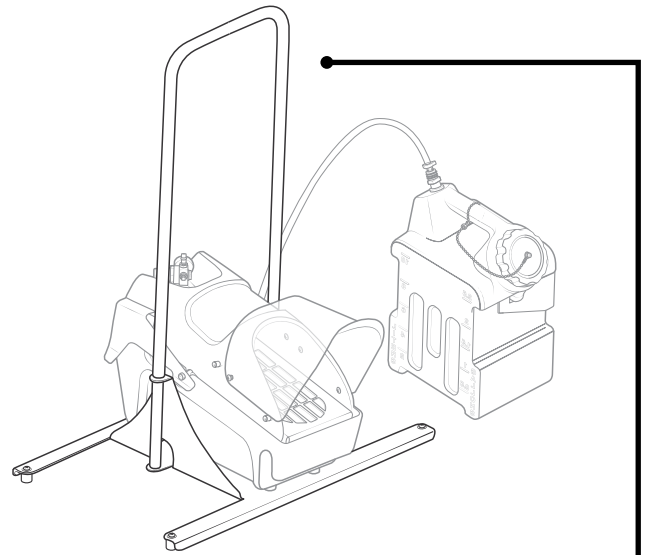
SS2-BSH:

Footwear sanitizer - SS2 and base with handle - includes 2.5 gal chemical jug with suction and SS rack

BSHA-SS2:

Base and handle assembly for SS2 - Includes floor base plate, mount plate adapter, handle, rubber feet, and hardware

Item number	Description
1	B5161812-PH-VS 5/16-18 x 1/2 in. bolt - stainless pan head Phillips - Vibra-Seal
2	FW3816 Flat washer for 3/8-16 bolt - stainless - 0.41 in. id x 0.88 in. od x 0.05 in. thk
3	RFT1-516 Rubber foot - 1 in. tall - 5/16-18 threaded brass insert
4	HNDL-FS Handle bar - footwear sanitizer
5	LN516 Locknut - 5/16-18 - stainless - nylon insert
6	B5161834-HH 5/16-18 x 3/4 in. bolt - stainless - hex head
7	BRKT-BSPL-SS2 Bracket for SS2 base plate - stainless steel
8	BSHPL-SS2 Base plate for SS2 and handle - stainless steel
9	RFT12-SPC Rubber foot - 1/2 in. tall - spacer
10	B14201-SH 1/4-20 x 1 in. bolt - stainless - socket head



BSHA-SS2

Floor Mount Base With Handle

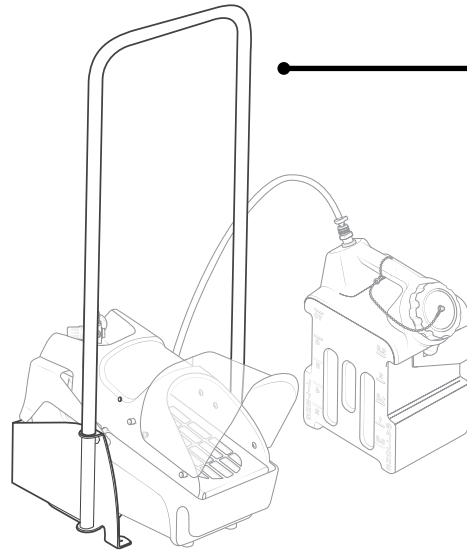
SS2-FMH

SS2-FMH:

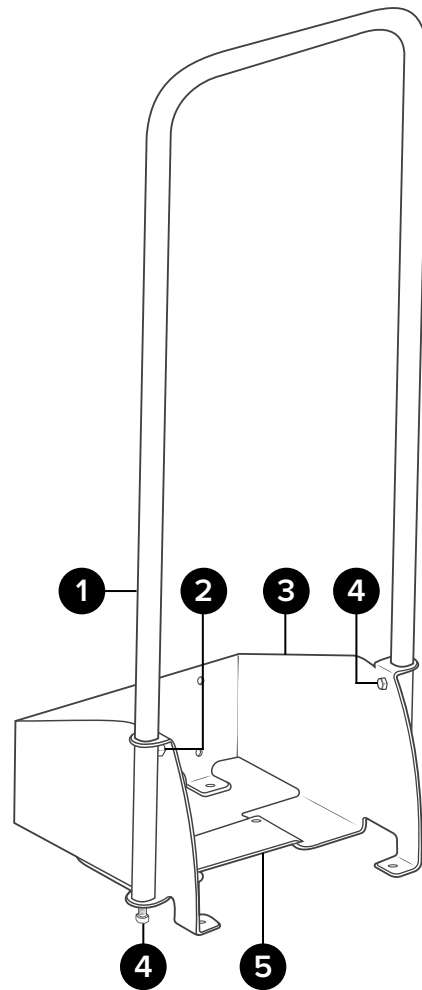
Footwear sanitizer - SS2 and base with handle - includes 2.5 gal chemical jug with suction and SS rack

FMHA-SS2:

Floor mount and handle assembly for SS2 - includes floor mount with handle bracket, handle, mount plate adapter, and mounting hardware



Item number	Description	
1	HNDL-FS	Handle bar - footwear sanitizer
2	LN516	Locknut - 5/16-18 - stainless - nylon insert
3	FMHPL-SS2	Floor mount plate for SS2 and handle - stainless steel
4	B5161834-HH	5/16-18 x 3/4 in. bolt - stainless - hex head
5	BRKT-FMPL-SS2	Bracket for SS2 floor mount plate - stainless steel



FMHA-SS2

Manual Boot Scrubber

SS2-MBS

SS2-MBS:

Footwear sanitizer - SS2 - includes floor mount, manual boot scrubber with combo handle, 2.5 gal chemical jug with suction, and SS rack

FMA-SS2:

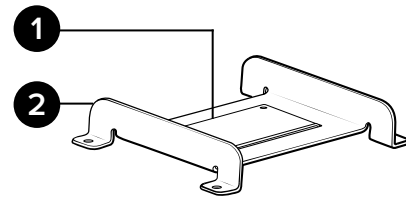
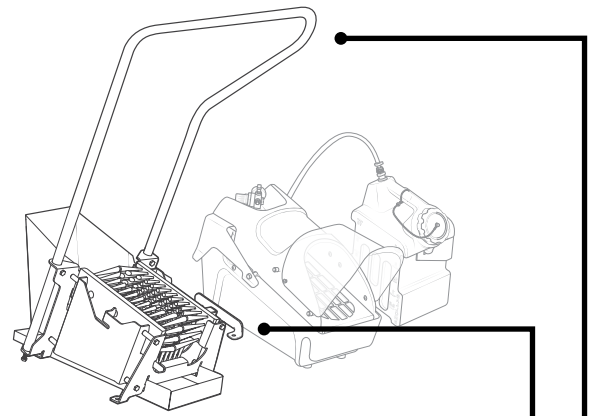
Floor mount assembly for SS2 - includes floor mount bracket and mount plate adapter - no hardware

Item number	Description
1 BRKT-FMPL-SS2	Bracket for SS2 floor mount plate - stainless steel
2 FMPL-SS2	Floor mount plate for SS2 - stainless steel

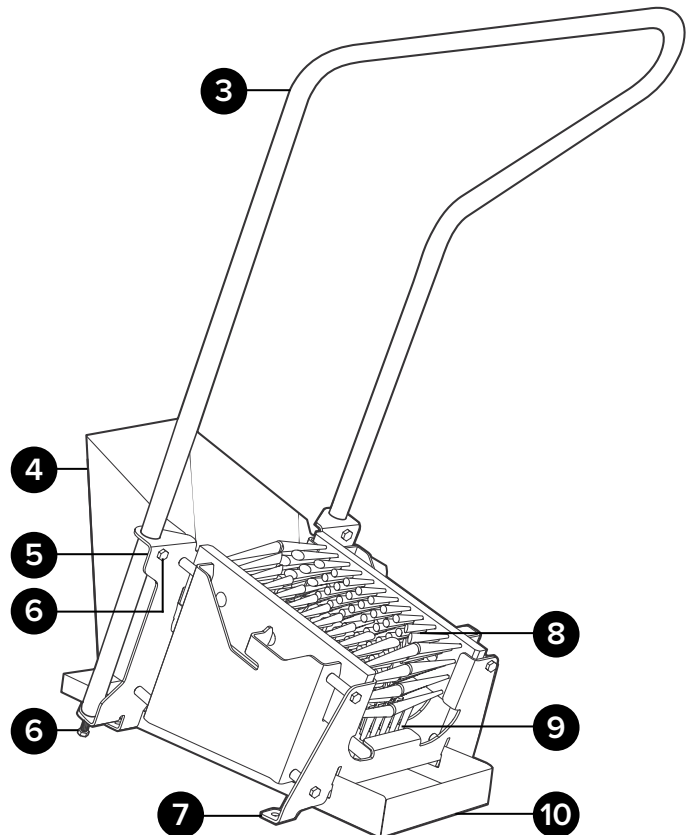
MBS-C:

Manual boot scrubber combo - includes handle

Item number	Description
3 HNDL-FS-C	Handle bar - footwear sole sanitizer and manual boot scrubber combo
4 DBSH	Debris shield - manual boot scrubber - stainless steel
5 LN516	Locknut - 5/16-18 - stainless - nylon insert
6 B5161834-HH	5/16-18 x 3/4 in. bolt - stainless - hex head
7 MBS100-C-BASE	Manual boot scrubber floor mount bracket - footwear sanitizer base - stainless steel
8 BR10S	Block brush for boot scrubber side - polypropylene
9 BR10	Block brush for boot scrubber sole - polypropylene
10 DBTR	Debris tray - manual boot scrubber - stainless steel



FMA-SS2



MBS-C

Jug Assembly

J2.5BKSJ:

2.5 gallon natural jug - includes black cap, suction and rack

JC35B-TAV:

Black 3.5 inch one way vented cap polypropylene - includes EPDM gasket, check valve, and bead chain tether assembly

Item number	Description
1	B103234-SH-VNT 10-32 x 3/4 in. bolt - stainless - socket head - vented
2	JC35B-P Black 3.5 inch cap - polypropylene
3	CHN-JC35 JC35 bead chain tether assembly
4	CV-JC35 EPDM check valve for non locking jug cap
5	JC-G35 Jug cap gasket 3.5 inch cap EPDM

Item number	Description
6	J2.5 2.5 gallon natural jug - jug only

SRPK-J2.5:

Suction valve assembly for 2.5 gallon jugs

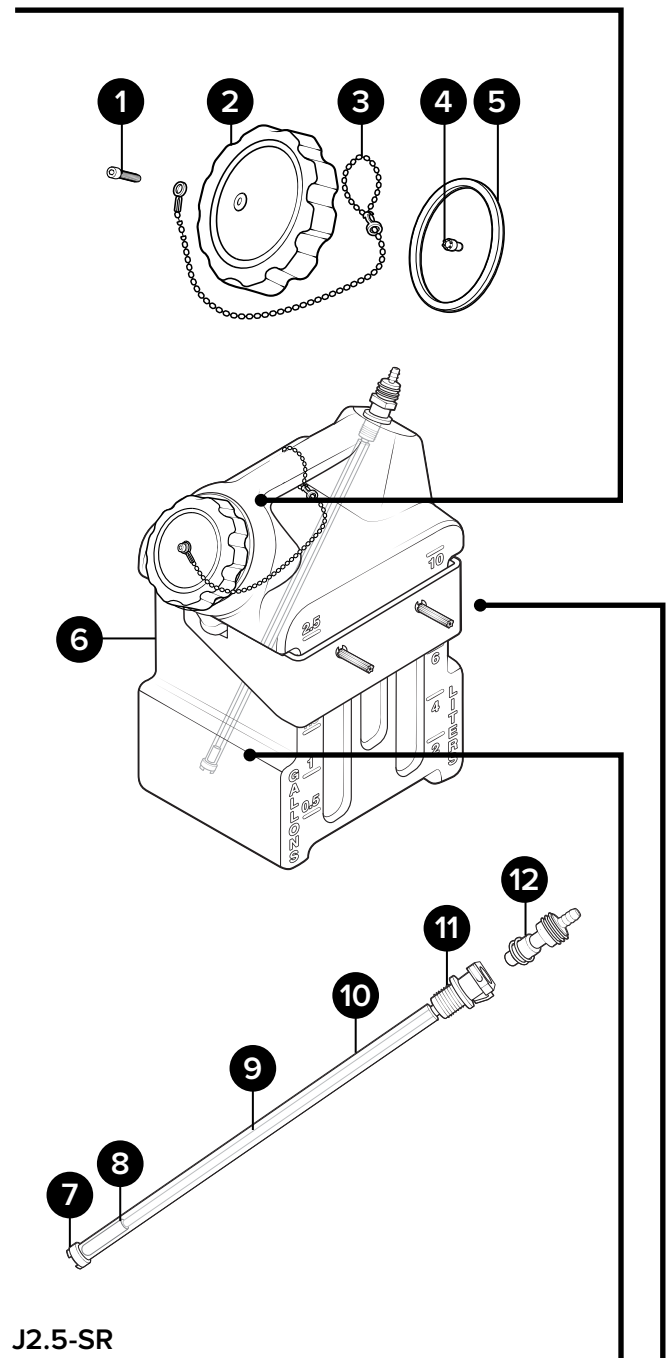
Item number	Description
7	P203CT-FS Foot strainer for the P203CT
8	H14CL-PV 1/4 in. id 3/8 in. od clear hose - PVC - available per ft.
9	TB14N-PE 1/4 in. od natural tube - polyethylene available per ft.
10	H38CL-PV 3/8 in. id 3/8 in. od clear hose - PVC - available per ft.
11	QCPP-M-HAST 3/8 in. panel mount socket - suction 3/8 id x quick connect - Hastelloy spring - 1/16-24 thread
12	QCPP14HB-HAST 1/4 in. in-line hose barb - polypro body - Hastelloy spring

SSJR2:

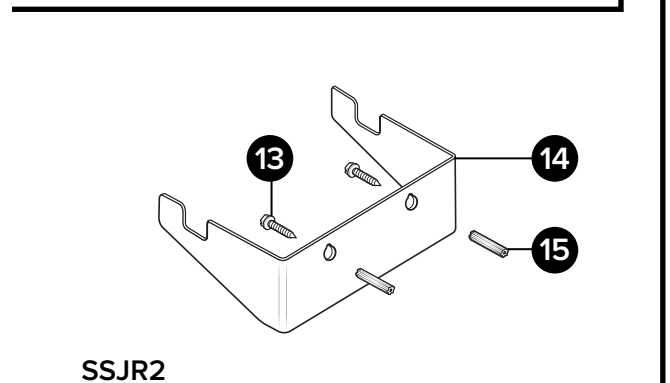
SS rack to mount chemical jug - includes mounting hardware

Item number	Description
13	WMS14 #14 x 1 1/4 in. wall mount screw - stainless hex head slotted
14	SSJR2-P SS rack to mount chemical transport jug
15	WMS14A #14 x 1 1/4 in. wall mount screw anchor - plastic - 5/16 in. drill size

JC35B-TAV



J2.5-SR



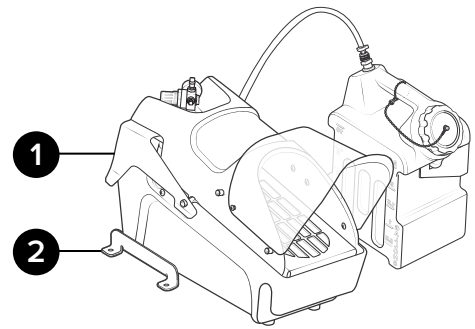
SSJR2

Additional Configurations

SS2-FM:

Footwear sanitizer - SS2 - includes floor mount, 2.5 gal chemical jug with suction, and SS rack

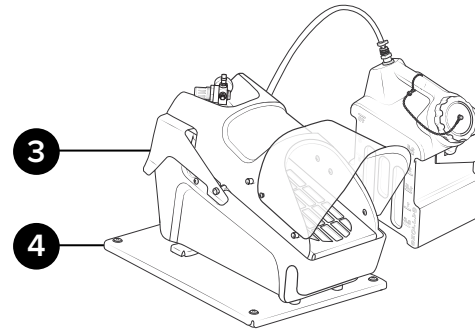
Item number	Description
1 SS2	Footwear sanitizer - includes 2.5 gal chemical jug with suction and SS rack
2 FMA-SS2	Floor mount assembly - SS2 - floor mount bracket and mount plate adapter - no hardware



SS2-BS:

Footwear sanitizer - SS2 and base mount - includes floor mount, 2.5 gal chemical jug with suction, and SS rack

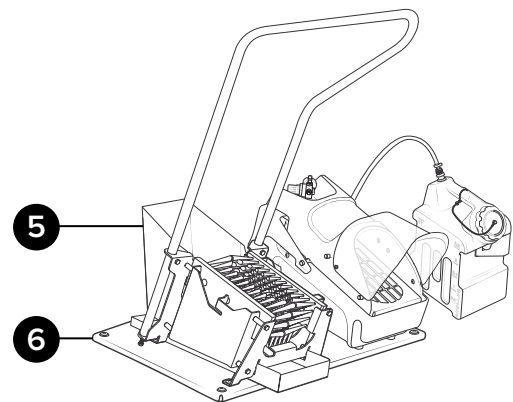
Item number	Description
3 SS2	Footwear sanitizer - includes 2.5 gal chemical jug with suction and SS rack
4 BSA-SS2	Base assembly for SS2 - includes base plate, mount plate adapter, rubber feet, and hardware



SS2-MBS-BS:

Footwear sanitizer - SS2 and manual boot scrubber with combo handle on base mount - includes 2.5 gal chemical jug with suction and SS rack

Item number	Description
5 SS2-MBS	Footwear sanitizer - SS2 - includes floor mount, manual boot scrubber with combo handle, 2.5 gal chemical jug with suction, and SS rack
6 BSA-SS2-MBS	Base assembly for SS2 and manual boot scrubber - includes base plate, mount plate adapter, rubber feet, and hardware

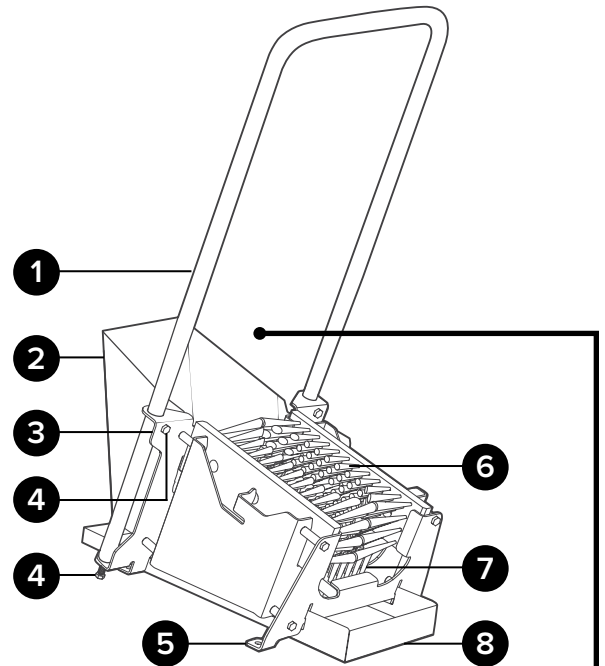


Additional Configurations

MBS:

Manual boot scrubber with handle

Item number	Description
1 HNDL-FS	Handle bar - footwear sanitizer
2 DBSH	Debris shield - manual boot scrubber - stainless steel
3 LN516	Locknut - 5/16-18 - stainless - nylon insert
4 B5161834-HH	5/16-18 x 3/4 in. bolt - stainless - hex head
5 MBS100-C-BASE	Manual boot scrubber floor mount bracket - footwear sanitizer base - stainless steel
6 BR10S	Block brush for boot scrubber side polypropylene
7 BR10	Block brush for boot scrubber sole polypropylene
8 DBTR	Debris tray - manual boot scrubber stainless steel

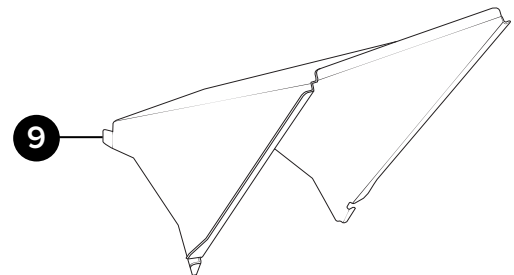


Optional Component

DBSH-EXT:

Debris shield extension for manual boot scrubber - stainless steel

Item number	Description
9 DBSH-EXT	Debris shield extension - manual boot scrubber - stainless steel



DBSH-EXT

**Optional component sold separately*